



**Deep Creek 2014
2014 Canoe Slalom World Championships
McHenry, Maryland, USA**

The Adventure Sports Center International

**Athlete Development Program
September 2-22, 2014**

Hosts & Organization
Deep Creek 2014
Adventure Sports Center International
USA Canoe/Kayak

CONTACT INFORMATION

Todd Copley, Executive Director
tcopley@deepcreek2014.com

Jay Redmond, Event Coordinator
jredmond@deepcreek2014.com

Melissa Anderson, Volunteer Coordinator
manderson@deepcreek2014.com

Bob Campbell, Technical Director
bcampbell@deepcreek2014.com

Karla Westcott, USACK, ICF Liaison
kkwestcott@deepcreek2014.com

Mailing Address: Deep Creek 2014
The Garrett Information Enterprise Center
685 Mosser Road
McHenry, MD 21541
301 387 3700
info@deepcreek2014.com



OFFICIAL LOGO



DEEP CREEK 2014
ICF Canoe Slalom World Championships



DATES

2-9 September 2014 ICF Sponsored
Development Training

10-17 September 2014 Deep Creek 2014
Sponsored Training

18-22 September 2014 Deep Creek 2014
Sponsored Access to the World
Championship Competition



OFFICIAL EVENT WEBSITE

www.deepcreek2014.com

COMPETITION VENUE

Adventure Sports Center International
250 Adventure Sports Way
McHenry, Maryland 21541
301-334-7495

asci@adventuresportscenter.com

<http://adventuresportscenter.com/>



DEVELOPMENT ATHLETE REGISTRATION

Registration site: www.deepcreek2014.com (Registration opens up 30 March 2014)

Registration Deadline: 1 August 2014. ICF will be responsible for registration and communication of nominal and numerical registrations.

INCLUSIONS

- Up to 20 individuals including athletes and coaches
- Lodging beginning 10 September and check out 22 September
- Breakfasts beginning 11 September and ending morning of 22 September
- Lunches beginning 11 September and ending 21 September
- Dinners beginning 10 September and ending 21 September
- One coach pick up from Pittsburgh Airport on arrival day
- One coach return to Pittsburgh Airport on departure day
- Accreditation to competition
- Venue transportation to be decided

Deep Creek 2014 Sponsored Inclusions Valued at \$12,000

ADDITIONS

Cost of additional time on site from 2 September through 9 September

\$7,000 payable to Deep Creek 2014

ACCREDITATION

Accreditation passes with photo I.D. will be required to access the venue.

Accreditations will be accepted **ONLY** via the **Deep Creek 2014 online accreditation system**.

Accreditation/Registration opens 30 March 2014 at www.deepcreek2014.com

IMPORTANT: Development Coaches will need to register the athletes via the Deep Creek 2014 website. In order to register your team you must be prepared to upload electronic photos for all team members.

Accreditation Fees are accepted via credit card, wire transfer and cash onsite.



ATHLETE & COACH ACCOMMODATION

Camp Hickory will be the official lodging provider for the ICF 2014 Development program. Camp Hickory is located approximately 10 kilometers north of the venue.



Camp Hickory offers dormitory style lodging comprised of large individual rooms with 6-8 bunk bed style beds in each room.

Athletes should plan on bringing the following with them:

Towels/Pillows/Bivy sacks or linens



Smaller private rooms are available for up to 2 coaches



Showers and lavatories are common areas and shared.



To see a complete list of photos of the facility go to the Development Athlete's blog site at:
<http://deepcreek2014developmentathletes.blogspot.com/>

ATHLETE & COACH MEAL PLANS

- Breakfasts each morning will be served buffet style at Camp Hickory. A variety of both hot and cold items will be on offer to include the following

Hot items:

Scrambled eggs
Sausage and/or ham
Pancakes and syrup
Oatmeal

Cold items

Yoghurts
Hard boiled eggs
Fresh fruit
Cereals
Breads/Toasts/Danish
Granola bars

Lunch

A sack lunch will be provided each day for the athletes to take to the training facility. The sack lunch will contain a hearty sandwich, 1-2 pieces of fresh fruit, bottled water, chips and/or cookie selection and condiments.

Dinner

Dinner will be provided each evening at Camp Hickory and will be served buffet style. A large variety will be offered during the 3 weeks but will consist generally of an entrée with side dishes and salads. Desert will be offered with each meal. Depending on weather a BBQ can be arranged as well.

SOCIAL MEDIA:

To keep up to date on the 2014 ICF World Championships follow us on Facebook and Twitter.



<https://www.facebook.com/DeepCreek2014>

<https://twitter.com/DEEPCREEK2014>



Climate

The Adventure Sports Center International is located at 947 meters above sea level. The area is adjacent to Deep Creek Lake with over 100 kilometers of shoreline. In September the average high temperature is 21 Celsius and the low is 10 Celsius.

Electricity

125 volt.

Telephones: The international dialing code for the United States is +1 (or 00 1). Emergency calls within the United States dial 911.

Time Zone: McHenry MD is on Eastern Daylight Savings Time (GMT – 5)

Medical Insurance: All participants should ensure coverage in the United States for out of the ordinary medical and emergency coverage. Organizing committee will not cover expenses in conjunction with hospital treatment

Doping Control: Doping control will be performed in accordance with ICF anti-doping requirements and WADA standards

First Aid & Water Safety: Emergency medical services will be on site along with swift water rescue teams.

TRANSPORT AND ACCESS

Getting Here

Direct highway access makes it an easy drive from anywhere!

Garrett County, Maryland's westernmost county, is less than a three-hour drive from the metropolitan areas of Washington DC and Baltimore and less than two hours from Pittsburgh, PA.

From	Distance
Baltimore, MD	292 km
Washington, DC	285 km
Pittsburgh, PA	195 km
Morgantown, WV	70 km



Longitude: 39.56

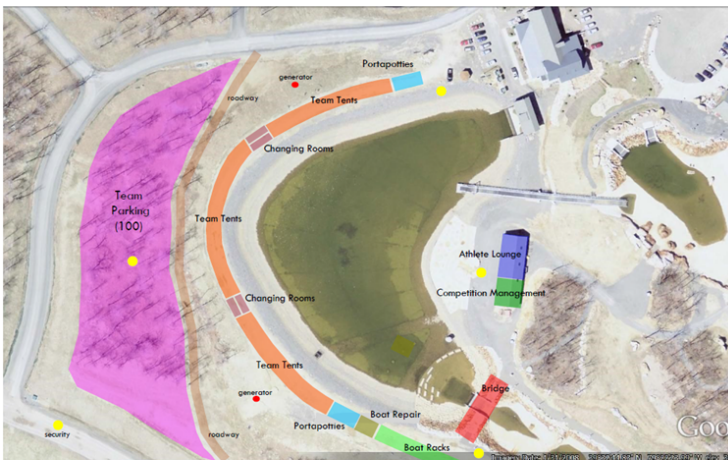
Latitude: 79.36

International Airports

Washington, Dulles (IAD)

Baltimore, (BWI)

Pittsburgh International (PIT)



ICF CANOE SLALOM WORLD CHAMPIONSHIPS

September 16-21, 2014
 Adventure Sports Center International
 McHenry, MD
 Event site plan for athlete village



ATHLETE SERVICES

Fitness Gym and Swimming Pool Access: A fitness/swimming pass at the Garrett College Community Aquatic Recreation Complex (CARC) will be available to all athletes and their families. Cost and information for this pass will be available 1 January 2014 and can be booked at the time that team leaders register.

Race Ambassador's Program: Local residents of the McHenry area are volunteering to become "Race Ambassadors". The ambassadors will be a local point of contact for team leaders and also families of the athletes in learning about the area and helping with local information and trip planning.

