



ICF Canoe slalom Course setting requirements

Version 1.0 - Published on May 2023

<i>I. Canoe and kayak course</i>	3
A. Gates	3
B. Start and finish lines	3
<i>II. Kayak cross course</i>	3
A. Start platform	3
B. Directional Buoys	3
C. Roll barrier and roll zone	4
D. Finish line	4
<i>Appendix A canoe slalom gate settings</i>	5
<i>Appendix B Kayak Cross start area layout</i>	6

I. CANOE AND KAYAK COURSE

A. Gates

There must be an easily accessible and changeable regulation system which allows for the regulation of each pole of the gate individually (cf. Appendix A)

- Transverse and longitudinal wires must be tightened.
- Each gate must consist of a double cross bar mounting system as described in appendix A. This system helps to better define gate line in all circumstances (e.g., wind, strong pole motion)
- Bowline knots ([tutorial](#)), easy to learn, to check and to remove are recommended for attaching:
 - the poles to the lower crossbar via a 5 cm rope and a carabiner. The total attachment system length must not exceed 10 cm. (cf. Appendix A – Detail A)
 - the lower crossbar to the height adjusting ropes (cf. Appendix A – Detail B)

B. Start and finish lines

- The start and finish lines must be located in calm water areas along the course to minimize the potential water interferences with the timing system (photocells).

II. KAYAK CROSS COURSE

A. Start platform

- The start platform and pre-start area must be set to allow:
 - The preparation of the athletes at the start
 - The queuing of the athletes in the waiting area
 - The distribution of the coloured bibs
 - The checking of the equipment (boat weighing scales, paddle thickness, helmets, long sleeves)
- The start lanes must be numbered from 1 to 4. Lane n°1 being the closest lane to river right up to lane n°4 being the closest lane to river left.
- In the waiting area, a designated system showing the lane numbers should be set to order the athletes before they access the ramp.

A scheme of the start area layout is given in Appendix B

B. Directional Buoys

- Transverse and longitudinal wires must be tightened.
- Each buoy must be filled with 3 litres of water.
- The gate must hang vertically. Chains and carabiners can be used to adjust the position of the hanging system above the buoy.
- Bottom of the buoys must be set as closest as possible from the water

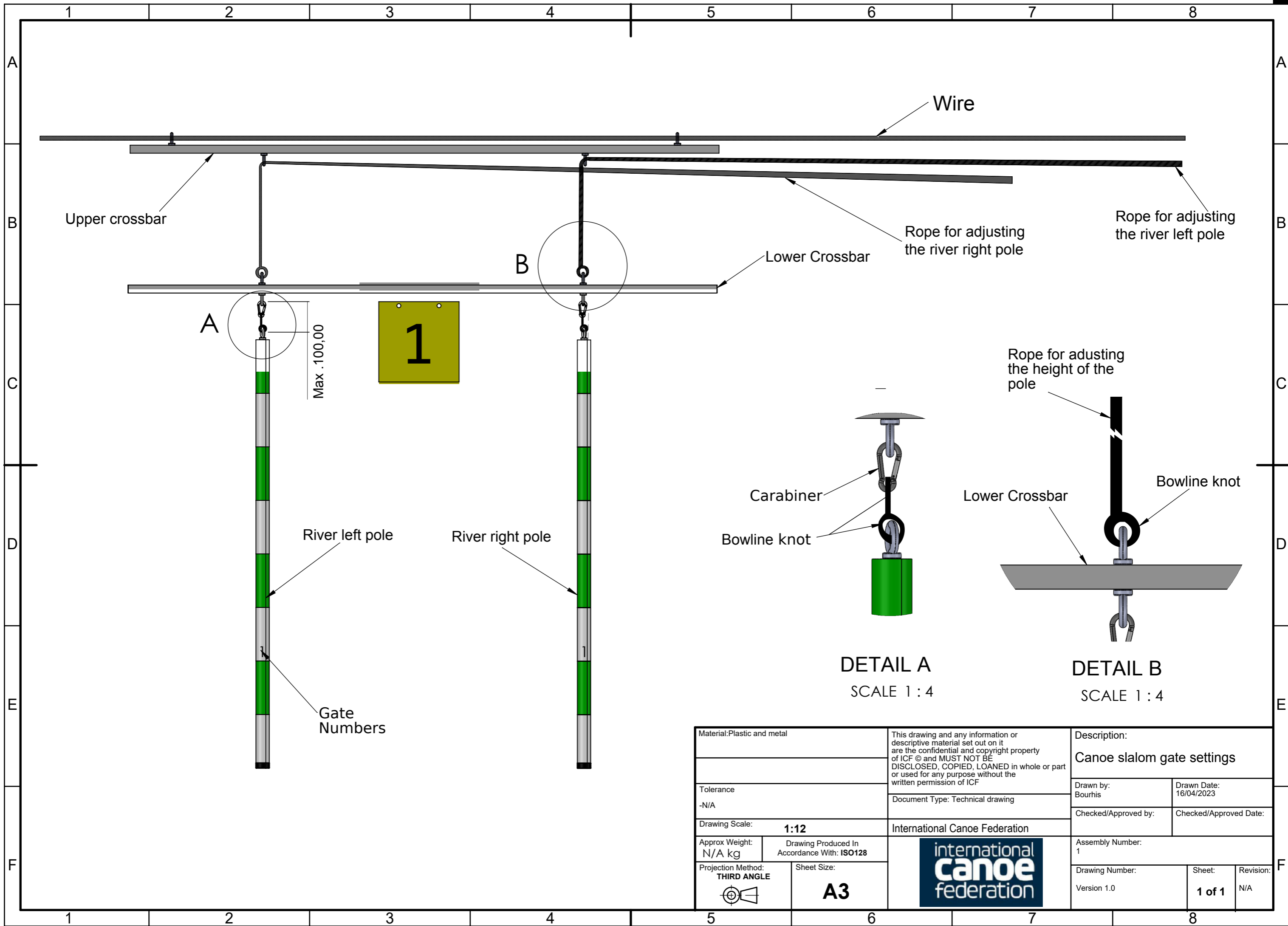
C. Roll barrier and roll zone

- Hung and/or attached from the sides via straps and/or ropes, the roll barrier motion must be minimized as much as possible.
- The first roll zone flag or mark is located 1m upstream from the roll barrier
- The second roll zone flag or mark is located at least 5 m downstream the roll barrier.
- It is strongly recommended to define the roll zone using whitewater features upstream or downstream (drop, stopper)

D. Finish line

The finish line must be located in a calm water area along the course to minimize the potential water interferences with the timing system (photocells and photofinish).

APPENDIX A CANOE SLALOM GATE SETTINGS



Wire

Upper crossbar

Lower Crossbar

Rope for adjusting the river right pole

Rope for adjusting the river left pole

A

B

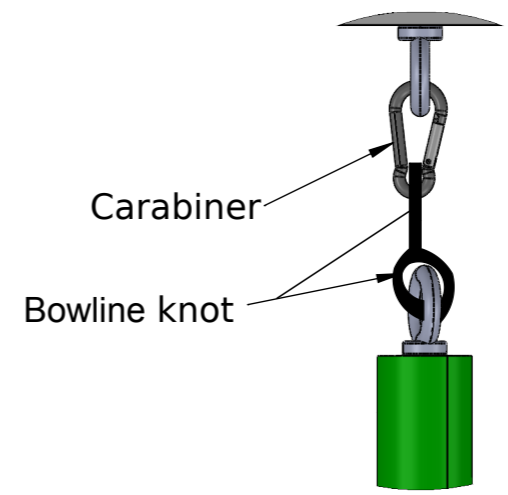
Max .100,00

1

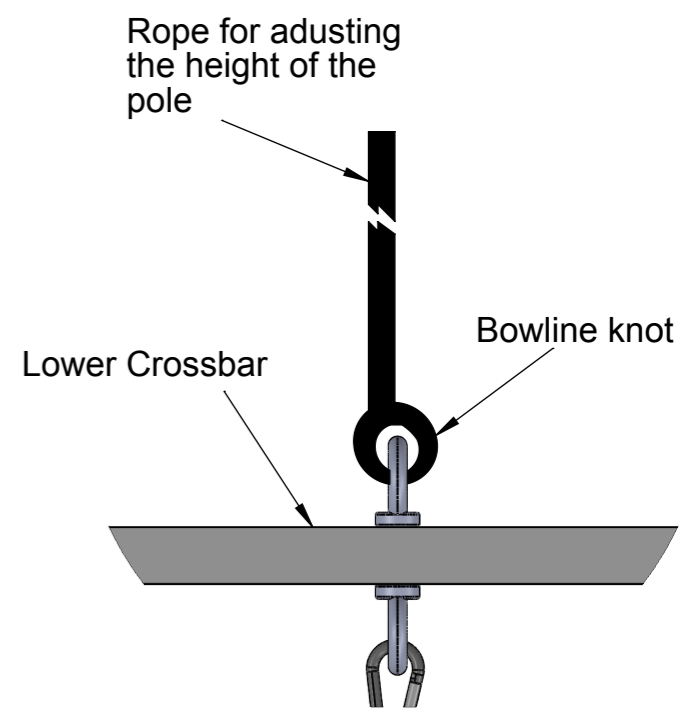
River left pole

River right pole

Gate Numbers



DETAIL A
SCALE 1 : 4



DETAIL B
SCALE 1 : 4

Material: Plastic and metal		This drawing and any information or descriptive material set out on it are the confidential and copyright property of ICF © and MUST NOT BE DISCLOSED, COPIED, LOANED in whole or part or used for any purpose without the written permission of ICF	Description: Canoe slalom gate settings			
Tolerance -N/A			Document Type: Technical drawing	Drawn by: Bourhis	Drawn Date: 16/04/2023	
Drawing Scale: 1:12		International Canoe Federation		Checked/Approved by:	Checked/Approved Date:	
Approx Weight: N/A kg	Drawing Produced In Accordance With: ISO128		Assembly Number: 1			
Projection Method: THIRD ANGLE	Sheet Size: A3			Drawing Number: Version 1.0	Sheet: 1 of 1	Revision: N/A

APPENDIX B KAYAK CROSS START AREA LAYOUT

