



2024 ICF CANOE MARATHON WORLD CHAMPIONSHIPS (PARA**) SENIORS, UNDER 23 AND JUNIORS

19 - 22 September
Metkovic, Croatia

INFORMATION PARA AND ELITE

** Demonstration



THE WORLD CHAMPIONSHIPS WILL BE THE QUALIFICATION COMPETITION FOR THE WORLD GAMES 2025 (CHENGDU)

QUALIFICATION RULES

1. CLASSES

MEN K1 SENIORS, WOMEN K1 SENIORS

2. EVENTS

MEN K1 Short distance
MEN K1 Long distance
WOMEN K1 Short distance
WOMEN K1 Long distance

3. Quota allocation

	2024 ICF CANOE MARATHON CHAMPIONSHIPS						Short distance	Host country	Total
	Long-distance								
Gender	Africa	America	Asia	Europe	Oceania	Next best ranked	Next best ranked		
Men	1	1	1	1	1	11	3	1	20
Women	1	1	1	1	1	11	3	1	20

4. Quota Per nation

An NF can obtain a maximum of one (1) quota place per class, unless rule 8.d is applied.

8d. If the quota places cannot be reallocated as outlined in 8a, 8b and 8c, a second quota place will be allocated from the best ranked second NF boat from the 2024 ICF Canoe Marathon World Championships Long-distance race in the same class, until all quota places have been allocated.

For complete Canoe Marathon World Games 2025 Chengdu (Qualification System) [click link](#)

ACCREDITATION

For Elite and Para, only Team leaders must collect the accreditation for their team.

THERE WILL BE LIVESTREAMING, FOR LINK GO THE WEBSITE ICF OR WEBSITE <https://www.wchmetkovic24.com/>



YOU CAN FIND LATEST INFORMATION AT THE NOTICEBOARDS

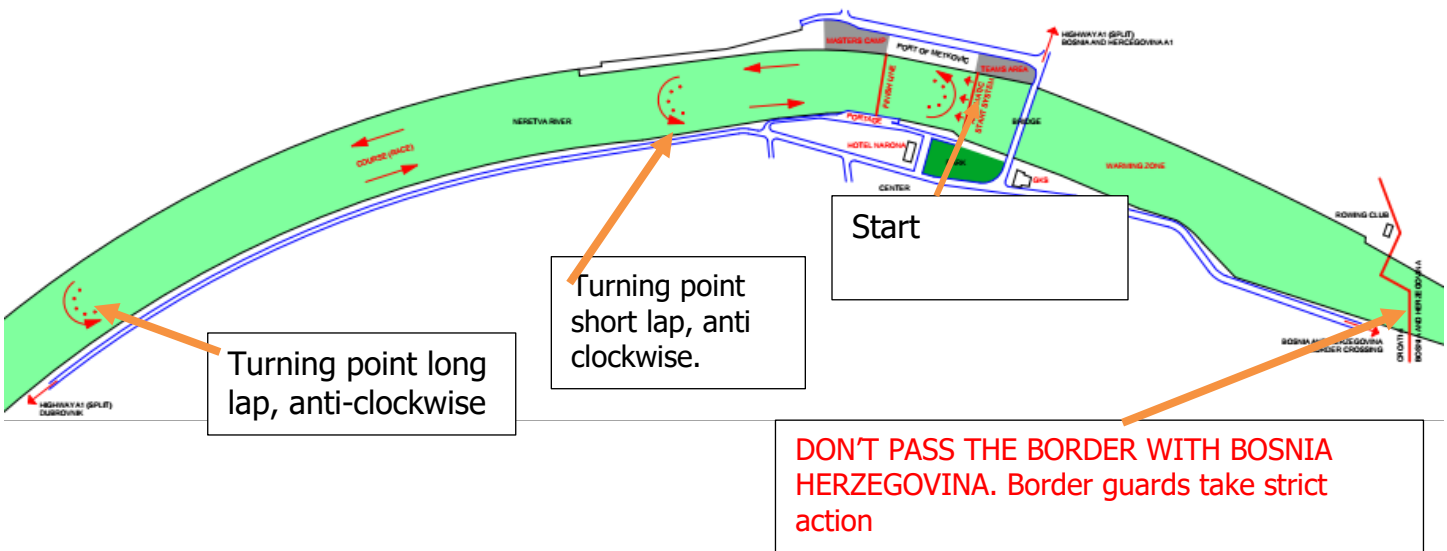
PROVISIONAL TIMESCHEDULE, THE CORRECT WILL BE CONFIRMED AT THE TEAMLEADERSMEETING

PRELIMINARY TIMESCHEDULE WORLD CHAMPIONSHIPS MARATHON					
			long laps	Portage	small lap
Wednesday 18 September	11:00	Teamleadersmeeting			
	12:00	Briefing Paracanoe competition			
	09:00-15:00	Training on the course			
	15:15	Men's Open Paracanoe	3	0	+1 small
	15:20	Men's VL3	3	0	+1 small
	15:25	Men's VL2	3	0	+1 small
	15:30	Men's VL1	2	0	+1 small
	15:35	Women's KL3	2	0	+1 small
	15:40	Women's KL2	2	0	+1 small
	15:45	Women's KL1	2	0	+1 small
	17:00	Award Ceremony Paracanoe			
17:30	Openingsceremony				
Thursday 19 September	9:00	K1 Women Juniors	5	4	+ 1 small
	9:05	C1 women juniors	3	2	+ 1 small
	10:50	K1 women seniors heat 1	3,4km	2	3
	11:15	K1 women seniors heat 2	3,4km	2	3
	11:40	K1 men seniors heat 1	3,4km	2	3
	12:05	K1 men seniors heat 2	3,4km	2	3
	12:30 - 14:15	Training on the course			
	14:15	Award ceremony K1WJ			
	14:20	Award ceremony C1WJ			
	14:30	C1 Men Juniors	4	3	+ 1 small
	16:00	C1 women seniors final	3,4km	2	3
16:30	C1 men seniors final	3,4km	2	3	
17:00	K1 women seniors final	3,4km	2	3	
17:30	K1 men seniors final	3,4km	2	3	
17:50	Award Ceremony C1MJ and short distance C1W, C1M, K1W and K1M				



			long laps	Portage	small lap
Friday 20 September	9:00	K2 Women Juniors	5	4	+ 1 small
	9:05	C1 Men u23	5	4	+ 1 small
	11:00	Women's Open Paracanoe	2	0	+ 1 small
	11:05	Men's Paracanoe KL1*	2	0	+ 1 small
	11:05	Men's Paracanoe KL2*	3	0	+ 1 small
	11:05	Men's Paracanoe KL3*	3	0	+ 1 small
	11:10	Women's VL3*	2	0	+ 1 small
	11:10	Women's VL2*	2	0	+ 1 small
	11:10	Women's VL1*	2	0	+ 1 small
	11:15	Award Ceremony K2WJ			
	11:20	Award Ceremony C1MU23			
	14:00	Award ceremony Paracanoe			
	13:00 - 14:00	Training on the course			
	14:30	K1 Women u23	6	5	+ 1 small
	14:35	C2 Men Juniors	4	3	+ 1 small
	14:40	C1 Women U 23	3	2	+ 1 small
	16:35	Award Ceremony C2MJ			
16:45	K1 Men u23	7	6	+ 1 small	
19:00	Award Ceremony K1WU23, C1WU23 and K1MU23				
Saturday 21 September	8:15	K1 women	7	6	+ 1 small
	10:40	C1 Men	6	5	+ 1 small
	12:45-13:30	Training on course			
	13:45	Award Ceremony K1WS			
	13:50	Award Ceremony C1MS			
	14:00	K1 Men Juniors	6	5	+ 1 small
	14:05	C1 Women	4	3	+ 1 small
	16:10	K1 men	8	7	+ 1 small
	16:15	Award Ceremony K1MJ			
	16:20	Award Ceremony C1WS			
18:35	Award Ceremony K1MS				

			long laps	Portage	small lap
Sunday 22 September	9:00	K2 men juniors	6	5	+ 1 small
	11:00	K2 Women	7	6	+ 1 small
	11:05	C2 Men	6	5	+ 1 small
	13:30	Award Ceremony K2MJ			
	13:35	Award Ceremony C2M			
	13:40	Award Ceremony K2W			
	14:00	K2 Men	8	7	+ 1 small
	16:20	Closing Ceremony and Award ceremonies K2MS			



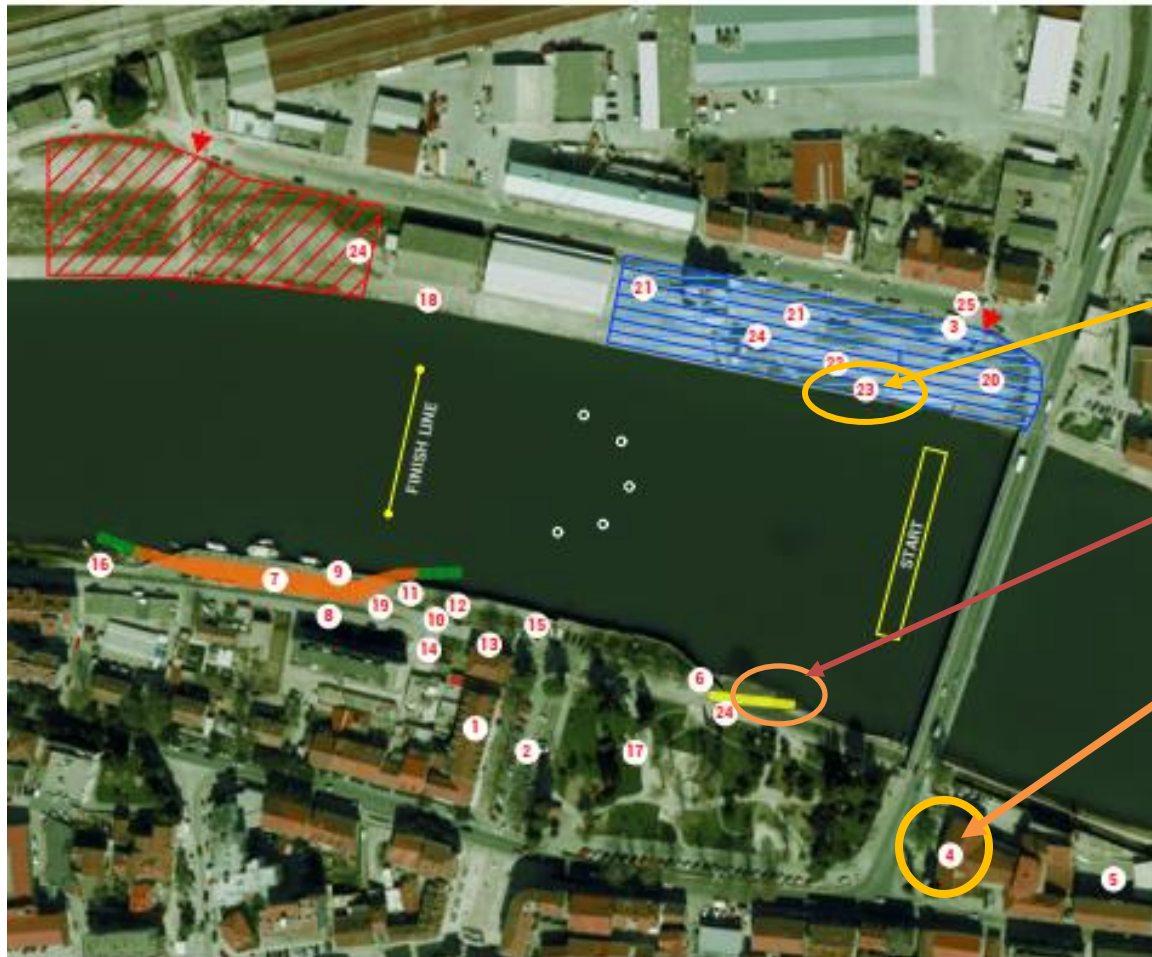
After the start you have to go downstream around the turning point (anti-clockwise) and then upstream, anti-clockwise turning point at start line, and after the last portage you have to do a small lap (also anti-clockwise) and then to the finish between 2 buoys with flags on them. **All turning points are anti clockwise**

There is a Jetty Disembarkation. The running distance of the portage is about 100 metres with a pontoon embarkation.

NO PORTAGE LONG DISTANCE AFTER THE FIRST LAP FOR PADDLERS, SO THE FIRST PORTAGE IS AFTER 7.2 KM

SHORT DISTANCE, EVERY LAP A PORTAGE, 2 LAPS WITH PORTAGES AND LAST FINAL LAP OF APPROX. 1,2 KM

THE REGATTA VENUE



RAFTMARSHAL

Boat control after race, only first 4 boats

Accreditation centre and team leaders meeting

- | | | |
|---|---|---|
| <ul style="list-style-type: none"> 1 HOTEL NARONA - ICF • MEDICAL ROOM • ANTI-DOPING ROOMS • ATHLETE CLASSIFIERS ROOM/PRESS 2 PARKING ZONE (VIP, ICF, PRESS), BUS STOP 3 INFO POINT 4 ACCREDITATION CENTER • TEAM MEETING 5 OPENING CEREMONY 6 PARA-ATHLETE'S AREA 7 PORTAGE 8 GRAND STAND 9 MEDAL AWARD PODIUM 10 BIG SCREEN 11 PRESENTATION ROOMS (COMMENTATORS & ANNOUNCERS) 12 VIP AREA | <ul style="list-style-type: none"> 13 FOOD/DRINKS 14 ATHLETE'S LUNCH 15 CAM ROOM (ICF) 16 RESCUE AREA 17 LOCAL SHOPS 18 FINISH LINE ROOM 19 MIXED ZONE 20 BOAT REPAIR / BOAT PRESENTATION 21 TEAM TENTS 22 BOAT RACKS 23 BOAT CONTROL 24 TOILETS 25 BUS STOP | <p>RESTRICTED AREA</p> <ul style="list-style-type: none"> MASTERS AREA AND TRAILERS PARKING ZONE TEAMS AREA PORTAGE PONTOONS PARA-ATHLETE'S RAMP ENTRANCE TO THE ZONE |
|---|---|---|



Team leaders meeting

Meeting will be on Wednesday September 18 11:00 (see map)

- | | |
|---|----------------------|
| 1. Welcome by the Organizing Team | Organiser |
| 2. Introduction of main officials for the World Championships | Ruud Heijseelaar |
| 3. Roll Call of the nation's | Stien Verlinden |
| 4. Information of location of specific events, World Cup | Organizer |
| 5. Course details | Tim Cornish |
| 6. Confirmation of entries | Stien Verlinden |
| 7. Other matters | Ruud Heijseelaar/HOC |

Only the Team Manager of each Nation and his assistant will be eligible to attend the team leaders meeting.

FINAL STARTLIST WILL BE PUBLISHED AFTER TEAM LEADERS MEETING AND AT THE ICF WEBSITE

We would like to go paperless as much as possible and will communicate all information regarding the WCH via the team leaders WhatsApp.

We will also not print out start lists for the team leader meeting, and if you miss your team leader in the WhatsApp group contact Ruud Heijseelaar +31655338069.



2. OFFICIALS WORLD CHAMPIONSHIPS SENIORS, UNDER 23 AND JUNIORS

Chief Official	Ruud Heijselaar	ICF
Deputy Chief Official/Safety Officer	Stien Verlinden	ICF
Chief Course Umpire	Tim Cornish	ICF
Dept. Chief Course Umpire	Brian Chapman	ICF
Chief Finish Line	Edwige Bakkaus	FRA
Chief Raft Marshall	Elly Onnekes	NED
Boat Control	Birger Vik	NOR
Chief Portage Umpire	Delia Merayo	ESP
Penalty Box	Terry Newsome	NZL
Starter	Marian Sarbu	BEL
Aligner	Marek Mazur	CZE
Course Umpires	Suzanne Britt	USA
	Amr Temraz	EGY
	Miki Bando	JPN
	Anne Fjeldvig	DEN
	Peter Saly	HUN

NTO's

3. Provisional start-list

[Click link](#)

4. **QR CODE**





5. **ACCREDITATION**

Accreditation for the World Championships will be included within the package for each team, if there are any discrepancies or items missing would you please refer to the accreditation desk which will be situated at the Regatta Course.

Sign a paper that relieves the organization from liability if an accident occurs.

The desk will be open for team leaders Saturday September 14 from 08.00 to 20:00.

Whilst it is the organizer's objective to keep restrictions down to a minimum it is inevitable that there must be some area, which will require restricted access.

The Boat shed areas/Competitors area will be open to those with a valid accreditation card.

6. **DISSEMINATION OF INFORMATION**

There will be an information office in the athletes area.

Announcements, signage to the various areas will be prominently displayed.

Announcements, program changes and any information needed will be available at Info center.

7. **BOAT MEASURING**

There will be boat control for the first 4 boats in each race at the Para ramp (see map).

8. **BOAT NUMBERING**

The boats will be numbered with vertical plastic numbers provided at the raft marshal place and these will be fixed on to the boat by the means of a plastic slot, which must be screwed, to the deck of the boat. **The numbers must be secured to the slot with a pin inserted through the hole in the slot and the number. This will prevent the number falling off during a portage. If number is not turned in there will be a 10 euro fee.**

All paddlers will ensure that all boats are equipped with suitable number slots with a hole in them.

The boat numbers will be distributed for each day race at the raft marshal place.

The number boards will be number coded per age group and numbers allocated in a format to make class identification possible where different classes are starting in the same start.

Boat repairs or assistance with boat problems will be provided by the officials and they should consult the main repair official who will be available in the boats shed area.

9. **START PROCEDURE**

Starter is Marian Sarbu.

The start will be from behind an automatic starting gate.



All classes start positions have been completed by random draw (All in the K1 and C1 women's and men's seniors, last year's best paddlers, placed in the middle) and you will find the draw positions on the website.

The draw positions are numbered from the left facing in the direction of the course.

Boats will line up in a numerical order and will be checked by the starter and aligner.

Launching on to the water will only be from the indicated rafts and this will be a controlled area, the officials will check each person's boat on to the water. The boat must be in an undamaged state.

Paddlers will only be allowed onto the water with their correct boat and also must be correctly attired in their National or club racing dress.

The warm up area will be in the area behind the starting gate. The starter will call the paddlers to the start line.

Please note that 500 meters upstream is the border with Bosnia-Herzegovina and crossing the border is not allowed. Border guards take strict action.

Please ensure that paddlers approach their start as quickly as possible in order that the starts may commence on time.

ALL BOATS RACING HAVE TO BE ON THE WATER WELL BEFORE THEIR START TIME. RAFT MARSHALLING WILL CLOSE 10 MINUTES BEFORE START TIME OF THE SESSION. BOATS HAVE TO PASS THE RAFT MARSHALLING, OTHERWISE THEY ARE CONSIDERED NOT TO START.

THE STARTER WILL NOT WAIT FOR LATE PADDLERS.

The starter commands will be clearly heard by all the competitors through loud speakers placed at points along the starting gate.

All his commands will be in English and the start command will be READY - GO

Please note rule 10.12 and the possibility of time penalties.

The timing and race results will be dealt with at the finish control and access to this area will only be available to the Competition Committee and main event officials.

Video finish equipment is installed and will be used where applicable.

The finish line is between two white buoys with red flags on it. The exact line will be on or slightly before the buoys line. An audible signal will identify the finish of each paddler.

After the finish the competitors have to paddle beyond the line and disembarking at the same place where they got onto the water (the first 4 boats going to Para ramp see the map) .

Care must be taken as finished paddlers will need to cross the path of paddlers that will be still crossing from the bottom turn to the portage for the last short lap.

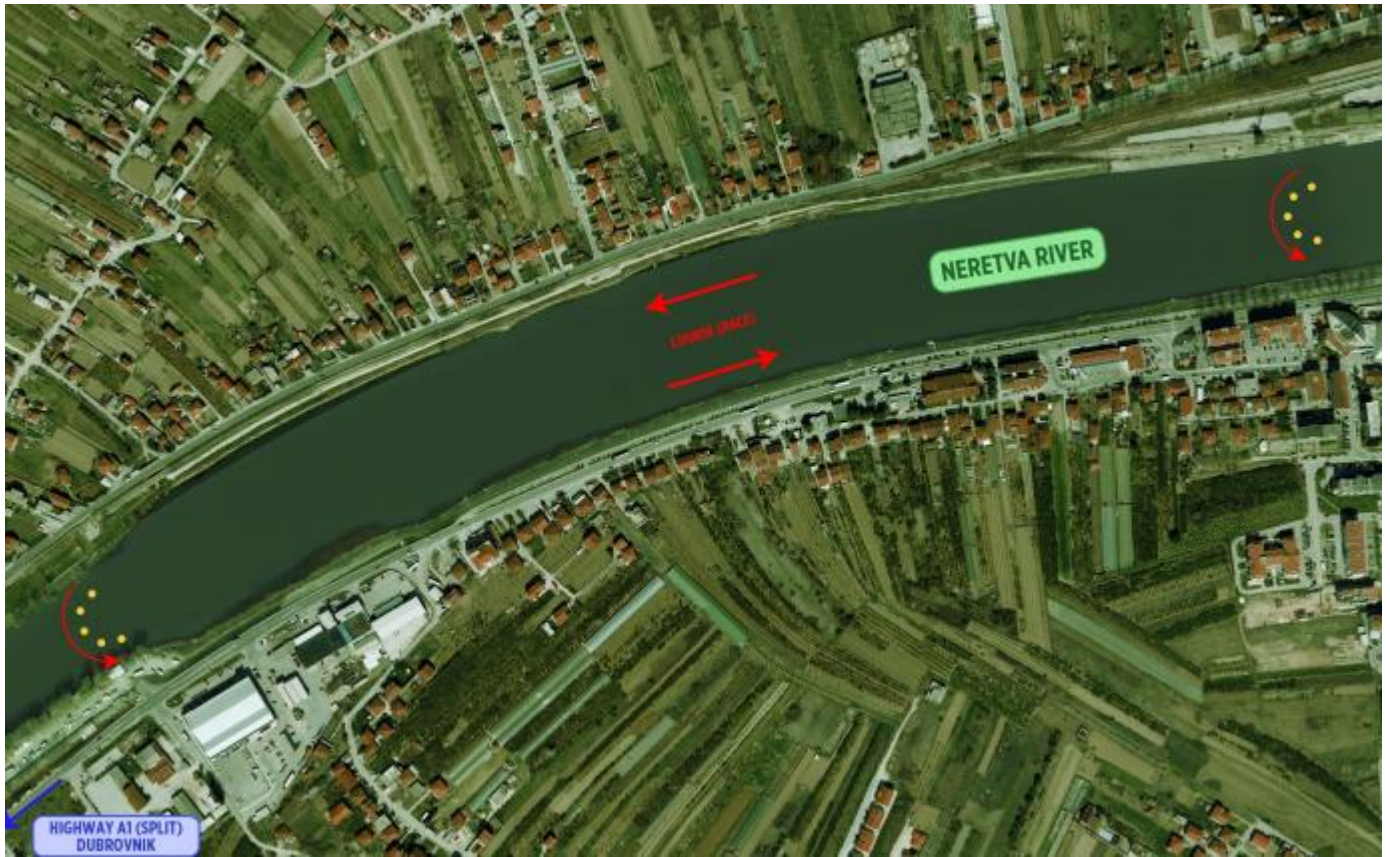


10. **FINISH AREA**
Paddlers should clear the finish area as soon as possible on the route described previously and must not under any circumstances cross the finish line twice. The finish line is between 2 buoys with flags on it.

To be careful to avoid obstructing boats still racing around the turn.

All disembarkation must be at the same place where you embarked before your race.

Boat control for first 4 boats in each race, see hereabove for the correct place.





11. **SPECIAL RULE PORTAGE PORTAGE**

- The portage helpers' lane will be adapted so that team helpers are able to pass each other.
- The feeding lane shall be 4 metres wide and about 40 metre long.
- The team helpers must respect the distance between each other during feeding.
- The non-feeding lane shall be appr. 4 metres wide.
- The penalty box should be 3 metres wide and 10 metres long. Paddlers stay at the right side of the boat.

Pontoons for embarkation and disembarkation

- Only athletes will be allowed on the pontoons.

None of the team helpers are allowed to enter the non-feeding area or support over the separating barrier. All team helpers have only access to the feeding lane if they wear a vest with name of their nation.

Marshals will be instructed to ask other helpers to stay behind the barriers.

With competitors running at high speed, with canoes on their shoulders, with restricted vision it is important for safety that the marshal's instructions are obeyed.

Helpers should not stop suddenly after helping their paddler as there may well be another boat coming behind them and the paddler of this second boat may not see you. Go to the end of the feeding lane and return to the beginning by the third lane provided.

Boat control after the race

- There will be a boat control for the first 4 boats after each race. **(Boat control is at para place)**
- Boats will arrive at designated areas, one after the other.
- The athlete will take the boat to boat-control.

MEDALISTS ARE ASKED TO COME TO THE MIXED ZONE RIGHT AFTER BOATCONTROL FOR AN INTERVIEW

12. **MEDICAL ATTENTION**

There will be an ambulance stationed at the racing area and because of the radio link with all sections of the course medical assistance can be readily summoned at short notice.

13. **ACCOUNT PAYMENTS**

Please note that all payment for accommodation and accreditation fee must be paid by September 18, 18:00 in Euros to the event treasurer who will be found in the Organizers' office.
Acceptable methods of payment: cash (€) & CARD

14. **BOAT STORAGE**

Boats will be able to be stored at the Event venue on racking that can be allocated and there will be 24 hour surveillance to ensure security.

Please advise the event officials if you require any boat storage racking and spaces will be allocated to you.



15. **MEDAL CEREMONY**

The medal ceremony will take place according to the schedule.

All competitors who are to receive medals should assemble at the left-hand side of the award area noting the order of the awards will be as follows -

Behind them will be three ladies with the medals on cushions.

The event will be announced and the athletes and officials will march on to the prize giving area.

PLEASE ENSURE THAT ALL PADDLERS RECEIVING MEDALS HAVE FULL NATIONAL OR CLUB TRACK SUITS, WITH NO HATS OR SUNGLASSES .

NO MEDAL CEREMONY IF NOT ALL MEDALLISTS ARE PRESENT IN TIME.

16. **PRESS FACILITIES**

The press area allocated close to the portage will provide with communication facilities.

17. **TRAINING FACILITIES**

The Event venue will be available for all competitors for training in the days before the event.

NO ACCESS FOR ELITE ATHLETES ON TO THE RACE COURSE DURING THE MASTERS COMPETITION 16 - 17 September.

18. **SAFETY**

There will be motorboats with safety umpires covering all the parts of the course and these will be in radio link with the organisers in case of any problems.

19. **LOCAL INFORMATION**

Details of local information and entertainment will be available from the information desk in the main administrative area.

20. **LATEST INFORMATION**

You can find the latest news (also start lists) on website and notice boards (near info)



IMPORTANT RULES

RULES OF COMPETITION

All athletes and team officials are expected to be familiar with the requirements of the Canoe Marathon Competition Rules which are available on the ICF website. The rules also specify the penalties that will be applied if any rules are broken.

RULES 2024

The team leader will:

- 9.2.1.b Be the main contact with the Chief Official and the HOC throughout the competition
- 9.2.1.c Submit any changes or comments in relation to the competition
- 9.2.1.c Arrange to submit the protest or appeal as stipulated if necessary.

10.12 DISQUALIFICATIONS AND PENALTIES

10.12.1 Any athlete who attempts to compete in a race by any other than honourable means or who breaks the racing rules, or who disregards the honourable nature of the racing rules will be penalised or disqualified for the duration of the race concerned.

10.12.2 - Should an athlete have failed to follow the correct course of the race (for example missed a turning buoy) the athlete has broken the racing rules and will be subject to a penalty:

10.12.2.a If the Race Umpire believes the athlete has gained a small advantage on other athletes: Time penalty of 15 seconds will be given;

10.12.2.b If the athlete has gained a major advantage a disqualification (DSQ) will be imposed;

10.12.2.c Should a buoy be missed as a result of a collision in group racing during a turn this will be investigated and the boat that caused the collision will be disqualified (DSQ), see article 10.12.3. The athlete who missed the buoy due to collision will not be penalized.

10.12.3 - Collision or damage:

10.12.3.a Any athlete who is considered by a Course Umpire or Race Official to have been responsible for a collision, or who damages the canoe or kayak or paddle of another athlete or unnecessarily deviates from the direct racing line or deliberately blocks the path of an athlete may be penalized or disqualified;

10.12.3.b A collision will be considered to be an event where an athlete's boat or paddle touches another athlete's boat or paddle in a way that disadvantages another athlete;

10.12.3.c If it is considered that other paddlers have only had some minor disadvantage compare to other athletes as a result of the incident the responsible athlete will get a time penalty of 30 seconds;

10.12.3.d If it is considered that the incident has given other paddlers a major unfair disadvantage the penalty will be disqualification (DSQ).



10.12.5 - Handling of penalties:

10.12.5.a Time penalties as decided by the Chief Course Umpire are not subject to appeal;

10.12.5.b Time penalties must be executed in a designated area at the portage and supervised by a Race Official or will be added to the athletes finishing time if a time penalty stop is not used in the competition;

Handling of penalties

Time penalties are decided by the Chief Course Umpire and are not subject to appeal.

Time penalties shall be executed in a designated area at the portage and supervised by a race official or will be added to the competitors finishing time if a time penalty stop is not used in the competition.

10.12.5.c Disqualifications are decided by the Competition Committee and are subject to an appeal.

10.12.7 - All penalties or disqualifications must be confirmed by the Competition Committee in writing immediately, giving the reasons. The Team Leader of the athlete/team must acknowledge the receipt on the notice copy with the exact time, which marks the start of the protest time.

10.12.6 - If an athlete is observed by an International Official to throw a drink bag into the water, they will receive a 30 second penalty. The decision is to be confirmed by the Chief Course Umpire and cannot be the subject of an appeal

Implementation

Competitors must not dispose of their drink bags or small plastic energy syrup packets while on the water or on the portage pontoons and ramps. Drink bags and small plastic energy syrup packets must be discarded only on the portage anywhere between the pontoons/ramps.

Accompanying infringement

10.9.1 - An athlete may not be accompanied along the course or assisted in any way by other canoes/kayaks not entered in the event or by any vessel (e.g., runabout).

Such acts shall entail the disqualification of the competitor/s concerned.



PENALTIES

- Penalties that are incurred during the race will be imposed at the portage in the penalty box or added to the competitors time if not possible to be taken during the competition.
- In short distance the penalty will be add at the racing time.
- **A yellow flag** will be displayed in the beginning of the portage area when a penalty has been imposed
- Penalties must be taken at the Penalty box. If there is any penalty, yellow flag will be raised and number will be displayed on a noticeboard at the start of the portage. Paddler has to take the penalty immediately at the portage. If the penalty is not taken on the portage then the penalty will be added to the athlete's race time

There will be **an electronic board** at the beginning of the portage indicating which boat number has been given a penalty and the length of the penalty. It is the paddlers responsibility to check the penalty board.

The penalised competitor will be required to stop in the penalty box for the designated period at that portage.

The penalty box will be at the end of the portage on the right-hand side. A timing clock is at the penalty box indicating the penalty time.

Boat scrutineering infringement

Should a competitor have completed a race in a kayak or canoe which is shown, upon inspection, not to fulfil the ICF classifications, he or she shall be disqualified from the race in question.

Disqualifications are decided by the Competition Committee and are subject to appeal.

All penalties or disqualifications by the Competition Committee must be confirmed in writing immediately, giving the reasons. The team leader of the competitor must acknowledge receipt on a copy of the notice of disqualifications, with the exact time, which marks the start of the protest time. .

ADEL Certification

International Canoe Federation congress has endorsed a proposal to extend compulsory anti-doping education courses to all senior, U23 and junior international athletes and team staff across all canoeing disciplines.

It is important federations and teams understand that these education courses are compulsory for all international athletes and need to be completed **before they compete in an international competition.**

This course gives athletes information about the dangers of doping and the importance of anti-doping controls and promotes positive attitudes to avoiding doping.

For anyone who did the course earlier, it will be not necessary to do the education again.

All paddlers who compete in this World Cup need an ALPHA certification.