

INFORMATION BULLETIN 1  
2019 ICF OCEAN RACING WORLD  
CHAMPIONSHIPS  
PRESQU'ÎLE DE QUIBERON  
9<sup>TH</sup> TO 15<sup>TH</sup> SEPTEMBER 2019



## Contents

|                                    |    |
|------------------------------------|----|
| Introduction.....                  | 3  |
| Words of Presidents .....          | 3  |
| Key dates .....                    | 4  |
| Organising committee .....         | 4  |
| Useful contacts.....               | 4  |
| GENERAL INFORMATION.....           | 5  |
| How to reach Quiberon ? .....      | 5  |
| Accommodation .....                | 5  |
| SPORT INFORMATION .....            | 6  |
| Do you need visas ? .....          | 6  |
| Special regulations in France..... | 6  |
| Competition venue map.....         | 7  |
| Entries.....                       | 8  |
| APPENDIXES.....                    | 10 |
| Contact details form.....          | 10 |
| Travel details .....               | 10 |
| Visa form .....                    | 11 |

## INTRODUCTION

From 9<sup>th</sup> to 15<sup>th</sup> September 2019, Saint-Pierre Quiberon will welcome the 2019 ICF Ocean Racing World Championships.

It will be an opportunity for the general public to discover this discipline and to come to these beautiful competition site.

The cities of Saint-Pierre Quiberon and Quiberon proved their capacity to host events : each year in alternation with Brest, they welcomed the Breizh Ocean Racing, which was World Cup stage in 2017 and 2018.

Feel free to join us to share together strong emotions and nice sensations through exciting adventure !

The Organising Committee

## WORDS OF PRESIDENTS

For many years, the French Canoe Federation gained a lot of skills in hosting international events of great quality. For Ocean Racing, this is relatively new at this level but this is a very exciting challenge !

This World Championships is the last event of a three-year cycle :

- 2017 ICF Ocean Racing World Cup – Brest
- 2018 – ICF Ocean Racing World Cup – Saint-Pierre Quiberon
- 2019 – ICF Ocean Racing World Championships – Saint-Pierre Quiberon

It is with the same enthusiasm and the same passion that French Canoe Federation and Saint-Pierre Quiberon will work together in order to lead a new exciting projet.

We hope to see you soon in Saint-Pierre Quiberon on the beach !

Jean ZOUNGRANA, French Canoe Federation President  
Laurence LE DUVEHAT – Mayor of Saint-Pierre Quiberon  
Bernard HULLIER – Mayor of Quiberon

## KEY DATES

|  |   |
|--|---|
| 20 <sup>th</sup> January 2019  | Opening of numerical entries            |
| 20 <sup>th</sup> January 2019  | Opening of online accreditations        |
| 1 <sup>st</sup> August 2019  | Closing of numerical entries            |
| 9 <sup>th</sup> August 2019  | Deadline for visa requirement           |
| 1 <sup>st</sup> September 2019                                       | Closing of nominal entries              |
| Monday 9 <sup>th</sup> September                                     | Opening of competition venue            |
| From Wednesday 11 <sup>th</sup> to Friday 13 <sup>th</sup> September | Waiting period / Competition days       |
| From Tuesday 10 <sup>th</sup> to Friday 13 <sup>th</sup> September   | Trainings                               |
| Tuesday 10 <sup>th</sup> September                                   | Team leader meeting<br>Opening ceremony |
| Saturday 14 <sup>th</sup> September                                  | Closing of the venue                    |

## ORGANISING COMMITTEE

Jean ZOUNGRANA – French Canoe Federation

Laurence LE DUVEHAT – Mayor of Saint-Pierre Quiberon

Bernard HULLIER – Mayor of Quiberon

Evelyne COMBES – HOC General Coordinator

## USEFUL CONTACTS

Website : opening soon

Facebook : <https://www.facebook.com/2019-ICF-Canoe-Ocean-Racing-World-Championships-2704211183137720>

Sport information : [events@ffck.org](mailto:events@ffck.org)

General information : [ocr2019@ffck.org](mailto:ocr2019@ffck.org)

## GENERAL INFORMATION

## HOW TO REACH QUIBERON ?

## #by plane

| Airport      | Distance | Time |
|--------------|----------|------|
| Lorient      | 65 km    | 1h00 |
| Nantes       | 155 km   | 1h45 |
| Saint-Brieuc | 160 km   | 2h00 |
| Brest        | 190 km   | 2h15 |

## #by train

| Train station | Distance | Time       |
|---------------|----------|------------|
| Auray         | 30 km    | 40 minutes |

## #by road

| City                       | Distance | Time |
|----------------------------|----------|------|
| From Paris Highway A11/E50 | 500 km   | 5h20 |
| From Rennes RN 24/RN 166   | 150 km   | 1h45 |
| From Nantes RN 165         | 150 km   | 1h45 |

## ACCOMMODATION

Some information can be find here : <https://www.morbihan.com/quiberon/office-de-tourisme-de-la-baie-de-quiberon-la-sublime/tabid/12438/offreid/9ded550e-51e1-48f5-acd6-d04e3b50fe83>

## SPORT INFORMATION

### DO YOU NEED VISAS ?

France is a state-member of the European Union. The French Embassy in your country will provide you with all detailed information about visas. You will find details in the website on French Foreign Affairs Ministry (<http://www.diplomatie.gouv.fr/en/>).

Please inform in advance but no later than 9<sup>th</sup> August 2019 the Organising Committee together with the visa form whether your team needs entry visas to France.

You will find in appendix a visa form to fulfil.

### SPECIAL REGULATIONS IN FRANCE

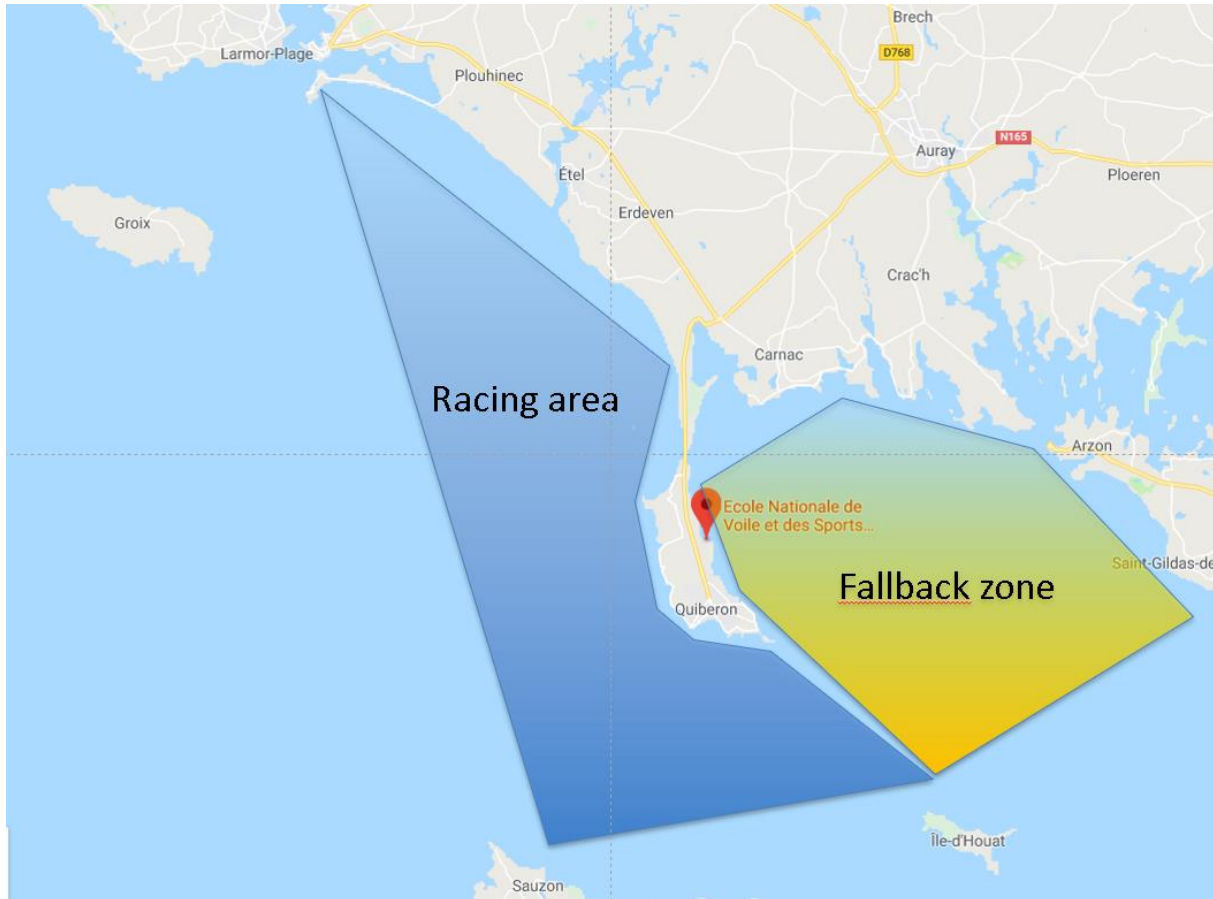
Evin laws (N. 91-32 January 10<sup>th</sup> 1991)

This law forbids advertising for all alcoholic beverages (any level of alcohol including beer) and tobacco inside sports arenas. No advertising on tracksuits, boats, paddles, ...

Protection of athlete health law (N. 99-223 March 23<sup>rd</sup> 1999)

Specific doping regulations on French territory.

## COMPETITION VENUE MAP



## COMPETITION VENUE INFORMATION

The accreditation fees includes the following services :

- Athletes village with free internet access and electricity supply, refreshments and light snacks
- Physiotherapists and medical supports
- Canoe rental
- Canoe storage
- Equipment repair area
- Free transportation for start
- Free use of local public transportation means

The organising committee will provide shuttles from and to airports and train station upon request for all delegation. Please fulfil the form at the end of the bulletin if you needs one.

- Shuttle from airport (Nantes, Rennes, Brest) to Quiberon : 90 € by minibus (up to 8 people)
- Shuttle from Lorient (airport or train station) : 35 € by minibus (up to 8 people)
- Shuttle from Auray (train station) : free

The competition venue will be organised around the “Ecole Nationale de Voile et Sports Nautiques” (ENVSN). This place offers all services an organisation can dream of :

- Accommodations
- Meeting rooms
- Catering area
- And more over : a weather forecast station !

## ENTRIES

Accreditations types and fees

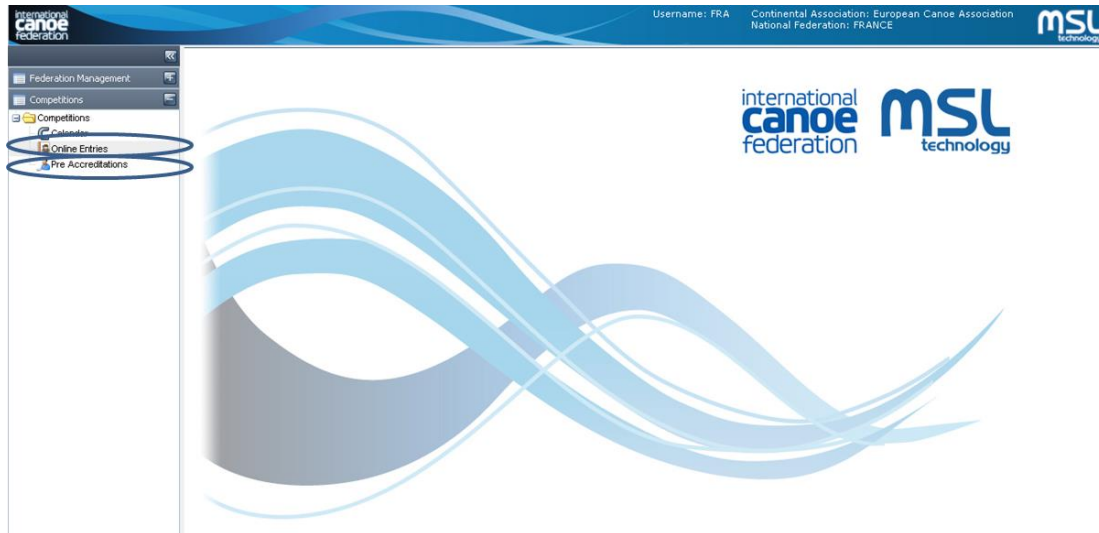
| QUALIFICATIONS                    | REMARKS   | COSTS                   |
|-----------------------------------|---|-------------------------|
| Athletes                          | Limited to registered athletes on ICF online entries        | 130 € per person        |
| Team leaders                      | 2 maximum per national federation                           | 130 € per person        |
| Team staffs                       | Unlimited   | 130 € per person        |
| ITO                               | According to the list edited by ICF                         | Free                    |
| NF President or Secretary General | To be validated by ICF<br>2 maximum per national federation | Free                    |
| NF Guests                         | Give access to VIP area on Saturday and Sunday              | 10 € per day per person |

### How to register ?

You need to enter your teams through the nominal entries via the ICF software SDP in order to validate them. With the nominal entries, all athletes will be automatically pre-accredited, so you do not need to re-enter them. Be careful, you need to enter all your staff members through pre-accreditations !



[Go directly to SDP](#)



Log with your NF login (provided by ICF) and go to “Online Entries”.

STEP 1 : Online Entries

You just need to complete all your athletes.

STEP 2 : Pre accreditations

You just need to complete all your staff (without athletes).

How to pay ?

Bank information coming soon

## APPENDIXES

### CONTACT DETAILS FORM

|                     |       |
|---------------------|-------|
| NATIONAL FEDERATION |       |
| NAME                | EMAIL |
| PHONE               | FAX   |

### TRAVEL DETAILS

|  |        |
|--|--------|
| Arrival date   |        |
| Departure date   |        |
| <b>Transportation means</b> <input type="checkbox"/> Plane <input type="checkbox"/> Train <input type="checkbox"/> Car<br><br>If you travel by plane or train, please indicate below the details about hours and number.   |        |
| Arrival place :  | From : |
| Flight/Train number :  |        |
| Departure place :  | To :   |
| Flight/Train number :  |        |
| Do you need a shuttle from and to airport/train station ? <input type="checkbox"/> YES <input type="checkbox"/> NO<br><br>Shuttle from airport (Nantes, Rennes, Brest) to Quiberon : 90 € by minibus (up to 8 people)<br>Shuttle from Lorient (airport or train station) : 35 € by minibus (up to 8 people)<br>Shuttle from Auray (train station) : free |        |
| STAMP / Signature  |        |
| City   | Date   |

VISA FORM

| Civility | Name | First name | Country of birth | Date of birth | Passport number | Expiration date | Status |
|----------|------|------------|------------------|---------------|-----------------|-----------------|--------|
|          |      |            |                  |               |                 |                 |        |
|          |      |            |                  |               |                 |                 |        |
|          |      |            |                  |               |                 |                 |        |
|          |      |            |                  |               |                 |                 |        |
|          |      |            |                  |               |                 |                 |        |
|          |      |            |                  |               |                 |                 |        |
|          |      |            |                  |               |                 |                 |        |
|          |      |            |                  |               |                 |                 |        |
|          |      |            |                  |               |                 |                 |        |
|          |      |            |                  |               |                 |                 |        |