



Information Bulletin N 2



2019 ICF Stand Up Paddling World Championships

Qingdao, China

www.Supworldchampionships.com

1. COMPETITION INFORMATION

1.1. ICF Prize Money: Minimum € 36,000 in the 6 Open hard boards events.

	Men	Women
Long Distance Race	€ 7000	€ 7000
Technical Race	€ 6000	€ 6000
Sprint Race	€ 5000	€ 5000

1.2. Additional support for top paddlers –

The 2 overall winners' men and women at the 2019 ICF SUP World Cup in Scharbeutz (GER) 7-8 September 2019 will be supported by the HOC as follow:

- € 800 contribution for flights;
- Free accommodation during the access period (21-27 Oct.2019);
- Free meals during the access period;
- Free Participation fee for the World Championships.

1.3. Preliminary Racing Schedule

October 25th – Sprint races:

- 8.00 am – Paddlers Meeting
- 9.00 am – Heats Sprint races
- 12:00pm – Public
- 2.00 pm – Semi-finals
- 4.00 pm – Finals Sprint races
- 5.00 pm – Medals Ceremony

October 26th – Technical races:

- 8.00 am – Paddlers Meeting
- 9.00 am – Heats Technical races
- 12:00pm – Public
- 2.00 pm – Semi-finals
- 4.00 pm – Finals Technical races
- 5.00 pm – Medals Ceremony

October 27th – Long distance races:

- 8.00 am – Paddlers Meeting
- 9.00 am – Long-distance Finals
- 2.00 pm – Inflatable Finals
- 4.00 pm – Public
- 5.00 pm – Medals Ceremony

1.4. ICF Development Camp 18 – 27 October

The aim of the development camp is to provide training access and promote the SUP racing around the World.

ICF and HOC will provide following support to the participating athletes in the Development camp:

- Free accommodation;
- Free meals;
- Free board rental;
- Free ground transport;
- Free Participation fee.

Interested athletes or NFs can apply at following email address hoichan.kwon@canoeicf.com not later than 15.09.2019. The places are limited. If selected athletes are more than the maximum number, the first come – first serve rule will apply.

1.5. ICF International Technical Officials (ITO) Course:

ICF ITO course will be run before/during the championships 23 – 27 October. Applicants will be trained and examined on the ICF SUP rules to become International Technical Officials (ITO).

Interested people can approach their respective National Federation which will place their application to ICF for the attention of Hoichan hoichan.kwon@canoeicf.com for SUP ITO course not later than 31.08.2019. The accommodation, meals, transportation, meeting room, and other fees together will be 40€ per person per day (200€ for the whole period).

2. Entries

2.1. Entry and registration:

The registration system is open now.

To enter visit www.Supworldchampionships.com . Payment must be made on-line at the time of registration.

For any questions or help in regards of entry please contact sdp@canoeicf.com .

More detailed information and explanations about the entry procedure will be published

immediately on the event website. Please consider that an early registration is necessary to receive soon a visa invitation letter from the Chinese organizers.

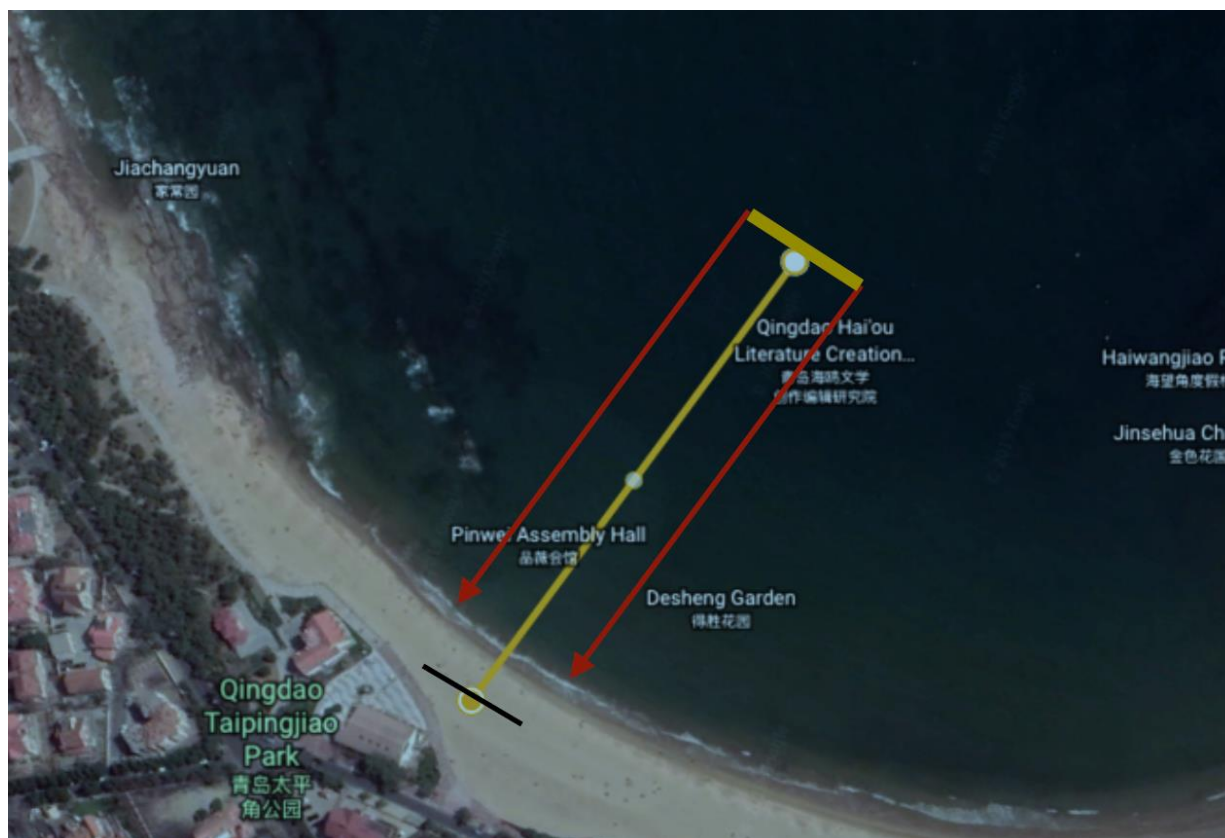
3. Venue and courses

3.1. Competition events and course:

3.1.1. Sprint race - approximate 200 - 250m course;

3.1.2. The Sprint course will be:

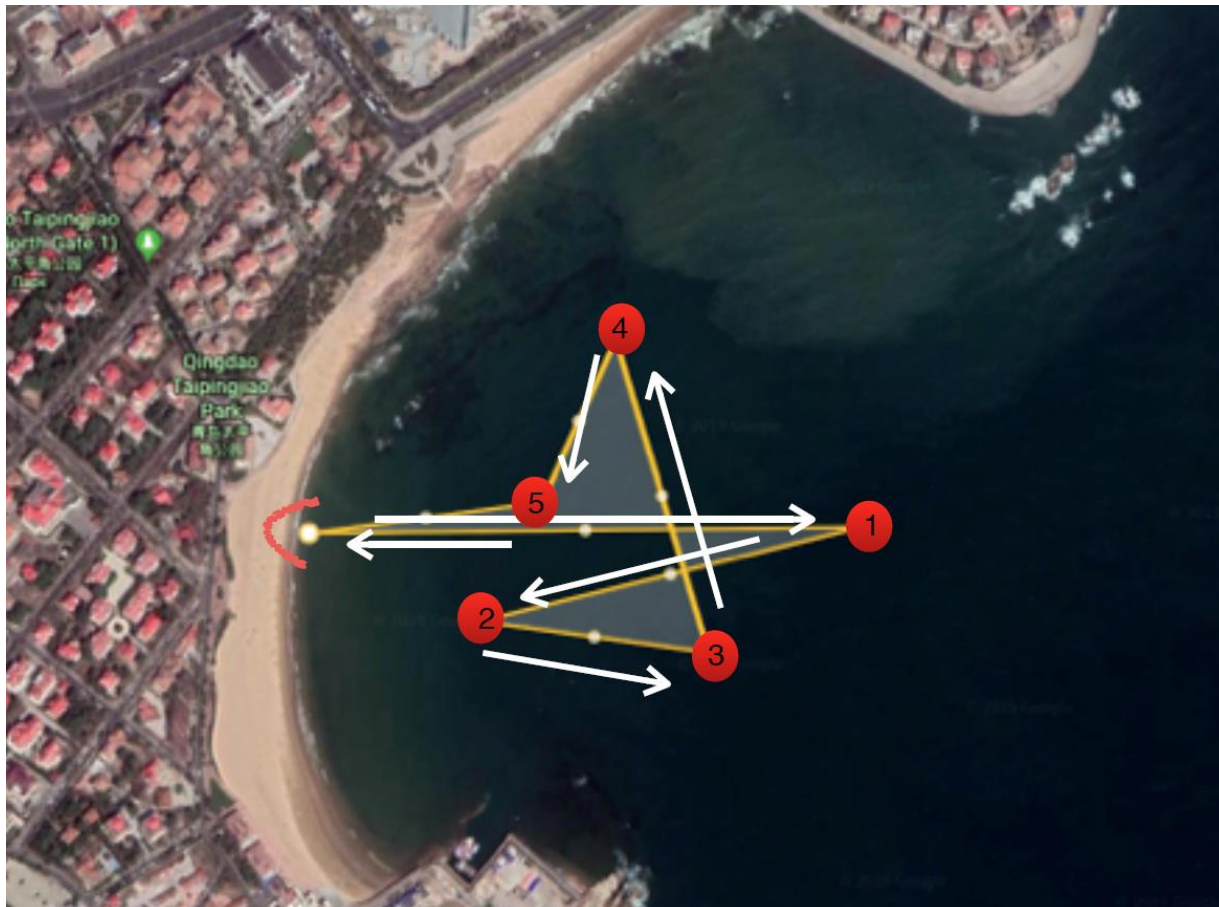
- The start will be between two buoys located 200-250 meters away from the beach;
- The course will be straight line from the start line to the beach;
- Finish will be a **Beach finish**;
- Athletes must dismount their boards near the shore and run (with their paddle in hand) to the finish;
- **Athlete must cross the finish line with the paddle in hand.**



3.1.3. Technical race – approximate 2.5km Course;

3.1.4. The Technical course will be:

- Beach start;
- First buoy #1 will be a **Right** turn (almost 180°) heading back to shore (slightly south from starting point);
- On buoy #2 **Left** hand turn (almost 180°) back out to sea;
- On buoy #3 **Left** hand turn (90°), heading north to buoy #4;
- On buoy #4 **Left** hand turn heading south to buoy #5;
- On buoy #5 **Right** hand turn towards the beach for the finish line;
- The final may consist of 2 laps (depending on weather and number of racers taking part);
- Finish will be a **Beach finish**;
- **Athlete must cross the finish line with the paddle in hand.**



3.1.5. The Long-distance race will be three (3) laps on the course – approximate 18km

3.1.6. The Long-distance Course – approximately 6km (each lap):

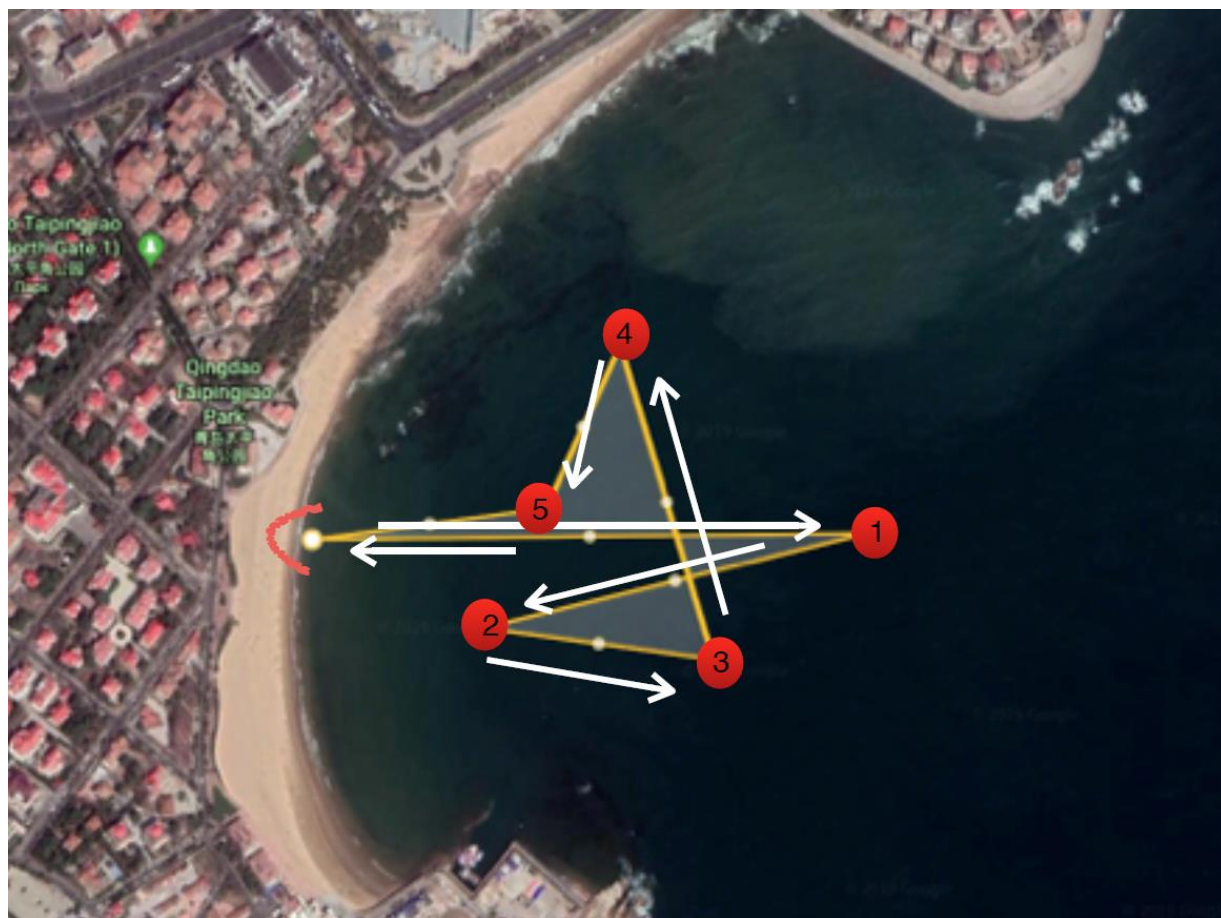
- Beach start;
- First buoy #1 (about 400-500 meters away) will be a **Left turn**;
- The rest of the buoys will be **Right** hand turns (buoy on athletes' right side of their bodies);
- Finish will be a **Beach finish**;
- **Athletes must cross the finish line with the paddle in hand.**



3.1.7. The Inflatable SUP race – approximate 2.5km Course;

3.1.8. The Inflatable SUP course will be:

- Beach start;
- First buoy #1 will be a **Right** turn (almost 180°) heading back to shore (slightly south from starting point);
- On buoy #2 **Left** hand turn (almost 180°) back out to sea;
- On buoy #3 **Left** hand turn (90°), heading north to buoy #4;
- On buoy #4 **Left** hand turn heading south to buoy #5;
- On buoy #5 **Right** hand turn towards the beach for the finish line;
- The final may consist of 2 laps (depending on weather and number of racers taking part);
- Finish will be a **Beach finish**;
- **Athlete must cross the finish line with the paddle in hand.**



3.1.9. The Public race (Inflatable) - will be between 500-750 meters depending on weather conditions;

3.1.10. The Public course will be:

- Beach start;
- First buoy #1 will be on the right side;
- On buoy #1 **Left** hand turn (around 120°)
- On buoy #2 **Left** hand turn towards the beach for the finish line;
- Finish will be a **Beach finish**;
- **Athlete must cross the finish line with the paddle in hand.**



3.2. Conditions:

- All racecourses distances are approximately and are subject to change depending on weather conditions or safety concerns that might accrue on race day.
- All SUP racers must know how to swim and are aware that SUP racing can be dangers. You will be required to sign a waiver upon registration.
- **PFD are required and mandatory for all races;**
- **A leash is required and mandatory for all races except Sprint race.**

4. Equipment

4.1. Length of the boards:

- Hard boards – SUP mono hull maximum 14 foot (4.26m) long;
- Inflatable boards – SUP mono hull maximum 12'6".

4.2. Boards hire:

Board manufacturers will have limited number of hard and inflatable boards for rent. It will be given on first come-first serve basis upon registration.

Shapes and sizes will differ based on provided boards from manufacturers.

4.3. Boards sea transport:

ICF will organise a container to transport boards from Europe to Qingdao. The boards will be collected at the ICF SUP World Cup in Scharbeutz/Germany. Transport price per board to Qingdao and back to Germany will be – 350€. Please book a container transport for your board before 01.08.19 to kontakt@prowave.de .

If you want to sea ship boards from USA, please send a request to kontakt@prowave.de If we receive reasonable number of requests for sea transport from USA, we will organise a container with similar conditions.

More information in regards of Boards see transport can find at https://www.canoeicf.com/sites/default/files/board_transport_sup_qingdao_newsletter_04.19.pdf .

5. Other

5.1. Airport transfer:

Airport transfer can be booked at the registration page. If you don't know your flight arrival time, you can add it at any time before the Entry due date (14 October).

For any questions or help in regards of local transport booking, etc. please write to Mrs. Jin on icf2019supworld@163.com.

5.2. Hotel booking:

Book accommodation directly with the official hotels on following links:

- Inter-Continental Qingdao :
<https://www.intercontinental.com/redirect?path=hd&brandCode=IC&localeCode=en®ionCode=1&hotelCode=DAOHA&PMID=99801505&GPC=H88&cn=no&viewfullsite=true>
Or contact Heifer, the sales manager: heifer.li@icqingdao.com ; +86 15898871205
- Zhonghang Xiangtong Yacht Club Hotel - Contact Li Ying, the sales manager for booking :
yxly011@126.com ; +86 18669707399
- Marine Holiday Inn - Contact Jiang Tianjiao for booking : carol18321@icloud.com ;
+86 18562832087

To be given the special rates for SUP World Championships, please use the following code: [2019ICFSUP](#)

More information for the accommodation can be found in the Bulletin 1.

5.3. Visa application:

Please check do you need a visa to enter China (some countries and some passports are in the visa exemption list). To obtain an invitation letter from the Chinese Canoe Association the application should be filled in during entry process, including upload of the passport 1st page copy.

Otherwise for Chinese visa can be applied directly to the Chinese embassy in the country of citizenship or can be applied via travel agent who knows the process of application.

Due to regulation limitation, invitation letter will only be issued to athletes. Other person like family and friends of athletes who need a visa shall apply for touring visa through Chinese embassy in the country of citizenship.

For any questions, requests, issues, please contact with Mrs Jin at CCA_event_hosting@outlook.com



6. Frequent questions:

Frequent questions and answers you can find shortly at the official websites:

www.Supworldchampionships.com ,

<https://www.canoeicf.com/stand-up-paddling-world-championships/qingdao-2019>

or the following email address icf2019supworld@163.com .