

INFORMATION BULLETIN 1
2021 ICF CANOE MARATHON WORLD CUP
VAIRES-SUR-MARNE, FRANCE
19TH TO 20TH JUNE



TABLE DES MATIERES

Introduction	3
General information	4
Key dates	4
Venue name/address	4
Key contacts	4
Location	5
How to access Vaires-sur-marne?	5
The venue in the city	6
Currency	6
Local attraction	6
Accommodation	7
Venue	8
Venue Course	8
Technical aspects of the course	8
Events & Competition schedule	8
Official training	8
Competition schedule	9
Entries & Participation fee	10
Entries, accreditation and deadlines	10
Participation Fee	11
Bank details	12
Visa requirements	13
Special regulation in france	13
COVID-19 Health and Safety Protocol	15
APPENDIX 1 – Visa application form	16
APPENDIX 2 - Transportation booking form	17

INTRODUCTION

The French Canoe Federation will be a key player in the event organization, with a long experience in hosting events. Through its different departments and fields of expertise, the FFCK will coordinate the actions of all the organization and all of its stakeholders.

In order to set up the best possible ICF event, the FFCK will organize the World Cup with his own events department. Also, other departments of the FFCK will be actors of the event, as the communication or partnerships departments.

Key personnel within the Organizing Committee :

	Name	Email Address
NF Contact person	Gianni CAPPAL	<i>gcappai@ffck.org</i>
HOC Competition Manager	Pierre MARTENS	<i>pmartens@ffck.org</i>
HOC Technical Organiser	Lionel FRAISSE	<i>lfraisse@ffck.org</i>



GENERAL INFORMATION

KEY DATES

28 th May 2021	Deadline for visa requirement
9 th June 2021	Closing of nominal entries
14 th June 2021	Opening of competition venue
From 14 th to 18 th June 2021	Official trainings Free trainings
17 th June 2021	Team leaders meeting – 18.15
18 th June 2021	ITO's meeting Official equipment control
19 th June 2021	Competition day 1
20 th June 2021	Competition day 2 Closing of the venue

VENUE NAME/ADDRESS

Olympic Stadium of Île de France,

Route de Torcy, 77360 VAIRES-SUR-MARNE

+33 1 60 20 02 04

events@ffck.org

KEY CONTACTS

Facebook: <https://www.facebook.com/ffcanoekayak/>

Instagram: https://www.instagram.com/ff_canoekayak/?hl=fr

Sport information: lfraisse@ffck.org

General information: events@ffck.org

LOCATION

HOW TO ACCESS VAIRES-SUR-MARNE?

You can reach the venue:

TO	PUBLIC TRANSPORT	CAR	BUS in VAIRES
Airport Orly	Orlyval toward Anthony 9€30 RER B toward Airport CDG to thâtelet-Les Halles station RER A toward Marne-La-Vallée Chessy to Noisiel station 25€ 1h45	45min	Bus 211 toward Terre-Ciel to Le Canal station OR Bus 421 toward Gare d'Emerainville Pontault-Combault, to Le Canal Walk 10 minutes
Airport CDG	Navette CDGVAL toward Terminal 2 Gare TGV (if needed) RER B toward Massy-Palaiseau to Gare du Nord station Transilien P toward Meaux to Vaires – Torcy station 17€ 2h	45min	
Gare du Nord	Transilien P toward Meaux to Vaires – Torcy 7€ 1h10	55min	
Gare Montparnasse	Metropolitan (underground) Line toward Porte de Clignancourt to Gare de l'Est station Transilien P toward Meaux to Vaires – Torcy station 7€ / 1h15	50min	
Gare de Lyon	RER A toward Marne-La-Vallée Chessy to Noisiel 7€ / 1h	45min	
Gare de l'Est	Transilien P toward Meaux to Vaires – Torcy 7€ / 1h15	55 min	
Gare Marne-La-Vallée Chessy	RER A toward Saint-Germain-en-Laye to Torcy station 5€ / 1h15	25min	
CAR since PARIS A4 toward Metz-Nancy, A104 toward Aéroport CDG, Exit 10 "Parc de loisirs de Torcy". Then follow "Stade Olympique d'Aviron et de Canoë-Kayak" or "Ile de loisirs de Vaires-sur-Marne".			

THE VENUE IN THE CITY



CURRENCY

The currency you can use in Vaires-sur-Marne is the euro (€).

LOCAL ATTRACTION

You can find on this website all of the activities that you cannot miss in the town of Paris (<https://www.getyourguide.fr/paris-l16/>).

ACCOMMODATION

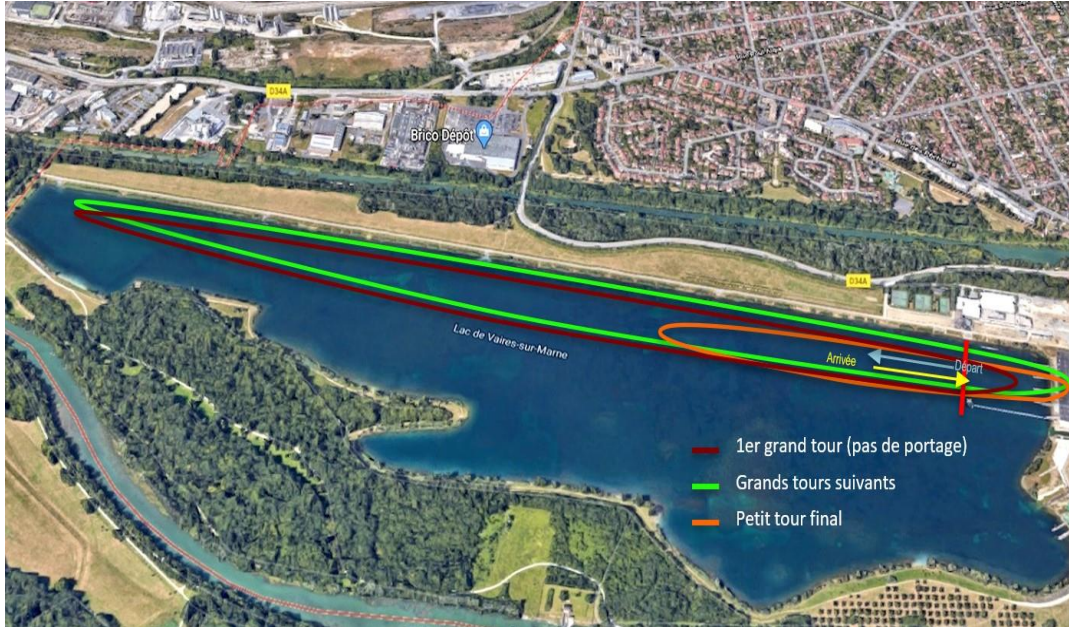
You can find on this website all information about accommodation in Vaires-sur-Marne.

Hotels	Distance / Temps	Cost/Night/Room/ Person
Ibis Budget Marne-La-Vallée **	4km – 8 minutes	52€
B&B Marne-La-Vallée Torcy **	6km – 10 minutes	56€
Ibis budget Chelles **	8km – 17 minutes	60€
B&B Marne-La-Vallée Bussy-Saint-Georges **	10km – 14 minutes	82€
Première Classe Marne-La-Vallée Bussy-Saint-Georges **	10km – 13 minutes	55€
Campanile Marne-La-Vallée Chelles ***	6km – 10 minutes	51€
City Residence Chelles ***	6km – 10 minutes	57€
Apparthotel Torcy***	6km – 10 minutes	61€
The Originals City Hôtel Codalysa Torcy ***	6km – 11 minutes	63€
Campanile Marne-La-Vallée Torcy ***	6km – 11 minutes	57€
Kyriad Marne-La-Vallée Torcy ***	6km – 12 minutes	68€
Ibis Marne-La-Vallée Champs-sur-Marne ***	8km – 13 minutes	66€
Comfort Hotel Chelles Marne-La-Vallée ***	8km – 16 minutes	70€
Campanile Marne-La-Vallée Bussy-Saint-Georges ***	10km – 14 minutes	69€
Mercure Marne-La-Vallée Bussy-Saint-Georges ****	11km – 16 minutes	119€

A shuttle system between hotels and venue will be possible **only** if you stay in one of these hotels (participation fees Package 2).

VENUE

VENUE COURSE



Red – First lap standard distance

Green - Laps with portage standard distance

Orange – Short distance laps and last small lap standard distance

TECHNICAL ASPECTS OF THE COURSE

Name of Course	2021 ICF Canoe Marathon World Cup
Competition Course length	2230 m ²
Competition course flow	Lake
Portage	Pontoons

EVENTS & COMPETITION SCHEDULE

OFFICIAL TRAINING

The competition venue will be open to all the National Federations and secured from the Monday 14th June 2021 to Sunday 18th June 2021.

COMPETITION SCHEDULE

Date	Time	PROVISIONAL TIMESCHEDULE/FINAL SCHEDULE AT TEAMLEADERSMEETING					Best time 2018
		Activity/Normal distance	Distance	Long laps	Short lap	Portages	
Wednesday June 16th	20:00	TEAMLEADERSMEETING BY VIDEO MEETING					
Saturday June 19	8:45	Opening Ceremony					
	09:00	K1 men juniors heat 1	3,4		3	2	
	09:30	K1 men juniors heat 2	3,4		3	2	
	10:00	Seniors men K1 heat 1	3,4		3	2	
	10:20	Seniors men K1 heat 2	3,4		3	2	
	10:40	Junior women C1 final	3,4		3	2	
	11:00	Junior women K1 final	3,4		3	2	00:17:13
	11:30	Junior men C1 final	3,4		3	2	
	12:00	Junior men K1 final	3,4		3	2	00:14:52
	12:20	Award ceremony JWC1, JWK1, JWC1, JMK1					
		LUNCH BREAK					
	15:00	Seniors men C1 final	3,4		3	2	00:16:06
	15:30	Seniors women C1 final	3,4		3	2	00:19:30
	16:00	Seniors women K1 final	3,4		3	2	00:15:34
	16:20	Award ceremony SWC1					
	16:30	Seniors men K1 final	3,4		3	2	00:13:45
	17:00	Award ceremony SWC1, SWK1 and SMK1					
Sunday June 20	09:00	Juniors men K1	22,6	6	1	5	1:53:07
	09:05	Juniors women K1	19	5	1	4	1:42:30
	09:10	Juniors men C1	15,4	4	1	3	
	09:10	Juniors women C1	11,8	3	1	2	1:28:26
						6	
	11:00	Seniors women K1	26,2	7	1	6	2:16:32
	11:05	Seniors men C1	26,2	7	1	6	2:21:21
	11:10	Seniors women C1	15,4	4	1	3	1:41:29
	11:10	Award ceremony JMK1, JWK1, JWC1 and JMC1					
						77	
	14:00	Seniors men K1	29,8	8	1	7	2:15:02
	14:05	Award ceremony SWK1 and SMC1					
	16:30	Award ceremony SMK1 and closing ceremony					

ENTRIES & PARTICIPATION FEE

ENTRIES, ACCREDITATION AND DEADLINES

Principles:

- Entries and accreditation requests must be made by the National Federation using the ICF's online entries system (SDP):

<https://icf.msl.es/icf/icf.jsp>

- For detailed instructions on how to submit entries, please read the [SDP user guide](#). Any questions or issues to entries or accreditation should be sent to sdp@canoeicf.com prior to the respective deadline.

SDP user guide

http://www.canoeicf.com/sites/default/files/nf_userguide_v2.2.pdf

Numerical entries:

- Numerical entries close: **19th of May.**

Nominal entries:

- Nominal entries close: **9th June 2021**
- Each athlete competing must be entered by name.
- Team personnel must also be submitted for accreditation at this time. These entries will be used to produce the accreditation cards for all teams.

Reminder:

- Entries or accreditation requests sent directly to the committee or the competition organiser will NOT be accepted.

PARTICIPATION FEE

Accreditation types and participation fees:

Package	Services	Price (€)
1 "Basic"	<ul style="list-style-type: none"> • Accreditation • Security • Medical services • Meals at the venue (lunch and diner) • Using the course for training • Miscellaneous services (including but not limited to snacks, water, internet, etc.) 	55€
2	Package 1 "Basic" and: <ul style="list-style-type: none"> • Transport to the course 	70€

The Organizing Committee can provide you transportation between the airports and the venue.

Price : 20€/person/trip

If you wish to benefit from this shuttle system, complete the transportation booking form (appendix 2).

BANK DETAILS

The payment of participation fees can be made by bank transfer before you reach Pau or on site upon your arrival by cash or bank card.

When your registration are closed you can ask us for an invoice at the following address : events@ffck.org

Bank details (for bank transfer) :

RELEVÉ D'IDENTITÉ BANCAIRE

Ce relevé est destiné à tout organisme souhaitant connaître vos références bancaires pour domicilier des virements ou des prélèvements sur votre compte



CR BRIE PICARDIE
VAIRES SUR MARNE
Tel. 0160205904 Fax. 0160206994

01/03/2021
00549

Intitulé du compte

FEDER. FRANCAISE DE CANOE
KAYAK
ET PARALYMPIQUE 2024 BASE NAUTIQ
ROUTE DE TORCY
77360 VAIRES SUR MARNE

Domiciliation

Code banque	Code guichet	Numéro de compte	Clé RIB
18706	00000	97536893656	32

IBAN FR76 1870 6000 0097 5368 9365 632

Code BIC (Bank identification code) - code SWIFT AGRIFRPP887

VISA REQUIREMENTS

France is a state-member of the European Union. The French Embassy in your country will provide you with all detailed information about visas. You will find details in the website on French Foreign Affairs Ministry (<http://www.diplomatie.gouv.fr/en/>).

Please inform in advance but no later than **28th May 2021** the Organising Committee together with the visa form whether your team needs entry visas to France.

These registration forms must be received by French Canoe Federation as soon as possible: events@ffck.org

You will find in appendix a visa form to fulfil.

SPECIAL REGULATION IN FRANCE

Evin laws (N. 91-32 January 10th 1991)

- This law forbids advertising for all alcoholic beverages (any level of alcohol including beer) and tobacco inside sports arenas (canoe slalom stadium is a sport arena). No advertising on tracksuits, boats, paddles ...

Protection of athlete health law (N. 99-223 March 23rd 1999)

- Specific doping regulations on French territory.

(ADEL) ALPHA CERTIFICATE

Anti-doping education

For the ICF World Championships, ICF World Cups and ICF Ranking Races and Continental Championships, every athlete, coach and support personnel must pass the relevant anti-doping online course on the Anti-Doping Education Learning platform (ADEL) corresponding to their role.

To access to the courses, please click <https://adel.wada-ama.org/learn>

- Athletes must complete the International-Level Athletes Education Program.
 - This course will give athletes information about the dangers of doping, the importance of anti-doping controls and promotes positive attitudes to avoiding doping.
- Coaches must complete the High Performance Coaches' Education Program.
 - This course provides Anti-Doping education for High Performance Coaches and emphasize on why clean sport matters and how it protects athletes' experiences and opportunities in sport.
- Medical professionals must complete the Medical Professional's Education Program.
 - This course will help medical professionals to learn about their role in protecting clean sport and how to operate in line with the anti-doping rules. It will provide information to effectively support athletes so that they meet their anti-doping roles and responsibilities and it will explain what is expected from you when you suspect doping.
- Other support personnel are required to complete the High Performance Coaches' Education Program which will give them the best overview of their responsibilities as support personnel.

When creating the account, please enter the correct identity information, as well as correctly select the sport 'Canoe', as the completion of the course will be recorded.

Athlete who have completed the online Anti-Doping education in the previous years are not required to complete again the course this year. If the language available on ADEL does not allow the athlete to properly complete the course, and to review the values of a clean sport, it can be allowed to pass the National Anti-Doping education course – if available.

Such alternative would need to be agreed beforehand by the ICF. Please contact michel.alarcon@canoeicf.com for this matter or any other question on Anti-Doping education.

COVID-19 HEALTH AND SAFETY PROTOCOL

Each Participating National Federation will be expected to have undertaken their own risk assessment and have a Covid-19 safety protocol in place and will require to have taken the precautionary measures prior to travel.

Each Participating National Federation is responsible for all costs (including medication) should any member of their Team be required to go into quarantine at any time from arrival to departure and/or be hospitalised or to return to the country of departure.

The ICF, the Host National Federation and the Host Organising Committee will try to support the concerned person as much as they can.

The ICF and the National Federation oblige all nations to provide a negative PCR test (less than 72 hours) before participating in the competition.

The ICF or the Host National Federation or the Host Organising Committee does not accept any responsibility for Covid-19 infection that occurs during or after the competition but will take all advised precautionary measures to reduce the risk of transmission.

Facemask will have to be worn at the competition venue at all times.

Disinfection stations will be located throughout the venue.

NOTE: Sanitary measures can be updated at short notice by the local authorities.

APPENDIX 1 – VISA APPLICATION FORM

Civility	Name	First name	Country of birth	Date of birth	Passport number	Expiration date	Status

STAMP / Signature	
City	Date

APPENDIX 2 - TRANSPORTATION BOOKING FORM

Arrival date	
Departure date	
Transportation means <input type="checkbox"/> Plane If you travel by plane or train, please indicate below the details about hours and number.	
Arrival place:	From:
Flight/Train number:	
Departure place:	To:
Flight/Train number:	
Do you need a shuttle from and to airport/train station? <input type="checkbox"/> YES <input type="checkbox"/> NO	
Please consult the organization <u>before 4th June 2021</u>	

Do you will travel with other delegation to come to the venue? If it's yes, with which one?