
2021 ICF Canoe Slalom World Cup Markkleeberg, Germany Team Leaders Meeting

1.	Welcome	2
2.	Roll call of National Federations.....	2
3.	Competition Officials	2
4.	Approval of the agenda	3
5.	Questions about «2021 Rules Appendices»	3
6.	ICF / MARKKLEEBERG 2021 COVID19 Protocol	3
7.	Information during the competition – WhatsApp group.....	3
8.	Canoe Slalom - Provisional start list review.....	3
9.	Course information	3
10.	Competition schedule.....	4
11.	Demonstration runs	4
12.	Course approval	5
13.	Canoe Slalom events – race information.....	5
14.	Extreme Canoe Slalom events – race information	9
15.	Key areas during competition.....	12
16.	Athlete’s video and photo for TV graphics and sport presentation	13
17.	Prevention of Harassment and Abuse in Sport (PHAS).....	13
18.	Other business.....	14
	Appendix 1 – Venue map.....	15

1. Welcome

2. Roll call of National Federations

Calculation of simple majority should a vote be required. Chief Official also has a vote and in case of a tied vote the Chief Official has the casting vote.

ANDORRA	AND	KAZAKHSTAN	KAZ
AUSTRALIA	AUS	MOROCCO	MAR
AUSTRIA	AUT	NETHERLANDS	NED
BELGIUM	BEL	NEW ZEALAND	NZL
BRAZIL	BRA	POLAND	POL
CANADA	CAN	PORTUGAL	POR
CROATIA	CRO	RUSSIA	RUS
CZECH REPUBLIC	CZE	SENEGAL	SEN
SPAIN	ESP	SLOVENIA	SLO
FRANCE	FRA	SWITZERLAND	SUI
GREAT BRITAIN	GBR	SLOVAKIA	SVK
GERMANY	GER	SWEDEN	SWE
HUNGARY	HUN	UNITED STATES OF AMERICA	USA
IRELAND	IRL	VENEZUELA	VEN
ITALY	ITA		

3. Competition Officials

Role	Name
Jury Chair	Thomas KONIETZKO (GER)
Jury Member	Titouan DUPRAS (MAR)
Jury Member	Daniele MOLMENTI (ITA)
Competition Manager	Christoph KIRSTEN (GER)
Chief Official	Jean Michel PRONO (ICF)
Chief Judge	Frank TROMPETER (GER)
Assistant Chief Judge	Sophie DELAGE (FRA)
Technical Organiser	Philipp REICHENBACH (GER)
Course designer nominated by the ICF	Sebastian SCHUBERT (GER)
Course designer nominated by the HOC	Frank ZIMMERMANN (GER)

4. Approval of the agenda

5. Questions about «2021 Rules Appendices»

https://www.canoeicf.com/sites/default/files/csl_2020_rules_appendices.pdf

6. ICF / MARKKLEEBERG 2021 COVID19 Protocol

<https://www.canoeicf.com/canoe-slalom-world-cup/markkleeberg-2021/covid-19>

key reminder: "Act as you want others to act"

- Face masks need to be either high quality manufactured masks with three layers, surgical masks or of higher standard (FFP2 etc.) without valves.
- Buffs/scarves etc. are not considered as face masks.
- All accredited persons **MUST** wear a face mask at all times when indoors or outside except when eating or drinking and for athletes, when they are on the water.
- The face mask **MUST** be worn over the mouth and nose.
- **Written warning will be given in case of not wearing the mask as requested. The 2nd warning will lead to an accreditation removal.**
- Departure test: see the attached Official Communication #3

7. Information during the competition – WhatsApp group

<https://planet.canoeicf.com/2021-ICF-CSL-MARKKLEEBERG>

8. Canoe Slalom - Provisional start list review

9. Course information

Name of Course	Kanupark Markkleeberg
Competition Course length	240m
Competition course drop	4.8m
Competition course flow	14m cumecs
Water regulation on course	Pumping system

10. Competition schedule

- The course is closed following the end of official training (Thursday 17.06.2021 at 14.45) until the end of the competition.
- Version 3 posted on ICF competition website on Thursday 17.06.2021 at 21.00.

11. Demonstration runs

A. Demonstrators / forerunners

Event		Start bibs	Demonstrators & forerunners
WK1		F1	Nele GOSSE
MK1		F2	Noah HEGGE
WC1	Left / right	F3	Nele BAYN
MC1	Right	F4	Hannes SEUMEL
WK1		F5	Stella MEHLHORN
MK1		F6	Fabian SCHWEIKERT
WC1	Left / right	F7	Zola LEWANDOWSKI
MC1	Left	F8	Lennard TUCHSCHERER

B. Heats course – Thursday 17.06.2021

14:45:00	17:00:00	Heats - Course construction	1	02:15:00	02:15:00
16:30:00	17:15:00	Heats - Course tuning with demonstration runners	1	00:45:00	00:45:00
17:15:00	17:31:00	Heats - full length demo run 1	8	00:02:00	00:16:00
17:31:00	17:41:00	Heats - Course approval	1	00:10:00	00:10:00
		Interval			00:09:00
17:50:00	18:06:00	Heats - full length demo run 2 & rehearsal	8	00:02:00	00:16:00
		Interval			01:24:00
19:30:00	19:30:00	Water OFF	1	00:00:00	00:00:00

C. Semifinal / final course – Friday 18.06.2021

16:30:00	18:00:00	Semi final / Final - Course construction	1	01:30:00	01:30:00
17:30:00	18:15:00	Semi final / Final - Course tuning with demonstration runners	1	00:45:00	00:45:00
18:15:00	18:31:00	Semi final / Final - full length demo run & rehearsal	8	00:02:00	00:16:00
18:31:00	18:41:00	Semi final / Final - Course approval	1	00:10:00	00:10:00
		Interval			00:09:00
18:50:00	19:06:00	Semi final / Final - full length demo run & rehearsal	8	00:02:00	00:16:00
		Interval			01:09:00
20:15:00	20:15:00	Water OFF	1	00:00:00	00:00:00

12. Course approval

- Call for nomination from the Coaches/Team Leaders to be an “observer” to the Course Approval Committee

Team leader representative	Vincent REDON (FRA)
----------------------------	----------------------------

- Course approval will take place immediately following the demonstration runs at the end of the course on the right bank.

13. Canoe Slalom events – race information

A. Course design timetable

- The course map will be distributed from the Sport Information Office Thursday 17.06.2021 at 15.00.

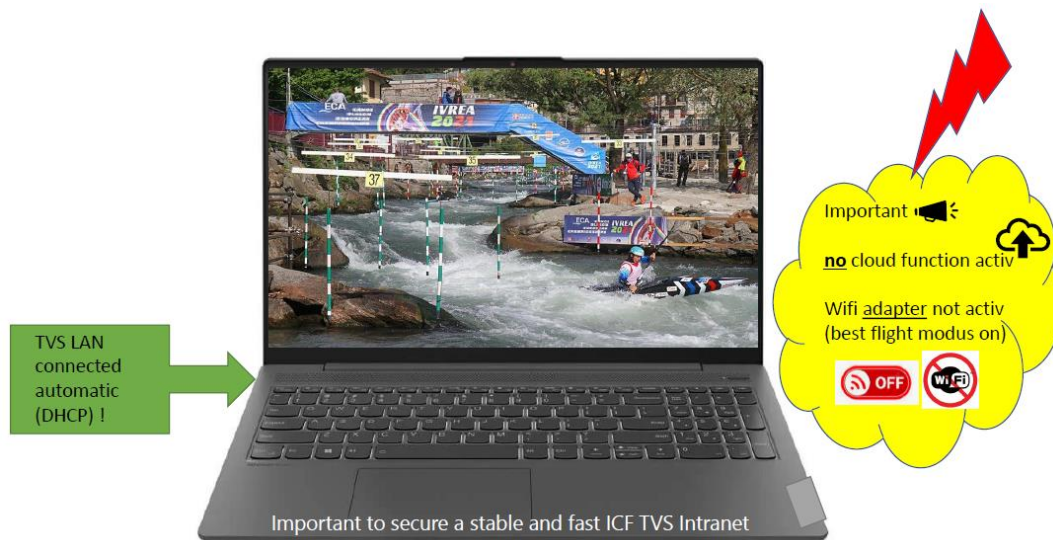
B. Bibs distribution

- CSL Competition bibs will be available from the Sport Information Office from 12.00 on the Thursday 17.06.2021. Training bibs have to be given back at the same time.
- The accreditation fee must be fully paid to receive competition bibs.
- A bib deposit of 50 Euro per set per nation is required on collection of the bibs.
- CSL Competition bibs must be returned to the Sport Information Office following the competition for the return of the deposit.
- The bibs are allocated in the following way:

WK1		WC1	
MK1	Top BLUE	MC1	Top RED

C. Technical Video Service for CSL events

- A TVS feed will be available for all competitions phases and both demonstration runs.
- Only the download solution will be available to avoid gathering in TVS tent.
- Each Nation tent will be equipped with their own download cable.
- Address to use to download videos: <http://cis.sivi>
- **It will be possible to test the TVS system from Thursday 17.06.2021 at 16.00.**
- **Reminder:**



D. Warm-up

- Warm up in the finish pool or on the lake.

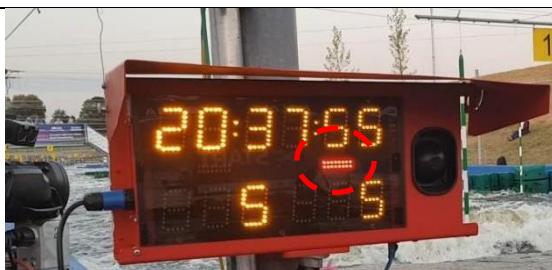
E. Pre-start procedure

- There will be a clock showing time of day facing the finish pool and the lake from the balcony railing of the restaurant.
- There will be no pre-start.
- The conveyor belt takes approximately 40 seconds.
- During the competition there should be only 3 athletes in the start pool including the athlete at the start position.

F. Start



- Athletes may move to the start position once the previous Athlete has broken the beam but must be at the start position 15 seconds before their start.
- The start position is located between the blocks in the start pool marked by a start backdrop.
- Athletes must start facing downstream.
- At the start, there will be a countdown clock (right bank) showing the time to start. There will be an acoustic signal (10 seconds before start - 4 shorts, 1 long - start).
- Athletes must start **within 3 seconds of** their start time:



Red light □ the athlete **can't** leave the start position



Green light □ the athlete **can** leave the start position

- The beam line is located at the top of the first drop.
- At all times, the athletes must follow the Starter's instruction, or they may be disqualified for the run.

G. Finish



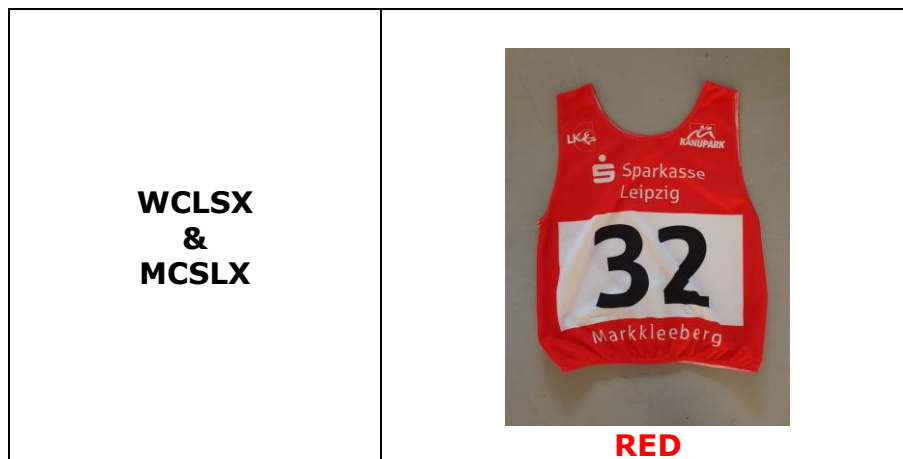
- The finish beam is marked by the two green poles on the banks and a banner "ZIEL".
- Athletes must exit via the stair on the left of the finish pool to pass through equipment control, kiss and cry and the mixed zone.
- During the finals, the leading athlete (only the leader) must proceed to the "Kiss and Cry" area located after equipment control where TV will interview them.
- There will be access to the broadcast feed in this area. If they drop out of the lead the new leaders will replace them.
- Athletes must not leave the finish zone until dismissed by the Equipment Control Judge once they are no longer needed for the ceremonies, anti-doping or equipment control.
- They then proceed via the mixed zone back to the Athlete area.

14. Extreme Canoe Slalom events – race information

A. Course design timetable

- Extreme Canoe Slalom course map (time trials & final phases) will be distributed at the Sport Information Office Friday 17.06.2021 at 15.00.

B. Bibs distribution



- For CLSX time trials:
 - Bibs will be available from the Sport Information Office from 12.00 on the Thursday 17.06.2021 with the Canoe Slalom bibs.
 - Bibs will be collected in the finish pool right after the time trials run.
- For CSLX final phases:
 - Bibs and **boat stickers (instruction to be distributed on Saturday evening)** will be distributed in the start area on the ramp just before the start.
 - CSLX bibs must be returned at the start after the athlete has finished the competition. For lost or not returned bib NF will be charged 50€

C. Time trials

- Time trials will be run with gates.
- Timing will be done via photocells (start and finish).
- Start is from the start platform.
- The start photocells will be positioned on the lower edge of the ramp.
- Finish line for time trials will be the same as used for CSL events and indicated on the course map.

D. Final phases

Pre-start procedure

- Athletes need to be at the start area 30 minutes prior to their heats to prepare their boats and receive their bibs and final instructions.
- Athletes may warm up in their own boat or a boat provided by the organiser.
- Access to start ramp will be from the right bank on side of the ramp.

Start Procedure

- Athletes should be settled in the start position on the ramp 1.5 minutes before their start time.
- They should then listen to the sports presentation where they will be introduced to spectators.
- During this time, they should face the TV camera. At all times they should follow the starters instructions.
- The start position is with paddle in one hand to allow athlete to push off to start.
- Boats will be held at the start position until the "ready" announcement by the starter.

Finish

- Finish line for heats/final phases will be indicated on the course map.
- After the finish, please go to the dedicated area indicated on the course design map.
- Please return the boat, spraydeck and bib to the start via the conveyor belt.
- HOC volunteers will be there to support you.

E. Technical Video Service for CSLX events

- Time trials: as per Canoe Slalom service.
- Final phases: more information will be distributed on Saturday evening.

F. Specific information

- CSL start position will be removed for time trials and final phases.

Rules reminder

Extreme canoe slalom rule changes approved by the ICF Board of Directors for the 2021 season:

https://www.canoeicf.com/sites/default/files/2019_canoe_slalom_competition_rules_-_chapter_16_2021.pdf

Gate negotiation (no change)

16.21.3 - The whole head and both shoulders of the athlete must cross the gate line in accordance with the correct side of the gate and the course plan.

Buoyancy jacket

16.3.1 - Athletes buoyancy jacket must comply with CSL articles 3.4, article 3.5 and all the buoyant material must be located in the vest above the waist.

Safety rules (new wording)

16.25 - SAFETY RULES [SR]

16.25.1 - Kayak to kayak contact is permitted.

16.25.2 - Athletes are not permitted to push or hold back other athletes or kayaks with their hands or paddles.

16.25.3 - Athletes are not permitted to deliberately reach across another Athlete with their arm or paddle, making contact with the athlete's body.

16.25.4 - Dangerous contact with another athlete's head or body that may result in a personal injury is not permitted.

16.25.5 - In all cases the situation is assessed by the judges.

16.25.6 - An athlete judged to break safety rules in a run will be ranked as last finisher (RLF).

Scoring and Result system

The scoring system has been updated:

- See article 16.22 for penalties – Fault (FLT) & Rank as Last Finisher (RLF) definition
- See article 16.27 for time trials results calculation
- See article 16.28 for final phases results calculation

15. Key areas during competition

See venue map attached in appendix 1

A. Enquiry / Protest desk

- The Enquiry desk is located in front of the OVR.

B. Equipment control

- Equipment Control is located next to the exit on the left side of the finish pool.
- Self-checking is open: Thursday 17.06.2021 from 8.30 to 15.30.
- Equipment control will be open each day 1h before the 1st boat starts.
- There will be post competition control and random checking during whole competition.

C. Medal ceremonies

- Location: see map in appendix 1
- Schedule: see competition schedule, after each session of final

D. Doping control station

- The doping control station is located in the changing room in the ground floor of the main building.
- Athletes will be notified for Doping Control in the finish area.

E. Special information for the National Federation tent

- Each tent will be disinfected by the HOC each evening.
- Do not leave food overnight in the tent.

16. Athlete's video and photo for TV graphics and sport presentation

As in previous season, the ICF is planning to continue to shoot a short video (8s without sound) of each athlete to be used during final phases.

To implement this, a video studio will be installed in the Accreditation office (gym).

A detailed schedule will be sent to all team leaders with the list of athletes requested to attend this session on Thursday 17.06.2021 (after the training session).

The ICF requests these athletes to attend this short shooting session (maximum 2 minutes) in their national uniform on Thursday respecting the provided schedule.

17. Prevention of Harassment and Abuse in Sport (PHAS)

A. ICF policy and statement

Prevention of Harassment and Abuse in Sport (PHAS) Policy is in place with the purpose of protecting the physical and psychological integrity of the athletes, the team officials, the ITOs and any other people related to the paddling family.

https://www.canoeicf.com/sites/default/files/icf_safeguarding_phas_policy.pdf

The ICF strongly condemns harassment and abuse in all forms at any time and is committed to preventing this conduct by acting diligently to avoid its occurrence, and inappropriate situations that may give rise to their happening.

B. The policy will be applied during ICF competitions

Suspected harassment and abuse must be immediately reported. The report form is available on the ICF website and will be treated with impartiality and confidentiality.

https://www.canoeicf.com/sites/default/files/icf_safeguarding_phas_report_form.pdf

Local regulations must be followed in all cases.

C. ICF PHAS officer during this competition

Report any offence to the ICF PHAS officer on site: MICHEL ALARCON, Michel.alarcon@canoeicf.com, ICF Paracanoe and Anti-Doping Manager

18. Other business

A. Training in Augsburg

- The course is still under construction and there is a fence around the course, you still can't walk inside.
- It is a restricted area.
- Training is not allowed for teams from outside, also for the German clubs.
- There is only one exception:
 - You must book for accommodation in the centrum and stay there overnight.
 - You will get a key to access and all the information which are necessary to stay safe on building site.
- Contact:
 - Michael Senft / Michael.senft@augsburg.de / +49 821 3249730
- More Information you will find here:

<https://www.augsburg.de/aktuelles-aus-der-stadt/detail/olympiapark-am-eiskanal-wird-gesperrt-1>

B. Tokyo 2020 videoconference

Due to several aspects (e.g. issue with internet in Markkleeberg, Tokyo 2020 finalising some key information), we will cancel the videoconference tomorrow to reschedule next **Tuesday 22 June at 12.00**. Your registration will be valid for this new time.

C. Ljubljana 2021

- The competition is scheduled.
- More information to be distributed end of next week.

Appendix 1 – Venue map

