

bid for...

21st Asian Canoe Sprint Championships 14th Asian Canoe Slalom Championships in October 2023, Tokyo

(2023 Asian Continental Qualifications)



Provisional Bulletin

Japan Canoe Federation

CONTENTS

1. COMPETITION INFORMATION.....	2
1.1 EVENT INFORMATION.....	2
1.2 VENUE	3
1.2.1 Sea Forest Waterway	3
1.2.2 Kasai Canoe Slalom Centre.....	5
2 LOGISTICS	7
2.1 ACCOMMODATION	7
2.2 TRANSPORTATION	8
3. USEFUL INFORMATION	9
A. ABOUT TOKYO	9
B. CLIMATE	9

1. COMPETITION INFORMATION

Japan Canoe Federation is willing to welcome Asian canoe athletes to the Tokyo 2020 Olympic venues for 21st Asian Canoe Sprint Championships and 14th Asian Canoe Slalom Championships in 2023, which will be Asian Continental Qualifications for the 2024 Paris Olympic Games. It will be a great opportunity to compete at the highest standard venues to progress to the Paris.

Sports and canoe are getting more attention of people in Japan. All athletes will be competing surrounded by enthusiastic spectators. It must become special opportunity and experience for athletes aiming for and progressing to the Olympic Games.

1.1 EVENT INFORMATION

Canoe Sprint

Name of the Event	21 st Asian Canoe Sprint Championships
Venue	Sea Forest Waterway
Location	Koto-ku, TOKYO
Competition Dates	October 2023

Canoe Slalom

Name of the Event	14th Asian Canoe Slalom Championships
Venue	Kasai Canoe Slalom Centre
Location	Edogawa-ku, TOKYO
Competition Dates	October 2023

1.2 VENUE

1.2.1 Sea Forest Waterway



Sea Forest Waterway

Sea Forest Waterway (SFW) is the venue of competition. This is a new facility in the Tokyo Bay Zone, which is expected to attract vast public interest and involvement, both during the Tokyo 2020 Olympic Games and as a sporting recreational facility legacy for the city in the years to come.

The field of play at the Sea Forest Waterway is a regatta course measuring 2500m in length, with a race lane depth of 5m at the shallowest point. It includes nine (9) lanes and have start lines at 200m, 500m and 1000m, meeting ICF Canoe Sprint Competition Rules.

Venue Features



Still and fair water



Accessible four (5) pontoons



Training room in the boathouse



Inside boatracks



Outside preparation space around the boathouse



Office and lounge connected with the grandstand



2000 seats in the grandstand

1.2.2 Kasai Canoe Slalom Centre



Kasai Canoe Slalom Centre

Kasai Canoe Slalom Centre is the venue of competition. This is a new facility in the Tokyo Bay Zone, which is expected to attract vast public interest and involvement during the Tokyo 2020 Games, and to do so as a sporting recreational facility legacy for the city in years to come.

The field of play at The Kasai Canoe Slalom Centre consists of competition course and warm-up course. The competition course is 250m of white water, with a total drop of 4.5m from the start line to the finish line. The warm-up course connects the competition course and consists of 185m of flowing water. The competition course will be presented in accordance with ICF Canoe Slalom Competition Rules.

Venue Features



Artificial Course with tap water



Constant flow by pumping system



Competition course



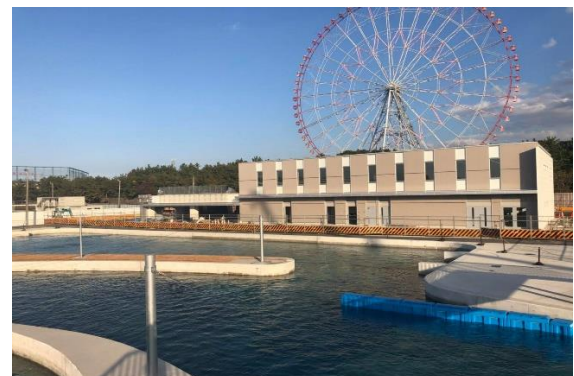
Warm-up course (in-line pump) inside venue



Flat water



Conveyor



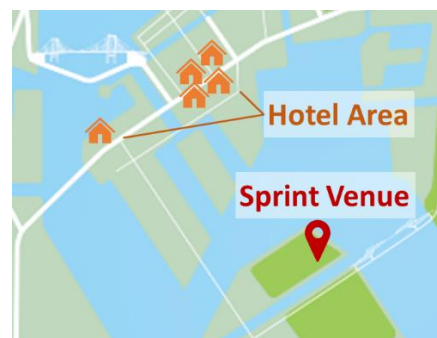
Administration Building (shower, gym, etc)

2 LOGISTICS

2.1 ACCOMMODATION

For Canoe Sprint

The main hotel area is only 15 minutes away from the Sea Forest Waterway. There are various choices of hotel from affordable price to luxury class.



Hotel Showcase



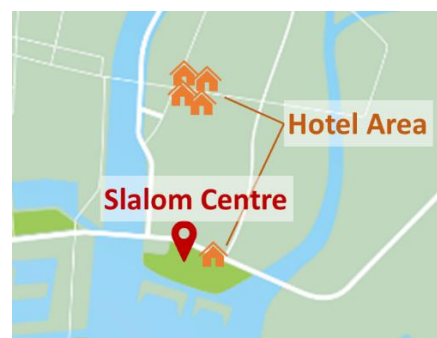
Location : Ariake, Koto-ku, Tokyo – Japan

Distance from the competition venue : 7.1 km / 13 min by car

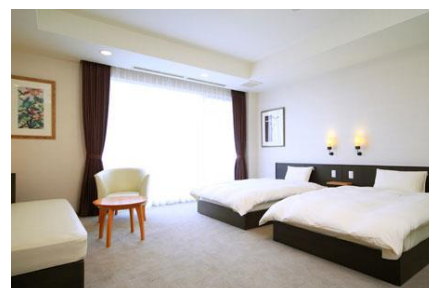
Twin Room : \$60~ per night per person

For Canoe Slalom

The main hotel area is only 10 minutes away from the Kasai Canoe Slalom Centre. There are various choices of hotel from affordable price to luxury class.



Hotel Showcase



Location : Rinkai-cho, Edogawa-ku, Tokyo – Japan

Distance from the competition venue : 0.8 km / 10 min by walking

Twin Room : \$60~ per night per person

2.2 TRANSPORTATION

Tokyo is the friendly city for international travelers. The main arrivals & departures (A&D) for the events will be operated from Haneda International Airport (HND) and Narita international airport (NRT). Both airports are convenient to access to the venues.

Sprint Zone

From Haneda: Distance: 12 km / 20 min by car

From Narita: Distance: 65 km / 60 min by car

Slalom Zone

From Haneda: Distance: 20 km / 20 min by car

From Narita: Distance: 60 km / 45 min by car



Haneda International Airport (HND)
4-3 Haneda-Kuko, 2-Chome, Ota-Ku, Tokyo 144-0041
Phone: +81 3-6428-0888
(information desk ;24hour open)
➤ Distance from Venue : 21km

Narita international airport (NRT)
Narita-shi, Chiba 282-8601
Phone: +81 476-34-8000
(information desk ;24hour open)
➤ Distance from Venue : 61km

3. USEFUL INFORMATION

A. ABOUT TOKYO

Japan is situated in Northeastern Asia between the North Pacific and the Sea of Japan. The area of Japan is 377,944m². It consists of up to 6,852 islands, including four of the larger main islands. The population is over 126 million and most Japanese reside in densely populated urban areas such as Tokyo.

One of Japan's attractions is the beautiful nature found across the country. The variety of scenery gives Japan a completely different impression with each season. For centuries, the seasons have been deeply related to daily Japanese life in many ways, leading to a great sensitivity to seasonal occurrences across the population. On the surface, Japan appears exceedingly modern, but travelling around it offers numerous opportunities to encounter the country's traditional culture. Japanese culture such as Zen rock gardens, Matcha, and Sushi keeps attracting millions of visitors each year and is fast spreading its popularity around the world.

Tokyo is one of Japan's 47 prefectures, and its capital. It consists of 23 central city wards, multiple cities, towns and villages west of the city center. The Izu and Ogasawara Islands are also part of Tokyo.

Today, Tokyo offers a seemingly unlimited choice of shopping, entertainment, culture and dining to its visitors. The city's history can be appreciated in many excellent museums, historic temples and gardens. Contrary to common perception, Tokyo also offers numerous attractive green spaces in the city center and within relatively short train rides to the outskirts.

B. CLIMATE

Autumn season especially October in Japan is the best season for competing Canoe sports. Average temperature ranges from a low 14.2 °C to a high 21.5 °C in a day. Average humidity is 68%.

