

2026 ICF Canoe Slalom World Cup Tacen Ljubljana, Slovenia

Competition Guide

Contents

1. Introduction.....	1
2. Competition officials	1
3. Canoe Slalom Rules and Rules Appendices	1
4. Official communication channels.....	2
a. ICF Canoe Slalom events communication channels	2
b. !! 2026 ICF Canoe Slalom World Cup 1 Tacen-Ljubljana - Official communication channel.....	2
5. Pre-race requirements (checklist).....	2
a. Anti-doping education program	2
b. Entry list checking	3
c. Official training sessions requests	3
d. Guidelines for advertising on equipment.....	3
i. Generic guidelines	3
ii. !! Specific guidelines for the 2026 ICF Canoe Slalom World Cup 1 Tacen-Ljubljana	3
e. Athlete's headshot.....	3
f. Technical Video Service	4
6. Venue information	4
a. !! Course information	4
b. !! Venue layout.....	5
c. !! NF areas	5
d. !! Green box studio.....	5
e. !! Equipment control.....	5
f. !! Doping control	6
g. !! Enquiry/Protest desk & TVS Emergency download desk	6
h. !! Medal ceremonies	6
7. Competition information	6
a. !! Official training schedule	6

b.	!! Competition schedule	6
c.	!! Demonstration runs	7
i.	!! Demonstrators / Forerunners list	7
ii.	!! CSL Course construction – Friday 29th May	7
d.	!! Course map distribution	7
e.	Course approval	7
i.	Generic rules	7
ii.	!! 2026 ICF Canoe Slalom World Cup Tacen course approval information 7	7
f.	!! Bib distribution	8
8.	Canoe & Kayak events	8
a.	!! Pre-start procedure	8
b.	Start	8
i.	Generic rules	8
ii.	!! Specific rules	9
c.	Finish	9
i.	Generic rules	9
ii.	!! Specific rules	10
9.	Kayak Cross events	10
a.	Pre-start procedure	10
i.	Generic rules	10
ii.	!! Specific rules	10
b.	Start procedure	11
i.	Generic rules	11
ii.	!! Specific rules	11
➤	!! Kayak Cross Individual	11
c.	Finish	12
i.	Generic rules	12
ii.	!! Specific rules	12
d.	Rules reminder	12
10.	ICF topics	12
a.	2026 ICF Junior & U23 World Championships Krakow	12
b.	2026 ICF CSL World Championships Oklahoma	12
i.	ICF policy and statement	13
ii.	The policy will be applied during ICF competitions	14
iii.	ICF PHAS officer during this competition	14

iv.	Reference and tools	14
11.	Appendices	15
a.	!! Appendix 1 - Venue Map	1
b.	!! Appendix 2 – Demonstrators / Forerunners	1
i.	Canoe and Kayak events	1
➤	Demonstration	1
➤	Forerunners	1
ii.	Kayak Cross events	1
➤	Rehearsal (2 races)	1
➤	Kayak Cross Individual – Forerunners	1
➤	Kayak Cross– Forerunners	1
c.	!! Appendix 3 – Bib design allocation	2
i.	Forerunners	2
ii.	CSL Individual events	2
iii.	Kayak Cross Individual	2
iv.	Kayak Cross elimination phase	2

1. Introduction

The ICF is delighted to welcome you for this 2026 Canoe Slalom World Cups season.

In this Competition Guide, you will be able to find generic information that apply for the whole season. In addition, as soon as the World Cup organizer and ICF have settled all the details regarding this specific competition, an updated Competition Guide will be sent with all the generic and specific information.

If you have any questions, ICF topics or specific to the event, please contact the person in charge, referred in the following tab:

Role	Name	Contact details
CSL Committee Chair	Richard Fox	richard.fox@canoeicf.sport
CSL Committee members Event managers	Sue Natoli	sue.natoli@canoeicf.sport
	Alena Maskova	alena.maskova@canoeicf.sport
ICF staff - Technical manager	Manon Bocquet	manon.bocquet@canoeicf.sport
Competition Manager	Jakob Marušič	jakob.marusic@kajak-zveza.si

2. Competition officials

Role	Name
Jury Chair	TBC
Jury Member	TBC
Jury Member	TBC
Competition Manager	Jakob MARUŠIČ (HOC)
Chief Official	Sue NATOLI (ICF)
Chief Judge	Siim PEETRIS (ICF)
Technical Organiser	Peter Gale
Course designer nominated by the ICF	TBC (ICF)
Course designer nominated by the ICF	Kristina PETROVIC (HOC)

3. Canoe Slalom Rules and Rules Appendices

This competition will be run under the [ICF Canoe Slalom Rules](#) and [Appendices](#) and according to the specific information listed in this Competition Guide.

Any decision which could be voted during the Team Leader Meeting will be updated in the Competition Guide before the start of the competition.

4. Official communication channels

a. ICF Canoe Slalom events communication channels

ICF Canoe Slalom - WhatsApp group: [official link](#)



b. **!!** 2026 ICF Canoe Slalom World Cup 1 Tacen-Ljubljana - Official communication channel



5. Pre-race requirements (checklist)

a. Anti-doping education program

All athletes, coaches, and support personnel must have completed the relevant anti-doping online course on the WADA Anti-Doping Education Learning platform (ADEL) corresponding to their role. The certificates showing completion should be sent by each National Federation to sue.natoli@canoeicf.sport. Previous certificates are still valid for this season. There is no need to repeat the program unless the person's role changes (e.g. athlete becoming coach).

Accreditations will not be issued until the certificates are marked off.

More information on [ICF website](#)

[Link](#) to access ADEL program

b. Entry list checking

Once the team leader arrives on the competition site, they must go to the accreditation office to check:

- the entry list per nation and notify any modifications
- the national anthem
- the national flag

c. Official training sessions requests

If any NF has a specific request concerning the official training sessions for a competition, these ones must be sent by email to the ICF Technical manager: [Manon Bocquet](#) before the numerical entries' deadline (45 days minimum prior to the event). No requests will be considered after that deadline.

The ICF team will try to answer at their best to those requests when building the official training schedule. Do not consider that a request sent is officially stated.

d. Guidelines for advertising on equipment

i. Generic guidelines

For canoe slalom boats, ICF Nation and athlete's name stickers are mandatory. Further information can be found in the [ICF guidelines for advertising trademark identification on equipment](#) document.

For Kayak Cross boats, only the Nation Sticker will be required. It has to be placed freely in a suitable place in front of the cockpit. The actual location may vary depending on the model of the boat. The Nation sticker is the same dimensions as for the Canoe Slalom boats.

ii. **!! Specific guidelines for the 2026 ICF Canoe Slalom World Cup 1 Tacen-Ljubljana**

The sticker of the sponsor of the competition must be placed under the country code sticker as follows:

Event	Type of sticker
MK1	Triglav
WK1	HSE
MC1	HSE
WC1	HSE

e. Athlete's headshot

The ICF TV will shoot a video (8s without sound) of athletes for sport presentation. All the athletes should attend this short shooting session (maximum 2 minutes) in their team uniform (medal ceremony uniform).

For each event of the season, a specific planning will be shared and organized over the official training schedule.

f. Technical Video Service

A TVS feed download solution will be available for all events and demonstration runs.

ICF TVS manager: **Hans Peter WEISS**

a) !! Cloud solution

The TVS cloud solution is now the only way to access the TVS files. Each NF must register on the [2026 Canoe Slalom TVS management form](#) to indicate which person from the team will get access to the Dropbox folder for downloading the videos (one person per nation, one link sent for the whole season). Teams who do not register through that form could not receive the link and they will not be able to access the TVS feed.

- To connect to the dropbox folder, simply click on the link receive by email.
- NF TVS manager can visualize directly the videos on the Dropbox webiste. All the files of a run (full run and gate line cameras) are available between 60 and 90 sec after the athlete cross the finish line.
- To download the files locally on your computer, or to visualize the files online no Dropbox subscription is needed. The payment is necessary only if you want to store more than 2Gb of files on a Dropbox account.

No dedicated internet connection will be provided by the HOC. If the NF wants to secure a fast internet access locally, they have to manage their own internet access solution (4g/5G Sim card, Starlink...).

b) !! Backup solution

In case of issues using the TVS cloud solution, a backup option is available at the enquiry desk. There, the TVS managers under the supervision of the ICF TVS manager, will be able to plug their own device via a RJ45 wire and download the files needed. Keep in mind that this backup solution is limited. Access will be granted for a short period of time and the priority will be given to NF having athletes accessing to the next competition phase on that day.

For any question or assistance regarding TVS, please contact: tvsl@canoeicf.com.

6. Venue information

a. !! Course information

Name of the course	TACEN KAYAK CENTER
Competition course length	250 m
Competition course drop	5,5 m
Competition course flow	15 m3/s
Water regulation on course	Automatic gate

b. !! Venue layout

A venue map is attached in Appendix 1.

c. !! NF areas

- The NF area is in the garden, with the entrance from the road near the start.
- No extra tents can be installed in the NF area
- NF parking is located on the grass area above the Boathouse. Parking is only permitted with a valid parking card, which will be distributed through the Sport Info Office.
- The NF area is accessible from Tuesday 25th of May to Sunday 31st of May from 7:00am to 7:00 pm.

Power distribution

Be aware that the power in each NF area is limited to 200 W.

- Please make sure that your electrical equipment is reliable and do not create any shortcuts or overload on the main network during the competition.

Wireless routers

Wireless routers may be used if they are NOT within the following frequency:

- 5785 GHz, band width +/- 20 MHz
- 5825 GHz, band width +/- 20 MHz
- At no time should any wireless router system be connected to the computer which is connected to the TVS LAN cable
- All devices, including any wireless routers, must be named with National Federation code and device number e.g. AUS1, AUS2, AUS3 – unnamed devices will be removed from the system.
- Any team found to be using a device affecting the competition will have power removed to their compete system.

d. !! Green box studio

- Location: the first floor of the wooden tower near the bridge
- Timing: open on Wednesday 27.05.26 from 14:00 to 18:00 and Thursday 28.05.2026 from 09:00 to 13:00.
- Athletes must wear their team uniform (medal ceremony uniform).
- A dedicated schedule and guidelines will be shared on the Team Info Webpage.
- The athlete will shoot their athlete's headshot for race introduction and their ICF profile photo.

e. !! Equipment control

- Equipment Control is located under the tent, next to the exit on the left side of the course.
- Self-checking is open: Thursday 28th May from 9:00 to 16:30.
- Equipment control will be open each competition day 1h before the 1st boat starts.
- In Canoe and Kayak event and in Kayak Cross Individual: post competition control and random checking.

- In Kayak Cross, during elimination phases: pre-competition.

f. !! Doping control

- Location: **room behind the boathouse at the clubhouse above the start.**
- Athletes will be notified for Doping Control in the finish area.
- **Passports or ID** are required for Athletes selected for doping control.

g. !! Enquiry/Protest desk & TVS Emergency download desk

- Location: **in front of the OVR.**

h. !! Medal ceremonies

- Location: **award area in the middle of the course**, see map in Appendix 1.
- Schedule: see competition schedule, after each session of final.
- Uniform drop out: the **first floor of the wooden tower near the bridge**
- Athletes involved in the Finals for both Canoe and Kayak events should bring their national uniform to the medal ceremony preparation area. There will be boxes there to place the uniform in. There is only a short time between the end of the competition and the medal ceremonies.
- Athletes involved in the **finals of Kayak Cross Individual and Kayak Cross events** will wear their **competition gear** on the podium.

7. Competition information

All the information concerning the competition are available and updated online on the dedicated ICF event Team Info webpage: [2026 ICF Canoe Slalom World Cup Tacen](#).

a. !! Official training schedule

- Canoe and kayak training sessions on **Monday till Thursday**.
- Kayak Cross training sessions on **Wednesday, Thursday and free sessions are open on Saturday and Sunday**.
- Exact timings and updates are available on the [2026 ICF Canoe Slalom World Cup Tacen-Ljubljana – Team Info \(official training schedule\)](#).

b. !! Competition schedule

- The course is closed following the end of official training (**Thursday 28.05.2025 at 19:30**) until the end of the competition – except for the Kayak Cross free training sessions on **Saturday 30th from 17:30 to 19:00** and **Sunday 31st from 08:00 to 09:00**.
- The competition schedule version 3 will be posted on the dedicated [ICF event Team Info webpage](#) on **Thursday 28.05.2026 by 10:00** and spread on the WhatsApp Group.

- Note that during the Canoe and Kayak Finals, the start interval is 2'30" and there are two breaks of 2min per final, after the 4th and the 8th athletes on the final start list.

c. !! Demonstration runs

i. !! Demonstrators / Forerunners list

The list of forerunners is available in Appendix 2.

ii. !! CSL Course construction – Friday 29th May

CSL COURSE CONSTRUCTION					
7:00:00	8:30:00	CSL - Course construction			1:30:00
8:30:00	9:15:00	CSL - Course Tuning			0:45:00
9:15:00	9:20:00	Course review with technical manager			0:05:00
9:20:00	9:25:00	Course approval			0:05:00
		Interval			0:10:00
9:35:00	9:51:00	Full length demo run rehearsal	8	0:02:00	0:16:00

d. !! Course map distribution

The Kayak Cross course map will be available on **Monday 25.05.2026** on the [Team Info](#) webpage.

The canoe and kayak slalom course map will be posted on **Thursday 28.05.2026** after the **last training session** on the dedicated ICF event Team Info webpage and spread on the WhatsApp Group.

e. Course approval

i. Generic rules

The ICF wants to remind you that the course designers are:

- Selected from a pool of people skilled enough and proposed by the NF,
- Are ITOs, which means independent from any NF during the competition.

Any pressure or kind of harassment towards the course designers, as for any ITOs, may lead to sanctions.

ii. !! 2026 ICF Canoe Slalom World Cup Tacen course approval information

National federations feedback about the course designs can be reported to the ICF Technical manager, to be integrated into the Course Approval process.

ICF technical manager in charge: **Manon Bocquet**

Feedback will be accepted from only one representant per federation on **Friday 29.05.2026** from **09:15 to 09:20** at the bridge river right at the middle of the course.

f. **!! Bib distribution**

The full list of the bibs per event is available at Appendix 3.

- CSL Competition bibs will be available at the Sport Info Office from 14:00 on Thursday 28.05.2026.
- The accreditation fee must be fully paid to receive competition bibs.
- A bib deposit of 100 Euro is required on collection of the bibs. It can be paid by cash only.
- CSL Competition bibs must be returned to the Sport Information Office following the competition for the return of the deposit.
- For Kayak Cross Individual, bibs will be picked up at the Race office from 16:00 on Saturday.
- For Elimination phases the numbered and coloured bibs will be distributed individually at the start area.

8. Canoe & Kayak events

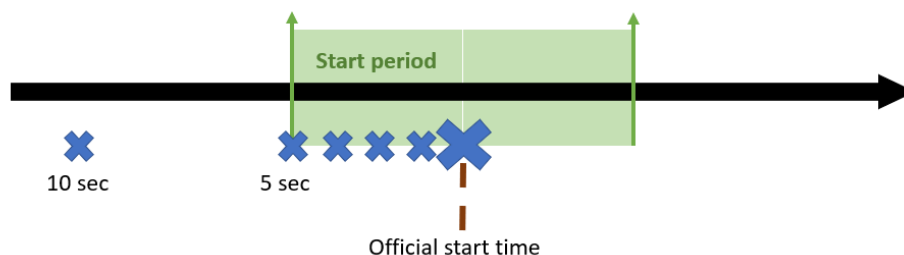
a. **!! Pre-start procedure**

There will be a clock, facing into the warm-up area above the start showing race time and the next athletes to start.

b. Start

i. Generic rules

- At all times, the athletes must follow the Starter's instruction, or they may be disqualified for the run.
- At the start, there will be a countdown clock showing the time to start.
- There will be an acoustic signal (10 seconds before start, and then from 5 seconds before start - 4 shorts, 1 long - start).
- Athletes may start 5 seconds either side of their official start time which is signified by the long beep on the start clock.



ii. **!! Specific rules**



- The starting boat must be **alongside the pontoon facing upstream in front of the partners' panel.**
- The beam line is **approx. 40 m after the bridge**
- Athletes may move to the start position once the previous Athlete has broken the beam but must be at the start position 15 seconds before their start.

c. Finish

i. Generic rules

- During the finals, the top three athletes are required to proceed to the **"Kiss and Cry"** area, located after the equipment control zone, where they will be interviewed by television broadcasters.
- Athletes must remain in the finish zone until formally dismissed by the Equipment Control Official, once they are no longer required for ceremonies, anti-doping controls, or equipment control.
- They will then proceed through the mixed zone.
- Athletes are required to wear their competition bib in the mixed zone for identification purposes.

ii. **!! Specific rules**



- The finish beam will be marked by two Finish markers on each bank
- All athletes must exit via the stairs located on the **left** after the finish line side to pass through equipment control, kiss and cry and the mixed zone.
- Returning from the finish line to the athlete village is from the mix zone around the island to the start above the weir, and then on the water above the start to the right bank, or via the stairs on the right side behind the OVR via flat water channel. Passage with boats through the venue is not permitted.

9. Kayak Cross events

a. Pre-start procedure

i. Generic rules

- Athletes need to be at the pre-start area prior to their start to prepare their boats (and equipment control during the Elimination phase), and receive any final instructions (coloured bibs distribution, choosing their start lane).
- Volunteers will be there to help your athlete if needed on the ramp.

ii. **!! Specific rules**

- The path to the pre-start area and the startramp is by the bridge at the top of the course, or by crossing downstream from the course.
- **It's FORBIDDEN to run down the first drop during a kayak cross training session or during the competition.**



b. Start procedure

i. Generic rules

- An automatic start machine will be used for all phases.
- At all times the athletes should follow the starters instructions.
- The start time for Kayak Cross Individual will be triggered by photocell.
- At the start, a Pre-Start Official will inform your athlete if they have progressed.
- When an automatic starting mechanism is used, the athlete must start with both hands on the paddle, positioned alongside the kayak. The front hand must be placed over the middle of the boat on one side, in contact with the boat or the spraydeck.



- The start orders will be the following ones:
 - 1) "In position" => the athletes must place their paddle in the start position.
 - 2) "Ready" => the athletes wait in steady position; no movement is allowed following the "Ready" command.
 - 3) The platform will tilt to indicate the start. The starter will not say "Go".

ii. **!! Specific rules**

➤ **!! Kayak Cross Individual**

- Athletes must start from **lane 2** on the platform for the Individuals (**second lane from the upstream**)
- The start interval is **60 seconds**; athletes should **get in their boat directly on the startgate**. There will be **volunteers to assist them if needed**.

➤ **!! Elimination phases**

- Athletes should be settled in the start position on the ramp **90 seconds** before their start time. There will be **volunteers to assist them if needed**.
- They should then listen to the Sport Presentation when they will be introduced to spectators.

c. Finish

i. Generic rules

- The finish time for Kayak Cross Individual will be triggered by photocell.
- During the Elimination phase, a photo finish system will be deployed.

ii. **!! Specific rules**

- The finish line will be **the same as Canoe and Kayak event** and is indicated on the course map.

d. Rules reminder

o Kayak Roll

For the **roll barrier**, the roll must be performed by **going down on one side and coming up on the other**. During the execution of the roll, the boat must be **underneath the barrier for at least one phase of the action**.

For the **roll zone**, the roll must be performed by **going down on one side and coming up on the other within the marked area**.

10. ICF topics

a. 2026 ICF Junior & U23 World Championships Krakow

The Canoe Slalom Committee is still looking for one course designer for the 2026 ICF Junior & U23 World Championships in Krakow, Poland. If your NF is interested in nominating someone, please contact [Manon Bocquet](#) & [Sue Natoli](#).

b. 2026 ICF CSL World Championships Oklahoma

- 1- **Entry check:** check and update your entries as soon as possible – Numerical entries deadline is June 5th. The groups for the official training sessions will be compiled according to the **number of boats** ("Events" tab) and to the **number of competitors** ("People" tab) entered by the NFs of the numerical entries on SDP.
- 2- **Visa demand** – All application need to be processed asap. [Info about VISA](#). If you have any issue getting your Visa, please contact [Beth Spillman](#), ACA CEO.

c. 2027 ICF Ranking calendar

Applications are open through SDP until 1st of September 2026.

d. Injury & illness report

The ICF Medical Committee has developed a new [reporting tool](#) (Microsoft Forms) through which your athletes, team leaders, and team staff can report any injury or illness occurring during an ICF competition. This tool is available across all ICF disciplines and is fully anonymous and confidential.

The purpose of this initiative is to collect data that will enable the ICF Medical Committee and the ICF Discipline Committees to assess potential risks and implement the necessary measures to ensure athlete safety.

The tool is accessible on the ICF website, under Events – Athletes – [Athlete Health and Wellbeing](#) page.

We would greatly appreciate it if your athletes, team leaders, and team staff could complete the form throughout the season whenever a relevant incident occurs. A poster will also be displayed at all competition venues for reference.



e. Prevention of Harassment and Abuse in Sport (PHAS)

i. ICF policy and statement

Prevention of Harassment and Abuse in Sport (PHAS) Policy aims to protect the physical and psychological integrity of the athletes and any other person related to the paddling family.

The ICF strongly condemns harassment and abuse in all forms at any time and is committed to preventing this conduct by acting diligently to avoid its occurrence, and inappropriate situations that may give rise to their happening.

ii. The policy will be applied during ICF competitions

Suspected harassment and abuse must be immediately reported. The [report form](#) is available on the ICF website and will be treated with impartiality and confidentiality.

Local regulations must be followed in all cases.

iii. ICF PHAS officer during this competition

Please report any occurrence to the ICF PHAS officer on site: Micheal T Okubo – michael.okubo@canoeicf.sport / +49 162 1926696.

iv. Reference and tools

Prevention of Harassment and Abuse in Sport (PHAS) Policy


https://www.canoeicf.com/sites/default/files/icf_safeguarding_phas_policy.pdf

ICF Safeguarding PHAS Report

https://www.canoeicf.com/sites/default/files/icf_safeguarding_phas_report_form.pdf

f. Athletes' Survey

The newly formed ICF Athletes Committee is here to champion your voice, protect your wellbeing, and help shape the future of our sport. To do that effectively, the Committee needs to hear directly from you. This [brief survey](#) is the first step in building a stronger, more connected athlete community. Your insights will directly guide the Committee's goals for the upcoming year. Let's make our sport the best it can be, together!

 **Survey Incentive:** As a thank you for your time, all athletes who complete this survey and provide their email address will be entered into a prize draw to win a Blackroll recovery set.

When you submit this form, it will not automatically collect your details like name and email address unless you provide it yourself.



11. Appendices

Appendix 1 – Venue Map

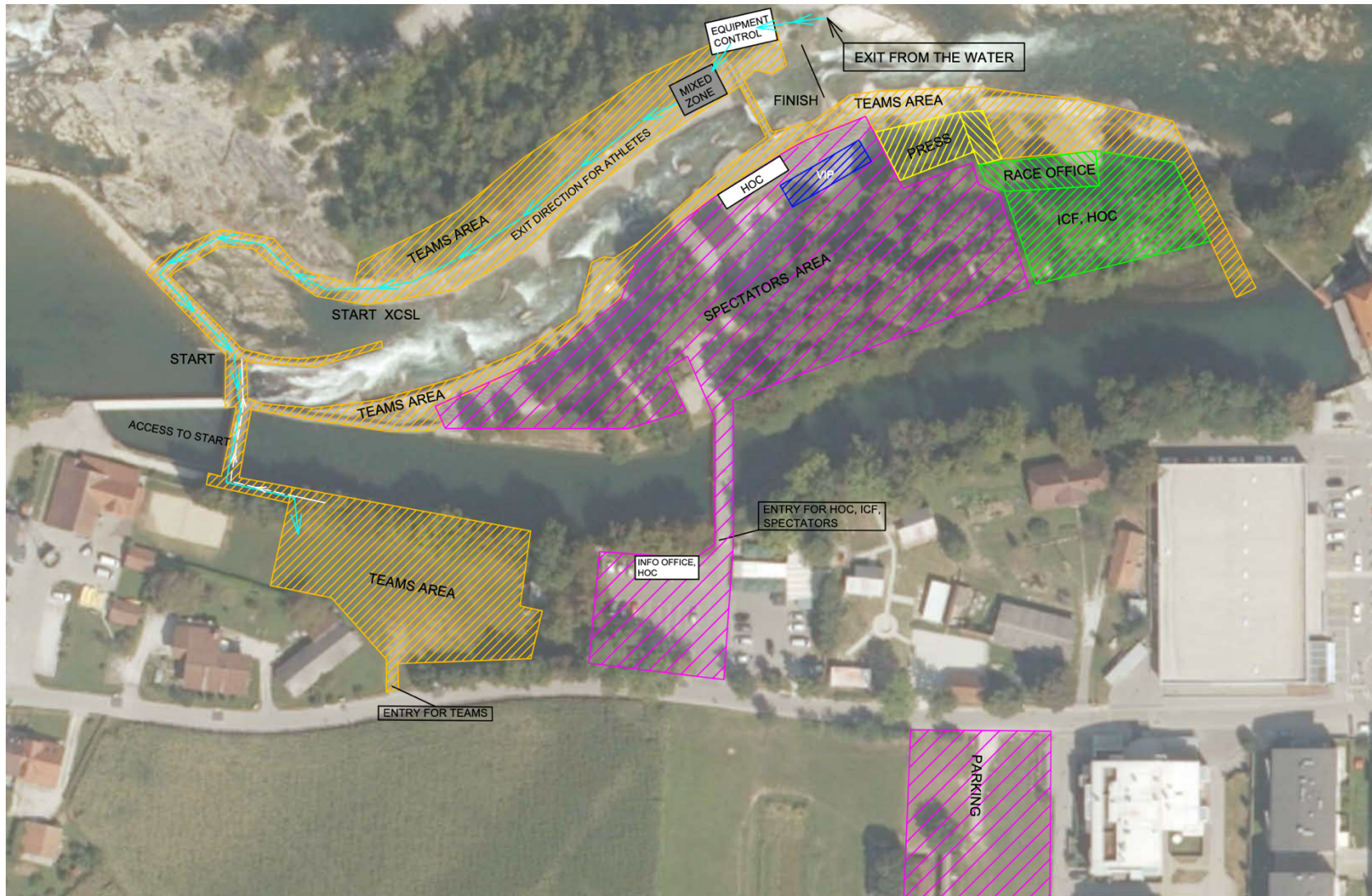
Appendix 2 – Demonstrators / Forerunners

- Canoe & Kayak events
- Kayak Cross

Appendix 3 – Bibs design allocation

- Forerunners
- CSL Individual events
- Kayak Cross Individual
- Kayak Cross Elimination phases

a. !! Appendix 1 - Venue Map



b. !! Appendix 2 – Demonstrators / Forerunners

i. Canoe and Kayak events

Remark: For Canoe, left-sided, right-sided and switcher paddlers are needed.

➤ Demonstration

- Course tuning
- Full course rehearsal

Bib	Event	Name	Bib	Event	Name
1	WK1	TBC	5	WK1	TBC
2	MK1	TBC	6	MK1	TBC
3	WC1	TBC	7	WC1	TBC
4	MC1	TBC	8	MC1	TBC

➤ Forerunners

- Full course forerunners

Bib	Event	Name	Bib	Event	Name
1	WK1	Ula Skok	5	WK1	Sara Globokar
2	MK1	Jan Ločnikar	6	MK1	Domen Bregar
3	WC1	Sara Belingar	7	WC1	Ema Lampič
4	MC1	Matej Trojanšek	8	MC1	Juš Javornik

ii. Kayak Cross events

➤ Rehearsal (2 races)

- 2 races, two sets of 4 athletes (men, women)
- Full course rehearsal

Bib	Name	Name
Red	Lea Senica	TBC
Green	Enej Grm	TBC
Blue	Jan Jančar	TBC
Yellow	Lucian Požlep	TBC

➤ Kayak Cross Individual – Forerunners

- Full course rehearsal

Bib	Name
9	Lea Senica
10	Enej Grm
11	Jan Jančar
12	Lucian Požlep

➤ Kayak Cross– Forerunners

- Full course rehearsal

Bib	Name
Red	Lea Senica
Green	Enej Grm
Blue	Jan Jančar
Yellow	Lucian Požlep

c. !! Appendix 3 – Bib design allocation

Deposit: 100€ (by cash)

i. Forerunners

Red bibs with black numbers 1 – 12

ii. CSL Individual events

MK1	WC1	WK1	MC1
POMGRAD	I FEEL SLOVENIA	ELES	ADRIA COMBI

iii. Kayak Cross Individual

MEN – I FEEL SLOVENIA	WOMEN – ELEKTRO LJUBLJANA
------------------------------	----------------------------------

iv. Kayak Cross elimination phase

Red (highest ranked)	Green (2 nd highest ranked)	Blue (3 rd highest ranked)	Yellow (4 th highest ranked)