

Athletes' meeting

Krakow, 18 June 2022

- Welcoming (5 minutes)
- Extreme Kayak Rules presentation(25 min)
- Questions and open discussion (45 min)

Extreme Kayak Rules Discussion & Evolution

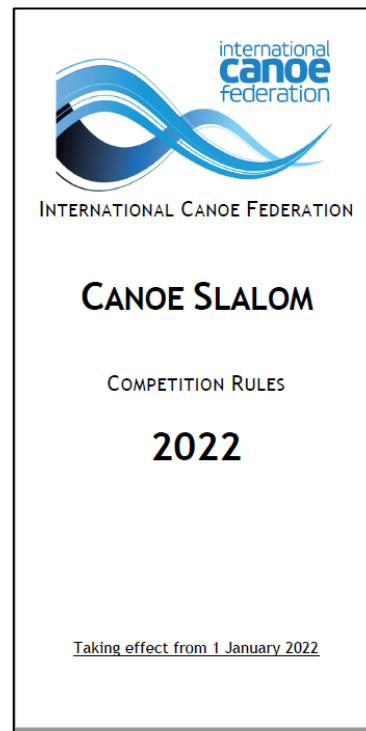
*A process shared within the whole
paddling family*

Rules processing and evolution

- Canoe slalom rules

16. Extreme slalom rules

- Sport rules => modification possible every year and proposed by the committee
- Goal => to fix the rules for 2023 and 2024
- 2022 season, useful for the evolution (potential evolution has to be voted each competition)



CHAPTER 16 - EXTREME CANOE SLALOM - COMPETITION RULES	77
I - EQUIPMENT	77
16.1 - Boat [SR]	77
16.2 - Helmet [SR]	77
16.3 - Buoyancy aid [SR]	78
16.4 - Body Protection [SR]	79
16.5 - Paddle [SR]	79
16.6 - Equipment control [SR]	80
16.7 - Advertising [SR]	80
II - COMPETITION PROGRAMME	80
16.8 - Competition programme [PR]	80

ICF Canoe Slalom Competition Rules 2022
10 of 93

III - COMPETITION FORMAT	80
16.9 - Time trials [SR]	80
16.10 - Progression system [SR]	81
16.11 - Starting position [SR]	81
16.12 - Force majeure [SR]	82
IV - INVITATION AND ENTRIES	82
16.13 - Entries [SR]	82
V - COMPETITION OFFICIALS	82
16.14 - Officials [SR]	82
16.15 - Duties of Officials [SR]	83
VI - FIELD OF PLAY	83
16.16 - Gate requirements [SR]	83
VII - PRE-COMPETITION	83
16.17 - Competition schedule [SR]	83
16.18 - bibs (final phases) [SR]	83
16.19 - Course design requirements [SR]	84
16.20 - Approval of the course [SR]	84
VIII - COMPETITION	84
16.21 - Start [SR]	84
16.22 - Gate negotiation [SR]	85
16.23 - Safety rules [SR]	86
16.24 - Penalties [SR]	86
16.25 - Clearing the course [SR]	86
16.26 - Timing [SR]	87
IX - POST-COMPETITION	87
16.27 - Calculation of results for time trials [SR]	87
16.28 - Calculation of results for Final Phases [SR]	88

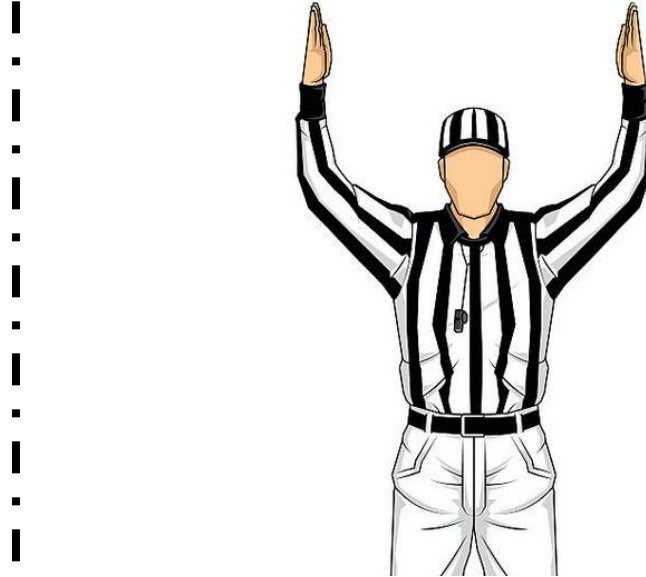
Canoe slalom is a discipline with 2 events:

- Canoe and kayak slalom
- Extreme kayak (~~Extreme slalom~~)

Canoe and Kayak slalom



Extreme kayak



Requirements

- List edited by the ICF
- Mass produced, accessible for every athlete/NF to buy in a shop
- Personal fittings and modification are allowed **inside** the boats in accordance with safety rules

Requirements

- No sharp edges (Tape tolerated this season)
- Next year => rule for the thickness of the blades as in canoe polo

- Broken paddle => athlete must stop and exit the course (DNF) for safety reason

Requirements

- List edited by the ICF
- Slalom helmet allowed in time trials until the 1st of July
- ICF has helmets for loan during Elimination phase

Recommendations

- Mouth guards, full face helmets recommended
- Work in progress - homologated helmets with grill or face mask protection

Requirements

- Buoyancy above the waist (Hiko Jackpot accepted)

Recommendations

- Buoyancy is a useful protection
- Playboat lifejacket recommended

Requirements

- Long sleeves required (Time trial and Elimination)

Recommendations

- Pads on the arms and shoulder like in ski



Time trial

Only numerical bibs, following the CSLX ICF World ranking.



Elimination phase

Two types of bibs:

- Numerical bibs based on your time trial ranking
- Coloured bibs ordering athletes in their bracket based on order in previous bracket

HEAT 1 (H1)	Bib n°	Color
1st in time trial	1	R
16th in time trial	16	G
17th in time trial	17	B
32nd in time trial	32	Y

HEAT 2 (H2)	Bib n°	Color
8th in time trial	8	R
9th in time trial	9	G
24th in time trial	24	B
25th in time trial	25	Y

Quarterfinal 1 (QF1)	Bib n°	Color
1st in H1 or H2	lowest bib	R
1st in H1 or H2	highest bib	G
2nd in H1 or H2	lowest bib	B
2nd in H1 or H2	highest bib	Y



- If an athlete, or their equipment, falls from the platform => DNS and they must exit from the start platform or the course
- To access the start platform all Athletes must have appropriate equipment, or they can not start => DNS

Ramp only

- Ready

Athlete must remain still (no movement) between ready and go
Otherwise, False start

- Go....

A start machine is coming soon

- Front flap and synchronized pneumatic mechanism
- Expected for u18 and u23 Ivrea World Championships

Course requirements

Length

- Courses (~1 minute)

Gates

- Upstream gates are weighted and touching water
- Downstream gates, as close as possible to the water whilst remaining stable

Roll barrier

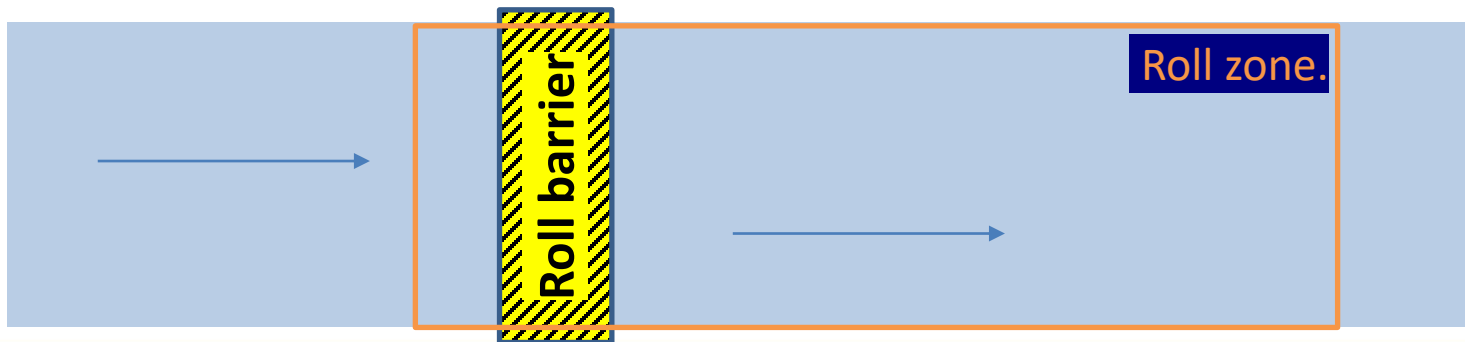
- Roll barrier must be hung and fixed to minimise any motion due to the athletes, equipment or wind

Existing written rule:

- 16.19.5 - The course must contain a marked roll zone or a roll barrier.
- 16.22.5 - For the roll zone, the boat must make a complete 360-degree roll within the marked area.
- 16.22.6 - For the roll barrier, the boat must make a complete 360-degree roll with the boat starting to roll before the barrier

Competition voted rule:

- 16.19.5 - The course must contain a marked roll zone **and/or** a roll barrier.



Fault vs Rank as lower

Not
following
rules



FAULT



Dangerous
or unfair
behaviour

**RANK
AS
LOWER**

Rank as Lower

Rule:

16.22.2.a - The **whole head and both shoulders** of the athlete must cross the gate line in accordance with the correct side of the gate and the course plan.

16.22.2.b - Part of the boat must cross the gate line at the same instant as the whole head crosses the line.

Safety (to avoid bow in the head)

Judging (easier to observe if gates are close to the water)

Define criteria to order according to the photo finish

⇒ **Bow of the boats**

⇒ **In case of impossibility to define the exact bow line of each boats, first part of the body outside of the kayak**

To be clarified, in discussion...

An athlete having a FLT or RAL, but **still interfering with other athletes**

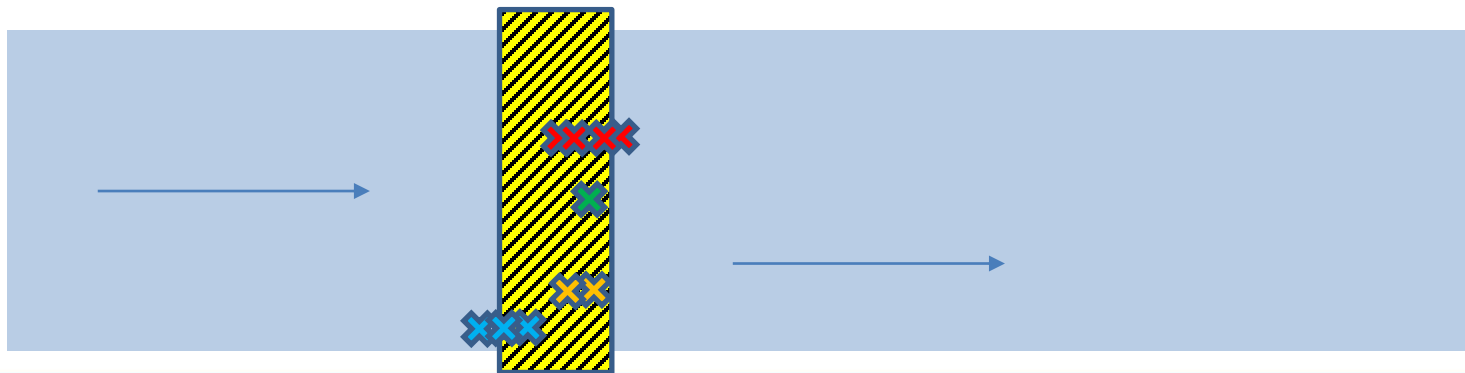
What to do with this situation?

- DQB
- Red card as in soccer (no entry at the next competition)

How to warn them?

Roll barrier evolution

- **Current rule**
Roll movement must be **started** before the barrier
- **Evolution**
Boat must be upside down **only at one point** under the roll barrier



Open discussion

*A process shared within the whole
paddling family*

Feel free to contact thomas.rosset@canoeicf.com

THE END

- Boat weight must decrease
- Start machine needs to be design for an easy access (financially and operationally)
- Broken paddle must not lead to DNF
- Time trial rank must be more valorised
- Roll barrier evolution accepted
- In favour of the integration of a rule of conduct to avoid anti-game behaviour
- Good feedbacks from the course of Prague (two options on gate 1 and RB/RZ)
- Upgates must be located in circulating upstreams