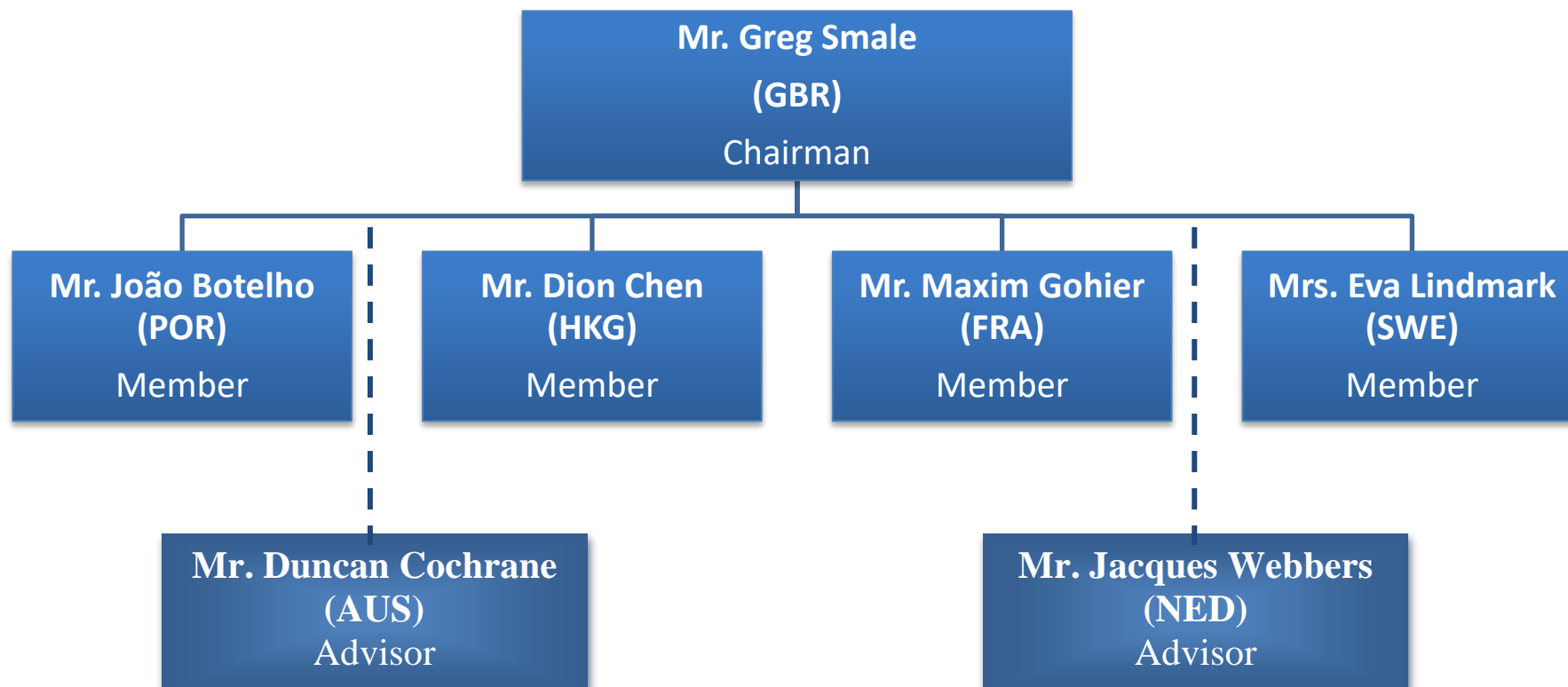


Always moving forward



Always moving forward

ICF Canoe Polo Committee

Chairman



Mr. Greg Smale (GBR) gregsmale@hotmail.com

(Member of ICF Board of Directors and ICF Competition Commission)

- To lead and co-ordinate the work of the ICF CPC in accordance with the decisions of Congress and the directives received from the ICF Board of Directors and the ICF Executive Committee.
- The Competition Commissions purpose is the co-ordination of competition matters (calendar, officials, bidding process, education, examinations, safety, organisation guidelines..)
- Support/involvement where necessary in all workings of the ICF CAP.

Member



Mr. João Botelho (POR) joao.botelho@fpcanoagem.pt

- Canoe Polo Development – America
- Referee and Rules Development Group

Member



Mr. Dion Chen (HKG) chendion@hotmail.com

- Canoe Polo Development Asia
- Special Projects

Member



Mr. Maxime Gohier (FRA) mgohier@ffck.org

- Lead for Online Coaching development
- Lead for ICF Coach Accreditation
- Canoe Polo Development Africa
- Referee and Rules Development Group

Member



Mrs. Eva Lindmark (SWE) evakanotpolo@yahoo.se

- Canoe Polo Development – Europe (working with ECA TD)
- 2018 ICF Canoe Polo World Championships – Technical Delegate

Advisor



Mr. Duncan Cochrane (AUS) duncan.1970@icloud.com

- Responsible for the Licensing and Manufacturers Programme
- Online Coaching Development and ICF Coach Accreditation Group
- Referee and Rules Development Group
- Co-ordination of proposed rule changes and rationale for ICF CAP

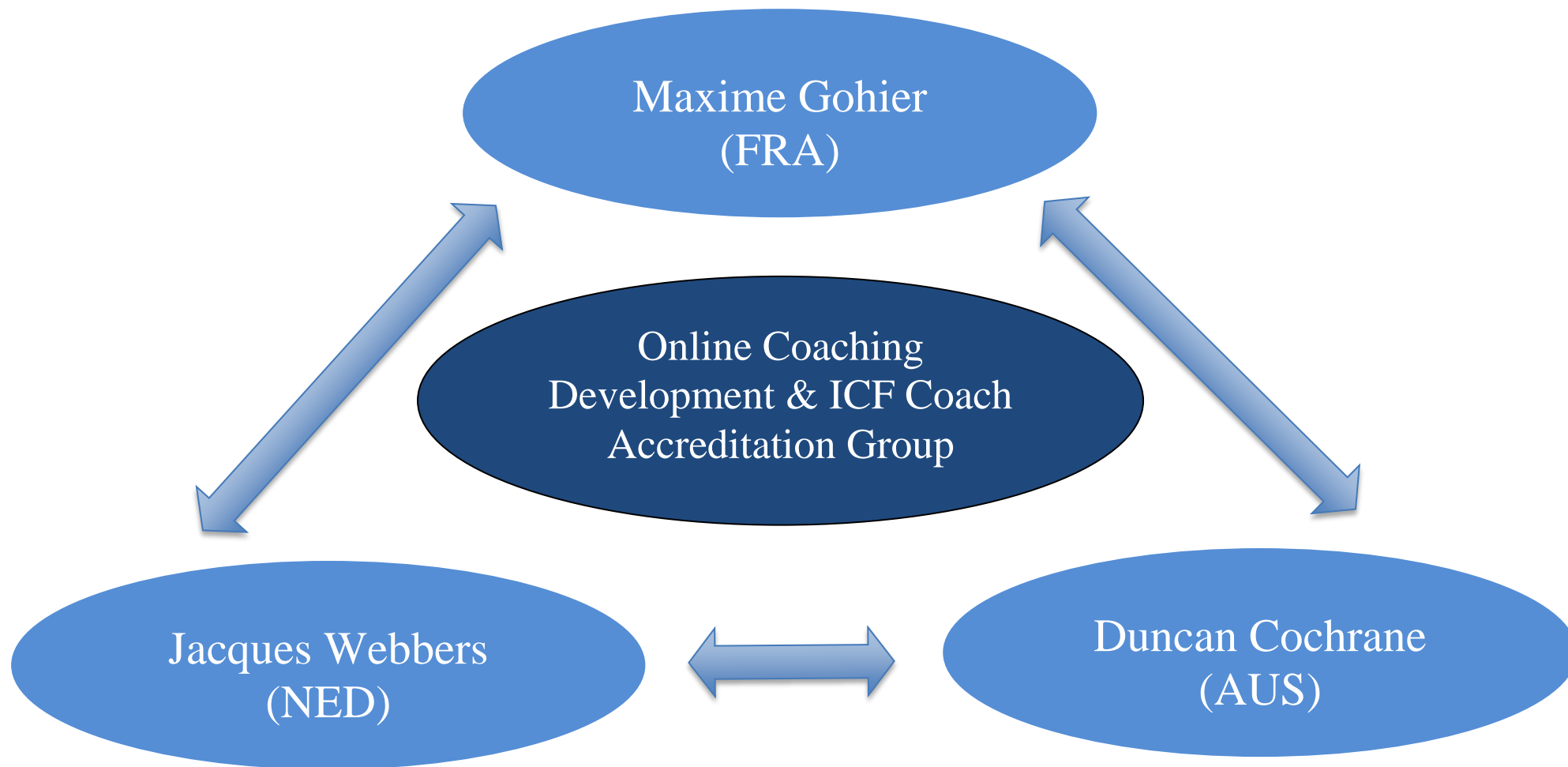
Advisor



Mr. Jacques Webbers (NED) webbersgerdes@hetnet.nl

- Online Coaching Development and ICF Coach Accreditation Group





Always moving forward