

**XXIII CAMPEONATO DE ESPAÑA CLÁSICA Y SPRINT
DESCENSO DE AGUAS BRAVAS
CAMPEONATO DE ESPAÑA DESCENSO DE AGUAS
BRAVAS JÓVENES PROMESAS**

20 Y 21 DE JUNIO



**Graus
Huesca**

 Prueba puntuable Ranking ICF
Sprint WildRiver

INFORMATION FROM THE ORGANISER
**23RD SPANISH WHITEWATER DOWNRIVER
CHAMPIONSHIPS: CLASSIC AND SPRINT**
**SPANISH DOWNRIVER CHAMPIONSHIP FOR YOUNG
PROMISING TEAMS**
FEDERACIÓN ARAGONESA DE PIRAGÜISMO



23RD SPANISH WHITEWATER DOWNRIVER CHAMPIONSHIPS: CLASSIC AND SPRINT SPANISH DOWNRIVER CHAMPIONSHIP FOR YOUNG PROMISING TEAMS

20 and 21 June 2026

Graus is a town and municipality in the province of Huesca, in Aragon. With a population of 3,434, it is situated in the Ribagorza region, of which it is the administrative capital, at the confluence of the rivers Ésera and Isábena.

Within sight of the Pyrenees, nestled amongst mountain ranges, on the banks of two rivers and at the mouth of a reservoir, Graus is situated in a setting blessed with stunning landscapes, wildlife, flora and nature.

As a gateway to the Pyrenees, within the municipality of Graus there are several **protected areas** designated as **SCIs** (Sites of Community Importance), such as the Sierra de Esdolomada and the Morrones de Güel, the River Isábena, the Sierra del Castillo de Llaguarres and the Congosto de Olvena. The opportunity to go hiking, Nordic walking, cycling, horse riding and more makes the area ideal for outdoor sports.

Another of the most interesting aspects is the **geology**, as this is one of the most comprehensive areas for its study and a key reference for understanding the Eocene on a global scale or for palaeontological research.

This environment, where **water** takes centre stage, from the Pyrenean flows of the Ésera and Isábena rivers to the calm, gentle ripples of the Joaquín Costa or Barasona reservoirs. Sports and adventure activities, with a particular focus on water sports, are made possible by the extensive infrastructure and facilities, such as the **Nautical Centre**, situated on the left bank of the reservoir, which features a large green area.

Graus: Town of Olympians

Our bid to host this event is not only to showcase our region and our rivers, but also to pay tribute to the only Olympian in the discipline of slalom and whitewater that Aragon has ever had: **José Martínez Ochoa de Zabalegui, who competed at the 1992 Barcelona Olympics.**



turismo
sostenible





Graus: <https://www.youtube.com/watch?v=boZTvTHAtS0>

HOW TO GET THERE

Graus is the capital of the Ribagorza region. Our town boasts an exceptional heritage among its streets and squares, which led to it being declared **a Historic Site** in 1975. Nestled in the heart of the Aragonese Pyrenees, its location at the confluence of the rivers Ésera and Isábena has made our town a crossroads and a place of transit for diverse peoples from across the ages.



How to get here



By car

- From Huesca, 80 km. (Via Barbastro)
- From Zaragoza, 155 km (via Huesca, Barbastro)
- From Lleida, 84 km (via Barbastro or Benabarre)
- From Barcelona, 239 km (via Lleida, Barbastro or Benabarre)



By train

Nearest railway stations: Monzón, 45 km away. Huesca, 80 km away. Lleida, 84 km away.

www.renfe.es



By bus

Regular bus services (Avanza) run daily to Graus.

For further information, please call:

974 210 700 (Huesca)

<https://www.avanzabus.com/>



turismo
sostenible



Ayuntamiento de Graus



Graus

David González Barrabés (630 684 279)

Ramón Mascaray (608 033 723)

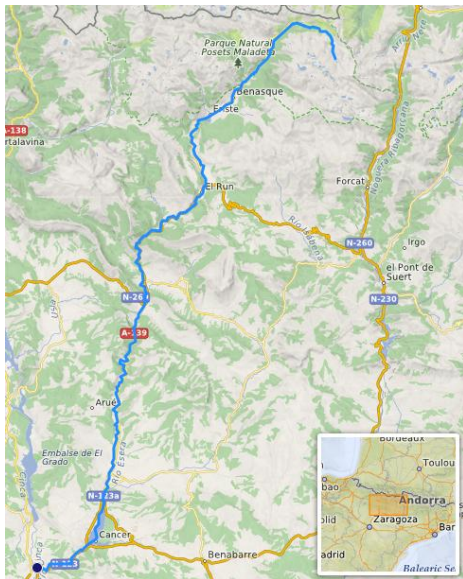
Javier Salamero (686 331 484)

José Antonio Lacambra (657 145 283)

VENUES

The River Ésera as it flows through Graus, where the Sprint race takes place on the River Ésera Whitewater Channel, and the Classic race on the stretch near the Graus Hydroelectric Power Station.

In May, the River Ésera has an average flow of 33.285 m³/s; at this time of year, a phenomenon known as the 'mayencos' occurs.



It rises on the north face of the Maladeta massif, at an altitude of 2,500 metres. Its valley is home to well-known towns in the province of Huesca, such as Benasque and Campo. It is a typical Pyrenean river, fed by the meltwater from the Aneto glacier and the high rainfall in its headwaters, where its waters are dammed for hydroelectric use in the Paso Nuevo reservoir—between Benasque and Plan del Hospital—and the Linsoles reservoir near Eriste .

At Graus, it receives a significant inflow from the River Isábena. Downstream, the river's course is dammed by the Barasona dam, from which the Aragón and Catalonia canal originates.

The water supply is guaranteed.





FACILITIES

RÍO ÉSERA WHITE-WATER CANAL

It is located right in the town centre, next to the municipal sports facilities in Graus.

Location of the channel: <https://maps.app.goo.gl/Rhmsk9vcHqzk68ta6>

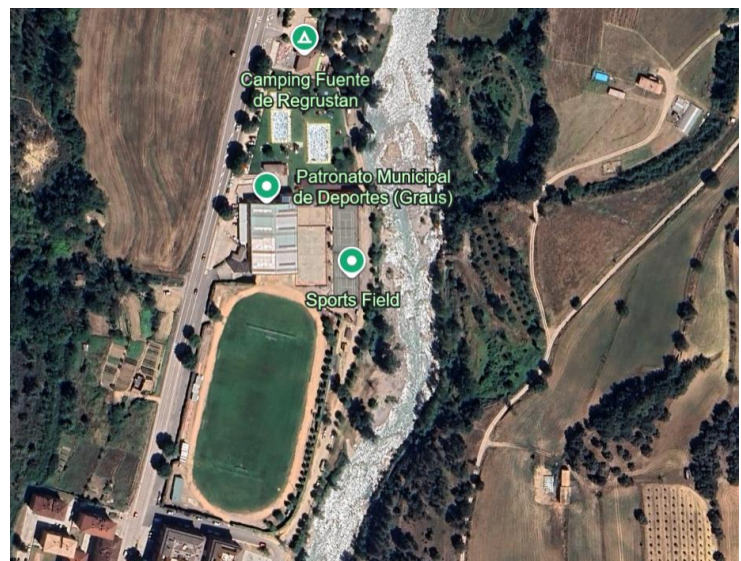


GRAUS MUNICIPAL SPORTS HALL

Adjacent to the channel is this municipal facility, equipped with everything needed for a sporting event.

Located 800 metres from the town centre. A-139 road towards Benasque.

Changing rooms, toilets and showers.





confirmation will take place here on Saturday morning from 9:00 to 10:00

ESERA RIVER RECREATIONAL AREA

On the banks of the river, and next to the canal, participants and the public can enjoy a recreational area with tables and a barbecue.



WEATHER

In Graus, summers are hot and mostly clear, winters are very cold and partly cloudy, and the climate is dry all year round. Throughout the year, temperatures generally range from 1 °C to 28 °C and rarely fall below -4 °C or rise above 32 °C.

In Graus, the month of June has an **average temperature of around 18–20 °C**, with **highs of 25–27 °C and lows of 12–13 °C**. Rainfall is **moderate (≈30–35 mm/month)** and consists mainly of **isolated showers**, with around **6–10 days of rain**. Cloud cover gradually decreases, reaching **high percentages of clear skies (~70–75%)**, indicating a mostly sunny month and a transition towards summer.

LINKS

Graus weather station

<https://www.aemet.es/es/eltiempo/prediccion/municipios/graus-id22117>





ACCOMMODATION, RESTAURANTS AND TOURISM

Graus Tourist Office

Plaza Mayor, 15 · GRAUS (Huesca) · Tel.: 974 540874

www.turismograus.com

Email: graus@turismograus.com



Graus is a town with a good range of tourist accommodation

TOURIST SERVICES IN GRAUS AND THE MUNICIPALITY

BARS/CAFÉS/PUBS:

CAFÉ SOLANET - Don Carlos, 2 - 974 54 65 84

DINTEL CLUB - Don Carlos, 2

CACAO - Plaza Mayor, 5

CAFETERÍA PASTELERÍA PUYET - Ángel Samblancat, 40 - 974 54 01 10

COFFEE SHOP SECASTILLA - Santa Bárbara, 1 - 974 56 84 03

TAPAS/RESTAURANTS:

TABERNA ROKOLA - Barranco, 41 - 677 30 16 01

EL PIVE PIZZERIA & RESTAURANT - Salamero, 2 - 974 54 61 74

CASA DEL BARÓN CAFÉ BAR - Plaza Mayor, 10 - 974 54 61 32

CASANOVA RESTAURANT - Miguel Cuervo, 28 - 722 11 73 63

POLLOXISPA BAR AND RESTAURANT - Miguel Cuervo, 11 - 974 09 66 70

EL CRITICÓN RESTAURANT - Plaza de Coreche, 2 - 974 09 82 63

FUENTE DE REGRUSTÁN BAR AND RESTAURANT - Ctra. Benasque, s/n - 974 54 04 22

BRUTAL GASTRO BAR - Salamero, 8 - 671 38 26 87

CASA FRANCÉS BAR AND RESTAURANT - Salamero, 22 - 974 54 07 40

LLEIDA BAR AND RESTAURANT - Ángel Samblancat, 26 - 974 54 09 25





BAR



CLUB KAYAK
RIBAGORZA

RESTAURANT EL RINCÓN - Salamero, 13 - 974 54 00 26

BODEGAS DE ARNÉS RESTAURANT - Ctra. Panillo, s/n - 974 54 03 00

BAR RESTAURANT BRASERÍA VALERO'S - Avda. Pirineos, 12 - 641 72 43 18

ABECÉ BAR AND RESTAURANT - Barranco, 54 - 974 20 77 82

LAS FORCAS TAVERN - Barasona, 1 - 974 54 11 24

KEBAB GULIBAR BAR AND RESTAURANT - Fermín Mur y Mur, 2 - 653 72 22 93

LA BODEGA DE SABORES BAR AND RESTAURANT - Salamero, 6

CASA ROQUE BAR AND RESTAURANT - Benasque Road (Las Ventas de Santa Lucía) - 974 54 08 65

L'ALCINA GRILL RESTAURANT - Única, s/n (Pano) - 633 19 97 40

HOTELS/GUESTHOUSES/INN:

HOTEL PALACIO DEL OBISPO - Plaza de Coreche, 2 - 974 09 82 63 <https://hotelpalaciodelobispo-graus.com-hotel.com/es/>

HOTEL BODEGAS DE ARNÉS - Road to Panillo, no. - 974 54 03 00 - www.bodegasdearnes.com

HOTEL LLEIDA - Glorieta Joaquín Costa, s/n - 974 54 09 25 - www.hotel-lleida.com

HOSTAL LÓPEZ - Salamero, 2 974 54 00 87 - www.hostalbarlopez.com

PENSIÓN PEPERILLO - Joaquín Costa, 8 - 639 46 72 53

HOTEL CASA ROQUE - Benasque Road (Las Ventas de Santa Lucía) - 974 54 08 65

RURAL TOURISM ACCOMMODATION:

CASA ALFONSO - Ctra. Benasque, s/n 974 54 00 49 - www.turismoruralribagorza.com

CASA FRANCÉS - Única, s/n (Bellestar) - 974 99 40 02 - www.casaelfrances.com

CASA SARRAU - Única, s/n (Bellestar) - 625 02 18 09 - www.casasarrau.com

CASA DOMINICA - Única, s/n (Coll de Oliva) - 630 16 14 85

CASA CARPINTERO - Las Heras, 6 (Juseu) - 655 51 63 20

CASA LORENZO - Única, s/n (Las Ventas de Santa Lucía) - 649 81 00 36 <http://casalorenzo.com.es>

CASA LA ABADÍA - Santa Ana, 4 (Torre de Ésera) - 629 58 55 81
www.apartamentosturisticosgraus.com

LA BODEGA DE PUY - Única, s/n (Torre de Obato) - 625 60 17 88 - www.bodegadepuy.com

CASA TRILLO - Entrada, 8 (Torres del Obispo) - 616 91 97 99 - www.casatrillo.com



turismo
sostenible





Ctra. Benabarre, s/n (Torres del Obispo) - 607 63 89 86 www.turismoruralcasalola.com

CASA FÉLIZ - Molino, 2 (Torres del Obispo) - 660 07 65 09 - www.casafeliz.com.es

LAS CASSETAS DE MATEU - Ctra. Graus, 3 (Torres del Obispo) - 685 52 22 28
<https://lascasetasdemateu.com/>

TOURIST APARTMENTS:

APARTAMENTOS GRAUS - Barranco, 10 - 629 58 55 81 www.apartamentosturisticosgraus.com

CASINO LA PEÑA/CASA LA VIRGEN APARTMENTS - Plaza Coreche, 2 - 974 09 82 63

ITACA APARTMENTS - Joaquín Costa, s/n - 656 86 84 61 - www.turismoruralribagorza.com

PALACIO BARDAXÍ APARTMENTS - Plaza Mayor, 3 - 607 47 30 87 www.palaciobardaxi.es

VIVIR EN RIBAGORZA APARTMENT - Mayor, 1 - 665 28 67 38

CASA FRANCISCA APARTMENTS - Muro, 6 (Torres del Obispo) - 974 54 48 15

CAMPING: CAMPING FUENTE DE REGRUSTÁN - Ctra. Benasque, s/n - 974 54 04 22
www.campinggraus.com

HOSTELS:

GRAUS YOUTH HOSTEL - Partida Coscolla, s/n - 684 07 71 72 - <https://alberguedegraus.com>

TOURIST ACCOMMODATION:

VUT EL PELLAIRE - Valle de Arán, 5 - 605 94 38 38

VUT EL RINCÓN DE CELIA - Prior, 15 - 646 85 08 75

VUT NATURA - Campo Zapata, house 12 - 626 62 56 57

Further information:

Useful links:

<https://www.turismograus.com/alojamientos-2/>

Tourist accommodation

<https://www.turismograus.com/alojamientos-2/>





Restaurants

<https://www.turismograus.com/restaurantes/>

Things to do:

<https://www.turismograus.com/>



turismo
sostenible





HEALTHCARE AND HOSPITAL CENTRES

Graus Health Centre

[C. Valle de Arán, 2, 22430 Graus, Huesca](#)

[974 54 05 00](#)

Barbastro Hospital

[National Road 240, s/n, 22300 Barbastro, Huesca, Huesca](#)

[974 24 90 00](#)





COMPETITION

COMPETITION CIRCUIT SPRINT EVENT

The event will take place on the Aguas Bravas course, covering a distance of 300m, with currents suitable for this event.



This year, the sprint event will count toward the ICF Wildwater Canoeing Sprint Ranking. All athletes over the age of 15 who wish to participate must register using the link provided by the organization in the competition bulletin.

Registration deadline: Wednesday, June 10, 2026 at 14:00.



DISINFECTION PROTOCOLS

In accordance with the disinfection measures to prevent the spread of zebra mussels, all boats must arrive disinfected as specified in the disinfection protocol (<http://www.chebro.es/contenido.visualizar.do?idContenido=11945>). All boats and paddles must be disinfected once the sporting event has finished.

It will be mandatory for all boats to pass through the disinfection point at the end of the races, in both the classic and sprint events.

2. EMBARCACIONES SIN MOTOR



2.1. Eliminación de restos adheridos

- En el mismo lugar de desembarque, se procederá al vaciado total del agua del interior de la piragua o barca.
- Se inspeccionará cuidadosamente toda la embarcación y los equipos que hayan estado en contacto con el agua, eliminando los ejemplares de mejillón cebra y restos de vegetación acuática visible.

2.2. Secado y desinfección

Se pueden eliminar las larvas de mejillón cebra por secado de las embarcaciones, mediante limpieza con hidrolimpiadora o bien aplicando una solución clorada.

2.2.1. Secado de las embarcaciones

- Vaciar y secar la embarcación minuciosamente, de manera que no quede ningún resto de humedad donde pueda refugiarse alguna larva de mejillón cebra y ser transportada a otra masa de agua. Prestar especial atención a las zonas menos accesibles y más difíciles de vaciar y secar.
- En el caso de que el equipo no vaya a ser usado se mantendrá en cuarentena durante 10 días aumentando este tiempo en función de las condiciones climatológicas, de almacenamiento, etc. En caso de no poder mantener los días de cuarentena se procederá al secado manual mediante esponjas o bayetas secantes.



2.2.3. Aplicación de productos desinfectantes

- Rocíar la piragua con una solución clorada de 1mg de cloro libre/l (añadir 0,25 ml de lejía en 10 l de agua) asegurándonos de que el producto llega a todos los recovecos de la embarcación.
- Los equipos que hayan estado en contacto con el agua: salvavidas, impermeables, vadeadores, artes de pesca, etc., deberán seguir el protocolo de desinfección de equipos desarrollado en la p. 10.



II Open de Rafting Sprint Canal de Aguas Bravas del Esera

20 de junio 2026



Head to Head -R4
Recorrido 300m. Categoría Absoluta
Horario de 17:30 a 19:00

Inscripciones hasta el
jueves 18 de JUNIO.
No federados SE



On Saturday afternoon, after the official competitions have finished, the 2nd Ésera Wildwater Channel Rafting Sprint Open will be held, open to all athletes who wish to participate. From Aragón, we are carrying out the "Rafting Aragón" project, whose aim is to revive rafting as a competitive discipline while highlighting the value of our whitewater venues.



FURTHER INFORMATION



FAP
Federación Aragonesa de Piragüismo

SELMA PALACIN ARTIGOSA
DIRECTORA TÉCNICA FEDERACIÓN ARAGONESA DE PIRAGÜISMO

☎ +34 605172536
✉ direcciontecnica@fapiraguismo.es
🌐 www.fapiraguismo.es

