

2021 ICF Junior and Under 23 Canoe Slalom World Championships LJUBLJANA, Slovenia Team Leaders Meeting #1



1.	Welcome.....	3
2.	Roll call of National Federations	3
3.	Competition Officials	3
4.	Approval of the agenda.....	4
5.	Questions about «2020 Rules Appendices»	4
6.	Extreme Canoe Slalom events – Dedicated Team Leaders Meeting #2	4
7.	ICF / TACEN COVID19 Protocol	4
8.	Information during the competition – WhatsApp group	5
9.	ICF guidelines for advertising trademark identification on equipment.....	5
10.	Passport and Antidoping education programme (WADA) validation	6
11.	Provisional start list review.....	6
12.	ITOs fee.....	6
13.	Events validity	6
14.	Competition schedule	6
15.	Course information.....	7
16.	Course design timetable	7
17.	Demonstration runs.....	7
18.	Course approval.....	8
19.	Bib Distribution.....	8
20.	Team events – rules reminder	10
21.	Individual events – race information.....	11
22.	Technical Video Service – set up schedule.....	13
23.	Venue – key areas and services	13
24.	Security	15
25.	Opening Ceremony.....	15
26.	Extreme Canoe Slalom	15
27.	Other business	15
	Appendix 1 – Venue Map.....	16

1. Welcome

2. Roll call of National Federations

Calculation of simple majority should a vote be required. Chief Official also has a vote and in case of a tied vote the Chief Official has the casting vote.

ALGERIA	ALG	LATVIA	LAT
ANDORRA	AND	LITHUANIA	LTU
AUSTRIA	AUT	MOROCCO	MAR
BELGIUM	BEL	REPUBLIC OF NORTH MACEDONIA	MKD
BRAZIL	BRA	MAURITIUS	MRI
CANADA	CAN	NETHERLANDS	NED
CHILE	CHI	NEW ZEALAND	NZL
CROATIA	CRO	POLAND	POL
CZECH REPUBLIC	CZE	ROMANIA	ROU
SPAIN	ESP	RUSSIA	RUS
FRANCE	FRA	SLOVENIA	SLO
GREAT BRITAIN	GBR	SERBIA	SRB
GERMANY	GER	SWITZERLAND	SUI
HUNGARY	HUN	SLOVAKIA	SVK
IRELAND	IRL	TURKEY	TUR
ITALY	ITA	UKRAINE	UKR
JAMAICA	JAM	UNITED STATES OF AMERICA	USA

3. Competition Officials

Role	Name
Jury Chair	Andrej JELENC (SLO)
Jury Member	Simon TOULSON (ICF) – remotely
Jury Member	Alena MASKOVA (CZE) - remotely
Competition Manager	Jakob MARUZIC (SLO)
Chief Official	Jean Michel PRONO (FRA)
Chief Judge	Christoph KIRSTEN (GER)
Assistant Chief Judge	Elke KLIEVERIK (NED)
Technical Organiser	Gaspar SENK (SLO)
Course designer nominated by the ICF	IRATI GOIKOETXEA (ESP)
	Sebastian SCHUBERT (GER)

4. Approval of the agenda

5. Questions about «2020 Rules Appendices»

https://www.canoeicf.com/sites/default/files/csl_2020_rules_appendices.pdf

6. Extreme Canoe Slalom events – Dedicated Team Leaders Meeting #2

- A dedicated Team Leaders Meeting will be organised for Extreme Canoe Slalom only.
- Friday 9 July at 17.45, ITOs & catering tent.

7. ICF / TACEN COVID19 Protocol

A. ICF / HOC PROTOCOL

https://www.canoeicf.com/sites/default/files/2021_icf_csl_ljubljana_jun-u23_worlds_covid19_protocol.pdf

B. GENERAL BEHAVIOUR AT THE VENUE FOR ALL ACCREDITED PERSON

key reminder: "Act as you want others to act"

- Face masks need to be either high quality manufactured masks with three layers, surgical masks or of higher standard (FFP2 etc.) without valves.
- Buffs/scarves etc. are not considered as face masks.
- All accredited persons **MUST** wear a face mask at all times when indoors or outside except when eating or drinking and for athletes, when they are on the water.
- The face mask **MUST** be worn over the mouth and nose.

C. FAILURE TO COMPLY WITH THE PROTOCOL

If an individual, or an entire team, does not respect these regulations, the ICF will:

- Give a first verbal warning, confirmed in writing, to the concerned person and their team leader (if applicable).
- If repeated, then give a second and final warning to the concerned person or their team leader (if applicable) and their National Federation President (if applicable).
- If repeated the ICF will deny access to the venue to the concerned person/team.

If the protocol is not well respected by the NFs, the ICF may organised mandatory additional Antigen test session at the cost of each NF later in the week.

D. Possible report by each National Federation to the ICF

- From now, any team leader can report to the ICF via email (jmprono@gmail.com and cyril.nivel@canoeicf.com) with any proof (e.g. photo) about repeated wrong behaviour from any accredited person.
- Based on it, the ICF will assess it and will send a warning to the concerned person or National Federation.

E. Antigen test # 2 – Tuesday 6 July

- It will be organised in the athlete village
- An official communication will be sent with all details and schedule
- Athletes competing in team events can go after the competition.

F. Optional departure test (PCR or antigen test)

- An official communication will be sent with a booking form.

8. Information during the competition – WhatsApp group

Link to click from your phone: <https://planet.canoeicf.com/2021-ICF-CSL-LJUBLJANA>



9. ICF guidelines for advertising trademark identification on equipment

http://www.canoeicf.com/sites/default/files/icf_csl_style_and_positioning_of_boat_stickers.pdf	<p>Part A MANDATORY</p> <p>Part B OPTIONAL</p> <p>Event logo or Event Sponsor logo</p>
---	--

If you need Name sticker and NOC sticker, please order it to andrej.jelenc@kajak-zveza.si by 22.00 tonight (Sunday 4 July).

10. Passport and Antidoping education programme (WADA) validation

11. Provisional start list review

12. ITOs fee

- ITOs fee is 40 EUR per entered athlete.
- All invoices have been sent to your National Federation and to your e-mail address.
- Each Team Leader is welcome to make the final payment directly to Cyril NIVEL at the ICF OFFICE.
- A receipt will be delivered at the venue when payment is processed by cash.

13. Events validity

DATE	Event	Validity	Course	DATE	Event	Validity	Course
CSL Team events	3xWK1 U23	Valid	Start from the top of the drop	CSL Individual events	WK1U23	Valid	Start from the top of the drop
	3xWK1J	Valid			WK1J	Valid	
	3xMK1U23	Valid			MK1U23	Valid	
	3xMK1J	Valid			MK1J	Valid	
	3xMC1 U23	Valid			MC1U23	Valid	
	3xMC1J	Valid			MC1J	Valid	
	3xWC1U23	Valid			WC1U23	Valid	For heats, start from the bottom of the drop (left eddy)
	3xWC1J	Valid			WC1J	Valid	
					XC2U23	CANCELLED	Start from the top of the drop
					XC2J	Not valid	
DATE	Event	Validity	Course				
Extreme Canoe Slalom	WU23	Valid	Start from the ramp				
	WJ	Valid					
	MU23	Valid					
	MJ	Valid					

14. Competition schedule

- Version 3 posted on ICF competition website after the Team Leaders meeting.

15. Course information

Name of Course	Tacen whitewater centre
Competition Course length	180m
Competition course drop	3.5m
Competition course flow	15 m3/s
Water regulation on course	From the dam

16. Course design timetable

- Teams events course map will be distributed from the Race Office by 18:15 Monday 5 July 2021.
- Heats and Semi-final / Final course maps will be distributed from the Race Office by 14:00 Tuesday 6 July 2021.
- Extreme Canoe Slalom course maps distributed at the Team leaders meeting #2.

17. Demonstration runs

A. Demonstrators

Event		Start bibs	Demonstrators & forerunners
MK1			Marko PETEK (SLO)
WK1			Ajda NOVAK (SLO)
MC1	Right		Vidmar KLEMEN (SLO)
WC1			Laurene ROISON (FRA)
MK1			Marlot ALJAZ (SLO)
WK1			Kragelj URSA (SLO)
MC1	left		Anze BERCIC (SLO)
WC1	Left / right		Ziga Lin HOCEVAR (SLO)

A. Schedule for Demonstration Runs – Team events course

TUESDAY 6 JULY - TEAM EVENTS COURSE		
08:15:00	09:00:00	Team events - Course Tuning with demonstration runners
09:00:00	09:12:00	Team events - full length demo run 1
09:12:00	09:22:00	Team events - Course approval
		Interval
09:32:00	09:44:00	Team events - full length demo run 2 & rehearsal
		Interval

Full length will be done by two teams.

B. Schedule for Demonstration Runs – Heats course

Wednesday 7 July - HEATS COURSE		
08:15:00	09:00:00	Heats - Course Tuning with demonstration runners
09:00:00	09:16:00	Heats - full length demo run 1
09:16:00	09:26:00	Heats - Course approval
		Interval
09:41:00	09:57:00	Heats - full length demo run 2 & rehearsal

C. Schedule for Demonstration Runs – Semi final / Final course

Thursday 8 July - SEMI FINAL & FINAL COURSE		
15:15:00	17:15:00	1/2 finals and finals - Course construction
16:45:00	17:30:00	1/2 finals and finals - Course Tuning with demonstration runners
17:30:00	17:46:00	1/2 finals and finals - full length demo run 1
17:46:00	17:56:00	1/2 finals and finals - Course approval
		Interval
18:06:00	18:22:00	1/2 finals and finals - full length demo run 2 & rehearsal
		Interval
19:30:00	19:30:00	Water OFF

18. Course approval

- Call for nomination from the Coaches/Team Leaders to be an “observer” to the Course Approval Committee

Team leader representative	GRB – Nathalie SIEGRIST
----------------------------	--------------------------------

- Course approval will take place immediately following the demonstration runs at the end of the course near the finish line.

19. Bib Distribution



A. Procedure

- Canoe Slalom Competition bibs will be available from the Info Office between from 14:00 on the Monday 5 July.
- For team events bibs a deposit of 100€ is requested.
- Team events bibs must be returned to the Info Office following the competition.
- Individual event bibs are given to the athletes as a gift by the HOC.

B. Bibs for individual events:

M C1 JUN	KOSTAK 	W C1 JUN	TELEKOM 	X C2 JUN	LAŠKO 
M C1 U23	I FEEL SLOVENIA 	W C1 U23	TELEKOM 	X C2 U23	LAŠKO 
M K-1 JUN	ELEKTRO LJUBLJANA 	W K1 JUN	I FEEL SLOVENIA 		
M K-1 U23	ADRIA KOMBI 	W K1 U23	RLS 		

C. Bibs for team events :

TEAMS JUNIOR	<p>SCHNEIDER</p> 
TEAMS U23	<p>LAŠKO</p> 

20. Team events – rules reminder

A. Start procedure

10.1.4 - In the team runs, all boats must be stationary. The boat in the start gate must activate the timing of the run. The boat can be either A, B, or C

B. Enquiry

11.1.2 - In team events, one (1) enquiry per team will be allowed.

11.1.3 - A National Federation may enquire on another National Federation one (1) time during the entire competition.

The entire competition consists of team events and individual events.

21. Individual events – race information

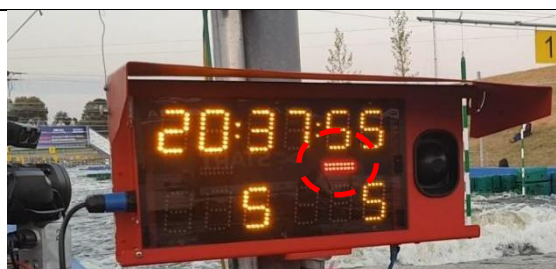
A. Pre-start procedure

- There will be a clock facing the lack on the pontoon on the left side of the start area.
- There will be no pre-start.

B. Start



- Athletes may move to the start position once the previous Athlete has broken the beam but must be at the start position 15 seconds before their start.
- The start is located on the river left.
- Athletes must start facing upstream in front of the backdrop.
- The beam line is located under the bridge – on the fall.
- At the start, there will be a countdown clock (right bank) showing the time to start. There will be an acoustic signal (10 seconds before start - 4 shorts, 1 long - start).
- Athletes must start **within 3 seconds of** their start time:



Red light □ the athlete **can't** leave the start position



Green light □ the athlete **can** leave the start position

- At all times, the athletes must follow the Starter's instruction, or they may be disqualified for the run.

C. Reminder



D. Finish



- The finish beam is located at the end of the artificial course in the natural river.
- The beam line will be indicated.
- Athletes must exit via stairs under finish line to pass through equipment control and the mixed zone.
- Athletes must not leave the finish zone until dismissed by the Equipment Control Judge once they are no longer needed for the ceremonies, anti-doping or equipment control.
- They then proceed via the mixed zone back to the Athlete area.

22. Technical Video Service – set up schedule

- A TVS feed will be available for all competitions phases and both demonstration runs.
- Only the download solution will be available to avoid gathering in TVS tent.
- Each Nation tent will be equipped with their own download cable.
- Address to use to download videos: <http://cis.siwi>
- **It is mandatory to test the TVS system Tuesday 6 July from 8.00 to 9.00.**
- **Reminder:**



23. Venue – key areas and services

See venue map attached in appendix 1

A. Team Areas

- NF tents are located on the field under the big antenna
- Boat storage is located on the field near the team areas
- We will provide the following services for athletes:
 - o Tap water
 - o Wireless internet **(from Wednesday)**
 - o Toilet

B. Info office

- Located near the bridge – access to the main venue and is open from 7.30 until the end of the training or competition each day.

C. Race office

- Race office is located near the timing & scoring office from Tuesday morning
- Team boxes are located at the Race Office from Tuesday morning.

D. Medical Services location and availability

- Medical care will be provided during racing days and will be located at the parking near the entrance.
- All accredited person must have valid medical insurance.
- All medical expenses must be covered by themselves.

E. Enquiry / Protest desk

- The Enquiry desk is located near the timing / scoring office.

F. Equipment control

- Equipment Control is located near the finish line.
- Self-checking is open
- **New scale will be available from Monday 5 July in the morning.**
- Equipment control will be open each day 1h before the 1st boat starts.
- There will be post competition control and random checking with all boats being checked during the Finals.

G. Medals ceremonies

- Location: see map in appendix 1
- Schedule: see competition schedule, after each session of final

H. Doping control station

- The doping control station is located near the Club house at the start of the course – athletes area.
- Athletes will be notified for Doping Control at the finish area.
- Athletes chosen will require their passport or ID card for identification purposes.

I. Car parking

- See appendix 1

24. Security

- The venue is a gated area and will be closed from 15 minutes after the WATER OFF to 7.00 every day.
- There will be surveillance during the night.
- The Organising Committee recommends not leaving anything valuable in the tents, the cars or at the competition venue.
- The Organising Committee will not accept liability in case of theft or disappearance of equipment from the site.

25. Opening Ceremony

- Location: Competition venue
- Conditions: behind close door
- Date: Monday 5 July
- Time: Commences at 20.00 and ends at 21.00
- Athletes must wear their national uniform.
- Limitation: 15 representatives per National Federations, dedicated stand to the NFs.
- The COVID19 protocol is applicable.
- Wristband will be distributed at the end of the team leaders meeting. It will be mandatory to have it to access the opening ceremony.

26. Extreme Canoe Slalom

- HOC boat management for the competition
- A survey will be conducted to optimise the organisation.

27. Other business

- The invoices for all training sessions prior to the official training period will be available at the Info Office from Monday 5 July 16.00.
- Invoice for arrival PCR test

Appendix 1 – Venue Map

