

Padding Slalom



Where ?

Kayaking Slalom is located in a whitewater, flat stream

Natural river



Artificial river



Flat stream



Flat water



What's the game?

Negotiate a rapid river course defined by gates

- From 18 to 25 gates
- The length of the course is from 250m to 400m



Red gates: go upstream



Green gates: go downstream

Equipment

Helmet protect the head in case of capsizing

+ water shoes



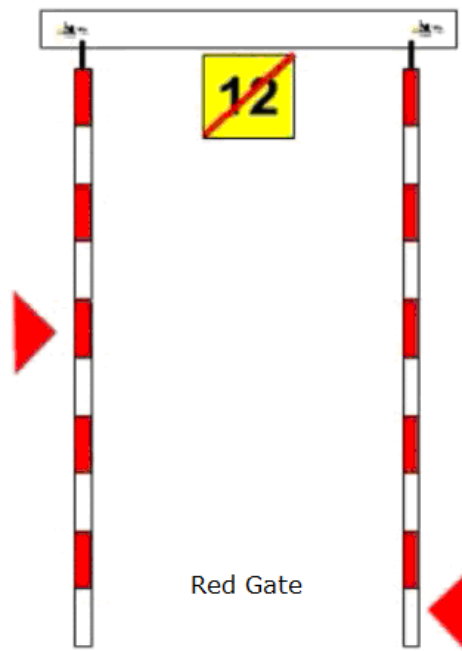
Spraydeck

prevent the water to come in the boat

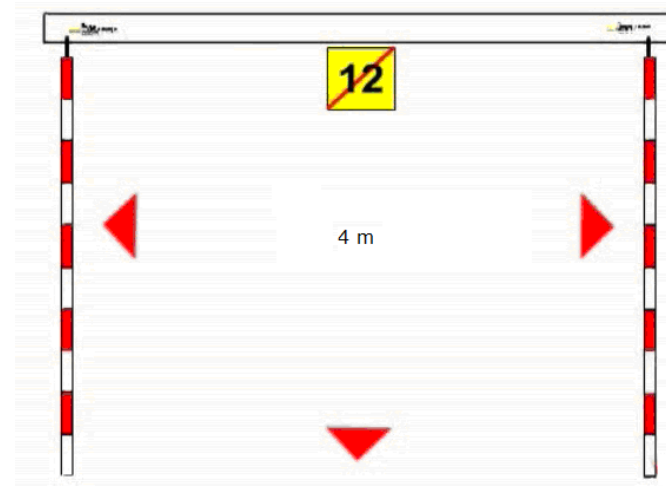
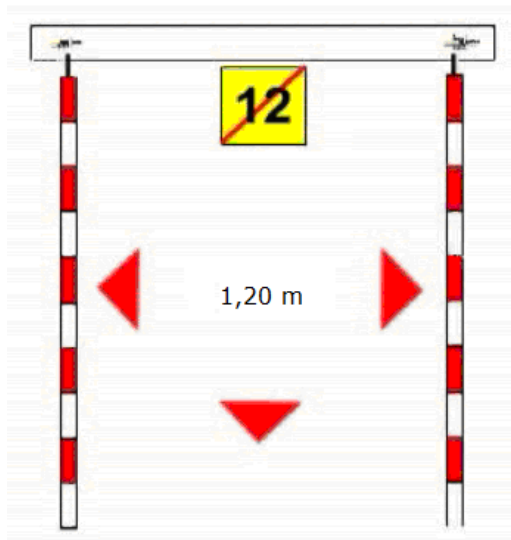
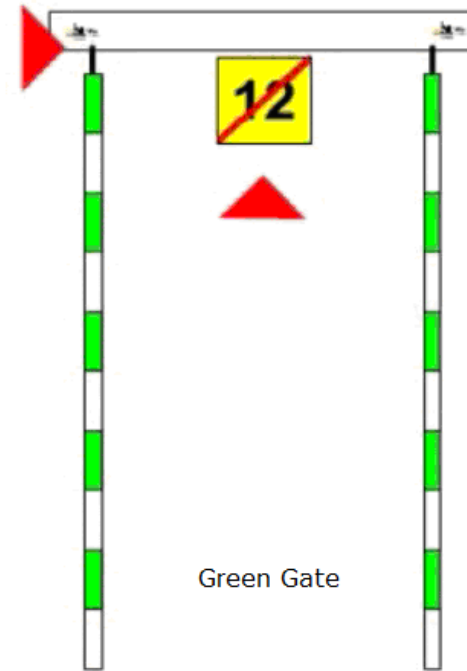
Lifejacket

Non-absorbent material in a jacket, keep the person floating in a face-up position

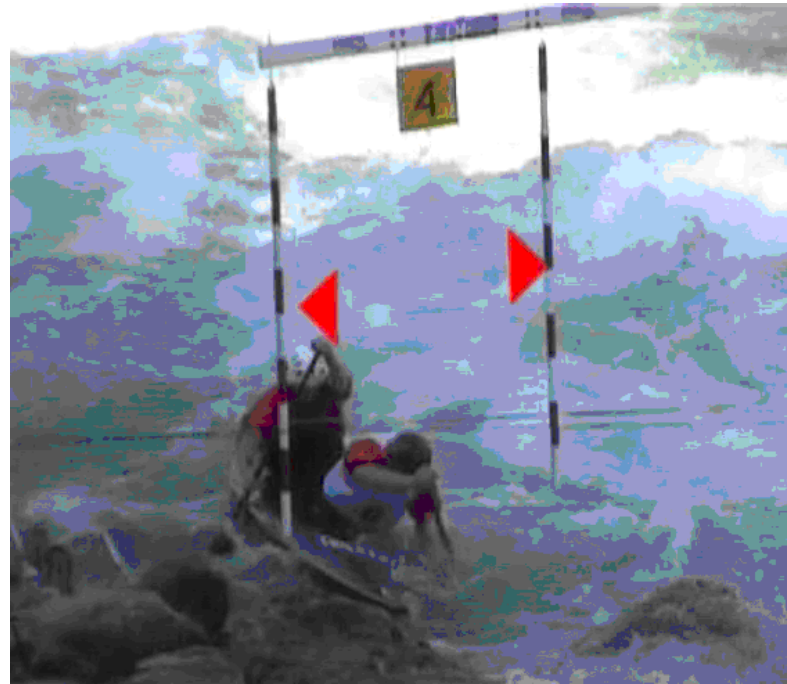
(International norms)



1,6 to 2m



Usual width



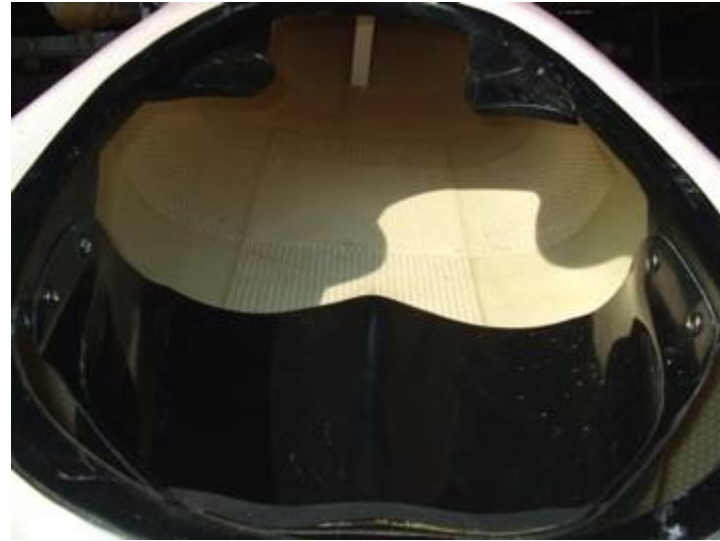
Large width



Kayak single



Kayak: Position and gear



Canoe



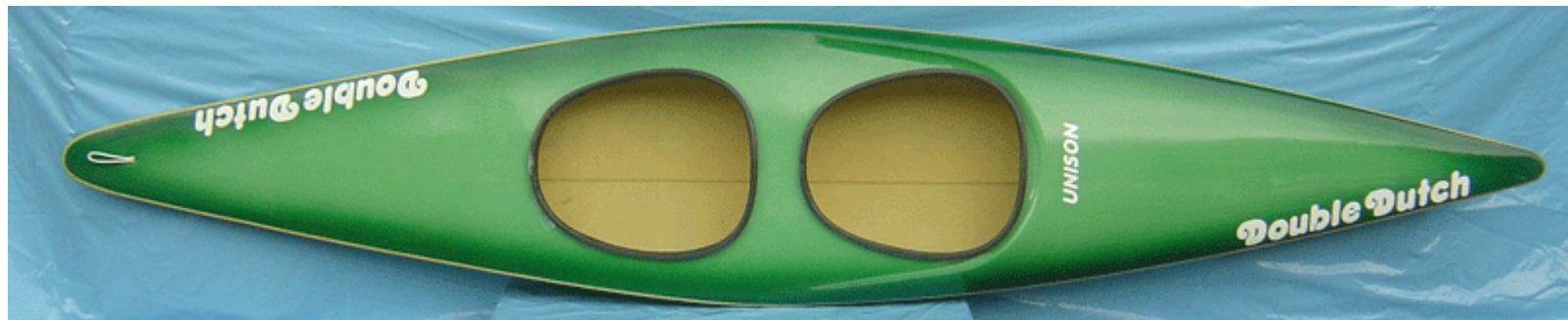
Canoe: Position and gear



C1



C2



Team

- 3 people for one team
- The penalties for the team are the sum of the penalties of each paddler
- The first who cross the start-line starts the clock watch. The last who cross the finish-line stops the clock watch.
- There are teams in each categories

Competition Rules

In the shortest possible time

The best time for the best paddler should be around 100 seconds

Rules

The gates must be passed

- In the order of numerotation
 - In the good direction

- With a minimum of penalties :
Touch a pool = 2 seconds added
Miss a gate = 50 seconds added

A race is made up by 2 runs

The final result is the best of the 2 runs for heats. Semi-final and final are made of 1 run only

1st run : 121 + 0

2nd run : 115 + 4

Final result : 119 points

The winner is the one who has the less points and on and on.....