



Tokyo 2020 Olympic and Paralympic Canoe Sprint

Customs and Freight Forwarding Guide **Appendix – Canoe Sprint (Ver.2)**

March 30th, 2021

Contents

1. INTRODUCTION

2. FREIGHT SUPPORT PLAN

2-1. SCOPE OF SERVICE

2-2. IMPORTER/EXPORTER

2-3. PRE-SHIPMENT PROCEDURE

2-3-1. Booking Request

2-3-2. Packing items and stuffing of containers

2-4. SHIPPING EQUIPMENT TO JAPAN (IMPORT PROCESS)

2-4-1. Freight Support Plan Cost

2-4-2. NOCs/NPCs Cost

2-4-3. Customs clearance process for exportation from HUB

2-4-4. Opening of the containers at the competition venue

2-5. SHIPPING EQUIPMENT FROM TOKYO (EXPORT PROCESS)

2-5-1. Freight Support Plan Cost

2-5-2. NOCs/NPCs Cost

2-5-3. Delivery from the competition venue to Tokyo port

2-6. INSURANCE

2-7. REMARK

3. INTERNATIONAL HUB INFORMATION

4. DELIVERY WINDOWS

5. EQUIPMENT

5-1 EQUIPMENT ELIGIBLE UNDER THE FREIGHT SUPPORT PLAN

5-2. Training Boats and other Equipment

6. NECESSARY PROCEDURES

6-1. IMPORT: in case of Freight Support Plan

6-2. IMPORT: in case outside Freight Support Plan

6-3. EXPORT: in case of Freight Support Plan

6-4. EXPORT: in case outside Freight Support Plan

7. **BOOKING REQUEST FORM TEMPLATE**
8. **ITEM LIST TEMPLATE (if Apply for Freight Support Plan)**
9. **ATTENTION**
10. **CONTACTS**

1. INTRODUCTION

This document summarizes the key principles of the Freight Support Plan for the transport of qualified Canoe Sprint boats and equipment to and from Tokyo for the Olympic and Paralympic Games.

All NOCs and NPCs that have athletes in Canoe Sprint competition for the Olympic and Paralympic Games can benefit from the Freight Support Plan.

In accordance with Tokyo 2020's bid commitment, and to offset the costs of round-trip transport to and from Tokyo for boats participating in Olympic / Paralympic Games, therefore Tokyo 2020 has created the following guidelines.

2. FREIGHT SUPPORT PLAN

Boats and equipment participating in the canoe competitions will be transported from the Tokyo 2020 designated international HUB (hereinafter referred as "HUB"), determined in conjunction with the relevant International Federations, on specific dates. These delivery windows will allow the items to arrive in time for training in Tokyo.

If NOCs/NPCs apply for the Freight Support Plan, their eligible items must be shipped together with all necessary documents and delivered to HUB.

2-1. Scope of Service

The following option is available to NOCs/NPCs enjoying the Freight Support Plan for boats:

- A) NOCs/NPCs can ship their qualified boats or boats entering the competition to Tokyo from HUB and back to the HUB after competition.
- B) NOCs/NPCs can ship their items to Tokyo from HUB and back to a different destination after competition. If NOCs/NPCs choose this option, the NOC/NPC needs to cover all costs* to export the items from Tokyo to another destination, however must use export customs clearance service of Tokyo 2020's official freight forwarder 'Yamato Global Logistics Japan' (hereinafter referred as "Yamato")

*Please note: NOCs/NPCs have to pay duty & tax if incurred at the destination country.

- C) NOCs/NPCs can ship their items to Tokyo from different location and back to HUB after competition. If NOCs/NPCs choose this option, the NOC/NPC needs to cover all costs* to export the items from that location to Tokyo, however must use import customs clearance service of Tokyo 2020's official freight forwarder 'Yamato Global Logistics Japan' (hereinafter referred as "Yamato")

*Please note: NOCs/NPCs have to pay duty & tax if incurred at the country of the HUB.

2-2. Importer/Exporter

Tokyo 2020 designated logistics partner will act as importer and exporter of the items and will assist with the customs clearance procedures in Japan and Germany. It is therefore mandatory that all items to be re-exported after the event.

Shipment for non-qualified boats and equipment which is not covered by Freight Support Plan must be arranged by NOCs/NPCs.

2-3. PRE-SHIPMENT PROCEDURES

2-3-1. Booking Request

- A) In order to apply for the Freight Support Plan, NOCs/NPCs must submit Booking Request to canoesprint_freight@tokyo2020.jp twice (1st Booking Request = submit by 16th April, Final Booking Request = submit **immediately right after the qualification in Szeged, Hungary**).

Please note:

- A separate Item List of boats and items must be provided to Tokyo 2020 along with each Booking Requests. (Please use the template in Section 8.)
- When submitting the 'Final Booking Request Form', please put kontakt@prowave.de in CC.

- B) NOCs/NPCs that will **not apply for Freight Support Plan** and intend to ship their own containers must submit booking request form to canoesprint_freight@tokyo2020.jp by 16th April, 2021. (Please note, booking request form must be submitted to TOCOG before the ship out date of the container. → TOCOG must check in prior if the containers are eligible to stay inside the venue.)

It is mandatory to use the boats and equipment in the games which are approved to ship under Freight Support Plan.

2-3-2. Packing items and stuffing of containers

It is Tokyo 2020 logistics partner's responsibility to pack the boats for international transport at HUB as well as at the competition venue after competition.

Only specified equipment by Tokyo 2020 is allowed to be loaded into containers. No other equipment will be permitted. NOC/NPC needs to provide Boats only in Boat Covers. As per international shipment regulations, it is mandatory that no other Equipment that is confirmed by Tokyo2020 can be loaded into the containers.

2-4. SHIPPING EQUIPMENT TO JAPAN (IMPORT PROCESS)

2-4-1. Costs covered by Freight Support Plan

The following costs will be covered by Tokyo 2020 as part of the Freight Support Plan:

- A) International and domestic freight costs from HUB to the Tokyo 2020 competition venue and back to the HUB in Kassel (Germany)
- B) All costs and fees (except duty & tax for One way movement) at the port of origin and at the port of Tokyo
- C) Any other costs (other than duty & tax for One way movement) relative to customs clearance in Tokyo and the HUB
- D) Loading/unloading the container sealed onto/from the trucks

2-4-2. NOCs/NPCs Cost

NOCs/NPCs are responsible for the following costs:

- A) Transport costs to/from the HUB
- B) Storage and logistic costs outside the HUB and outside the Venue in Japan
- C) Duty & tax at the HUB when used 'One way movement' of Freight Support Plan

2-4-3. Customs clearance process for exportation from HUB

Tokyo 2020 is responsible for clearing the cargo for exportation at HUB after receiving the items from the NOC/NPC.

2-4-4. Opening of the containers at the competition venue

Unstuffing of the container(s)/package(s) at the competition venue will be operated by Tokyo 2020 logistics partner. Then, all equipment will be handed over to the NOC/NPC at the venue.

Boats and equipment brought through Freight Support Plan can be moved from Canoe Day Village to Venue Main Area by Tokyo 2020 designated logistics partner.

2-5. SHIPPING EQUIPMENT FROM TOKYO (RE-EXPORT PROCESS)

2-5-1. Freight Support Plan Cost

The process for packing and stuffing the container is the same as for the import process. For NOCs/NPCs using the Freight Support Plan, Tokyo 2020 will cover the costs associated with the following:

- A) Loading the containers by Tokyo 2020 logistics partner for safe transport
- B) All costs and fees (except duty & tax for One way movement) at the port of Tokyo and at the port of destination.
- C) Any other costs (other than duty & tax for One way movement) relative to the customs clearance process for exportation at the port of Tokyo and at the port of destination.
- D) International freight costs to HUB

2-5-2. NOCs/NPCs Cost

NOCs/NPCs are responsible for covering costs associated with the following:

- A) Any cost relative to duties and taxes in Japan due to a discrepancy between items imported versus exported
- B) All transport costs from HUB to the equipment's final destination

2-5-3. Delivery from the competition venue to Tokyo port

Tokyo 2020 will take care of the inland freight from the competition venue to Tokyo port and will undertake the customs clearance process for exportation.

2-6. INSURANCE

Please note that Tokyo 2020 will **NOT** insure for the Freight Support Plan shipments. NOCs/NPCs are responsible to ensure that all equipment are insured for a sufficient amount to cover any eventuality including without limitations, problems occurring during Tokyo 2020 organized transportation between the designated HUB of origin to/from the venue. Therefore, NOCs/NPCs are strongly advised to take out third-party insurance providing full coverage for participation in the Tokyo 2020 games at home and abroad and to keep the policy up to date.

2-7. REMARKS

- A) NOCs/NPCs cannot use own containers (SOC) under the Freight Support Plan. The boats and equipment of each NOC/NPC are consolidated at HUB.
- B) If the items are not delivered to HUB by the NOC/NPC within the delivery windows determined by Tokyo 2020 for each Game, the NOC/NPC will not be able to enjoy the Freight Support Plan. In that case the NOC/NPC should be responsible for arranging all logistics operations, covering

- all costs and hiring a logistics operator in Japan to act as the importer of records.
- C) All equipment imported through the Freight Support Plan will arrive inside the Canoe Day Village (=Olympic containers) or the Venue Main Area (=Paralympic containers).
 - D) NOCs/NPCs can remove the equipment from the venue only for the purpose of the Pre-Games Training camp, however, local logistics, security and Insurance should be covered by NOCs/NPCs. In such case, all equipment must be back in the venue **by 31st July (for Olympic) / by 31st August (for Paralympic)**.

Please note : 'Booking Request Form' must be submitted to Carry-out/Carry-in the boats and equipment from/to the venue. (submit by 16th April, 2021)

- E) NOCs/NPCs may be represented by a logistics agent, however, they or the logistics agent will still be responsible for delivering the boats on time to HUB.
- F) All information regarding route/return destinations and instructions (if any) must be provided to Tokyo 2020 through the booking request form.
- G) Please note that even damaged items must return to their origin. Duties and taxes might be imposed at NOC/NPC's cost in the case of any item which does not return.
- H) A representative of the Tokyo 2020 logistics partner will be at the venue during the bump out period to coordinate the export shipments. This person will be available for last minute questions.
- I) Tokyo 2020 will set a weight limitation for the container: **Containers must not exceed 10,000 kilograms weight (= 10 tons)** due to ground condition at the venue.

3. INTERNATIONAL HUB INFORMATION

TOKYO2020 HUB Location are as follows:

<HUB for both Olympic & Paralympic: to Tokyo>

HUNGARY

Szeged (@ World Cup Event)

Szegedi Olympic Center,
Maty-éri evezőspálya, 5,
6710 Szeged – Hungary

Telephone number : + 49 1778750202

Email Address : kontakt@prowave.de

(Note : NPCs can pass the 'Paralympic-boats' to Prowave at the World Cup Event in Szeged to participate in the European Championships event in June, though the costs for transportation and

storage upto the Paralympic HUB in Duisburg have to be beared by the NPCs themselves. Please contact Prowave for detail.)

<HUB for Paralympic: to Tokyo>

GERMANY

DUISBURG (@ European ChampionshipsEvent):

Regattabahn

Kruppstraße 30A

47057 Duisburg – GERMANY

Telephone number : + 49 1778750202

Email Address : kontakt@prowave.de

<HUB for both Olympic & Paralympic: from Tokyo>

GERMANY

KASSEL (@ PROWAVE warehouse):

Jahnstrasse 56

34123 Kassel -GERMANY

Telephone number : + 49 1778750202

Email Address : kontakt@prowave.de

4. DELIVERY WINDOWS & BUMP OUTS

4-1 Delivery Windows for Freight Support Plan

Tokyo 2020 and ICF have agreed on the following HUB in accordance with the 2020 competition calendar and the time required to ship the boats to Tokyo.

Designated HUB	Wave	Delivery Window to the HUB	Estimated Venue Arrival Date
Szeged (Hungary)	Olympic/Paralympic	15 th - 16 th May, 2021	14 th July, 2021
Duisburg (Germany)	Paralympic	3 rd – 6 th June, 2021	10 th August, 2021

<Important>:

Please note that the arrival schedule is subject to change due to the inclement weather or other elements.

4-2 Bump out Day for Freight Support Plan

Bump out day at the Competition Venue (after competition)	
Bump out day for Olympic	9 th August, 2021
Bump out day for Paralympic	6 th September, 2021

Please make sure to pass all the boats and equipment to the Tokyo 2020 logistics partner (=Prowave) before the Bump out day.

4-3 Delivery Windows for NOC/NPC containers 'outside the Freight Support Plan'

NOCs/NPCs approved to bring their own containers and not applying for the Freight Support Plan, please choose the delivery windows as shown below to deliver containers at the competition venue. Tokyo 2020 will provide crane service for these window dates.

Note: NOCs/NPCs must send the Booking Request form to Tokyo 2020 for their own container as well. (=TOCOG must check in prior if the containers are eligible to stay inside the venue.)

Delivery Windows to Competition Venue (=Containers outside Freight Support Plan)		
Bump in Days for Olympic	Day 1	14 th July, 2021
	Day 2	29 th July, 2021
Bump in period for Paralympic	Day 1	10 th August, 2021
	Day 2	29 th August, 2021

4-4 Bump out Day for NOC/NPC containers outside the Freight Support Plan

Bump Out Day at the Competition Venue (after competition) (=Container outside Freight Support Plan)		
Bump out Days for Olympic	Day 1	9 th August, 2021
Bump out Day for Paralympic	Day 1	6 th September, 2021

5. EQUIPMENT

5-1 EQUIPMENT ELIGIBLE UNDER THE FREIGHT SUPPORT PLAN

Tokyo 2020 will only transport the boats and sport-specific equipment necessary for competition at the Tokyo Olympic and Paralympic Games.

List of Eligible Equipment Under Freight Support Plan	
Boats	Other items
• Boats (Only qualified boats or	• Paddle • Trestles

boats entering the competition)	<ul style="list-style-type: none"> • Boat covers • Seats • Life jackets • Footrests and pull bars • Rudders • Knee pad support • Ama (outrigger pontoon) • Double iato (spreaders)
---------------------------------	--

5-2. Training Boats and other Equipment

Transportation for training boats, spare boats and other equipment must be arranged by NOCs/NPCs.

List of Equipment Not Eligible Under Freight Support Plan	
Boats	Other items
<ul style="list-style-type: none"> • Spare boats • Training boats • Spare parts and any other items 	<ul style="list-style-type: none"> • Tent • Bicycles • Training equipment • Ice Bath • Trailer • Uniforms and Clothes • Food and beverages • Medicines, vitamins and supplements • Electrical products • Tools

6. NECESSARY PROCEDURES (Step by Step)

6-1. IMPORT to Japan: in case of Freight Support Plan

Step1: Identify all items you will bring to the Tokyo 2020 Games

Please pack appropriate items in accordance with the eligible equipment list.

Step 2: Contact Tokyo 2020

Submit your Booking Request Form and related shipping documents to Tokyo 2020 to allocate space appropriately for export. (NOCs/NPCs must submit Booking Request twice in total.

Deadline of '1st Booking Request Form' is **16th April, 2021** and 'Final Booking Request Form' must be submitted **immediately right after the qualification in Szeged, Hungary**).

The email address is canoesprint_freight@tokyo2020.jp. Tokyo 2020 will determine whether the Booking Request for Freight Support Plan is applicable or not.

Please note :

When submitting the 'Final Booking Request Form', please put kontakt@prowave.de in CC.

Step 3: Response from Tokyo 2020.

Approval of Freight Support Plan will be announced by Tokyo 2020 with attaching confirmed Booking Request.

After receiving confirmed Booking Request from Tokyo 2020, please contact the logistics partner at HUB individually and prepare for the delivery to HUB (see section 3.)

Step 4: Delivery at the HUBS

All containers/packages must be delivered accompanying original documents as instructed by the logistics partner at HUB.

Step 5: Transport to the port and international freight

Tokyo 2020 will coordinate container delivery at the port, international freight and customs clearance at both ends.

Step 6: Container arrival at the venue

Boats will be handed over by logistics partner to NOCs/NPCs. However, please make sure your representative should be present at the venue for opening the container.

6-2. IMPORT to Japan: in case of 'outside Freight Support Plan'

Step 1: Identify all items you will take to the Tokyo 2020 Games

Make sure all items are eligible for inclusion in accordance with the eligible equipment list.

Step 2: Contact Tokyo 2020

Send your Booking Request and shipping documents to Tokyo 2020 by 16th April, 2021 to guarantee space at the competition venue.

E-mail address is canoesprint_freight@tokyo2020.jp .

Tokyo 2020 will determine whether the Booking Request for containers of outside Freight Support Plan is applicable or not.

<Important>: Tokyo 2020 will not offer spaces at the venue if the Booking Request is sent after 16th April, 2021 by NOCs/NPCs. Please be sure to meet the deadline.

Step 3: Response from Tokyo 2020

Approval of containers outside Freight Support Plan will be announced by Tokyo 2020 with attaching confirmed booking request as soon as confirmed.

6-3. RE-EXPORT: in case of Freight Support Plan

Step 1: After competition

After the competition, the Bump out period is very tight. Therefore, please keep in close contact with the Tokyo 2020 designated logistics partner and freight forwarder of the teams to prepare for the shipping accordingly.

Step 2: Locate your container

Every container will have an identification to describe the destination.
Contact the Tokyo 2020 designated logistics partner at the venue in order to identify the correct container and reaffirm the items that will be returning.
Hand over boats, equipment to Prowave for packing.

Step 3: Closing the container

Once the container is loaded for return, logistics partner will close the container with a container seal.

Step 4: Delivering at the port and customs clearance

Tokyo 2020 will deliver all containers to the port and perform the customs clearance process.

Step 5: International freight

International freight back to origin HUB will be at Tokyo 2020's expense.
For different destinations, NOCs/NPCs have to arrange the transportation by themselves. The cost must be covered by NOCs/NPCs as well.
In case NOCs/NPCs need support for international transportation to different destinations, Yamato is also able to support upon request.

Step 6: Arriving at the destination

Tokyo 2020 will arrange customs clearance and domestic transportation up to HUB. Each NOC/NPC must arrange pick-ups for their boats and equipment at their own expense.
Please contact Tokyo 2020 designated logistics partner at the HUB for adjusting the pick-up schedule.

6-4. RE-EXPORT: in case outside Freight Support Plan

Step 1: After competition

After both Olympic and Paralympic competition, there will be only one (1) and a half day for Bump out. Hence, please keep in close contact with Yamato which operates crange service and team's own freight forwarder who will arrange inland transportation to the port. Please make sure to have your container booked with the vessel operator so that the container can be moved out on the Bump out day smoothly.

Please note: Even if the container is not booked with the vessel operator properly, NOCs/NPCs must move their containers out of the competition venue on the Bump out day. NOCs/NPCs will be charged for the unexpected costs caused by forced container relocation from competition venue if occurred. (please refer to Yamato for more details)

Step 2: Stuff your container

- A) When using COC (=Carrier own container), NOC/NPC's freight forwarder arrange a **Round-Use-Contract** with shipping line to store COC at competition venue during Olympic or/and Paralympic competition. For smooth operation, NOCs/NPCs must stuff the containers in time and arrange inland transportation to the port. Please contact Yamato or team's own freight forwarder to inform the arrival time of the inland transportation.
- B) When using SOC (=Shipper own container), NOC/NPC must stuff the container in time and arrange inland transportation to the port.

Step 3: Close container



Once the container is loaded for return, NOCs/NPCs must close the container with a container seal by themselves. (Please check with you Freight Forwarder how to obtain the seal.)

Step 4: Delivering at the port and customs clearance



NOCs/NPCs must deliver all containers to the port and perform customs clearance process.

7. BOOKING REQUEST FORM TEMPLATE

(Form A)

Booking Request for Freight Support Plan & Containers Outside Freight Support Plan (1st Booking for FSP / Final Booking for 'outside FSP containers' / Final Booking for Carry out&in operation)												 		A
Tokyo 2020 - Canoe Sprint														
A) General Information														
NOC / NPC	NOC / NPC Name :													
	Address :													
	Representative :													
	Email Address :													
Do you wish to use the Freight Support Plan ?														
* If chosen 'NO', please go to section D) for 'Outside Freight Support Plan'														
B) Freight Support Plan (submit by 16th April)														
Please choose which route to use Freight Support Plan for boats														
*In case return route changes after submission of booking request, please notify the boat builder and Tokyo 2020 immediately.														
Choose Route :														
Choose Delivery Window at the Venue (SFW):														
C) Equipment Details (for FREIGHT SUPPORT PLAN)														
only Eligible Boats and Eligible Equipment (please write quantity)														
Eligible Boats and Equipment (submit by 16th April)														
for 1st Booking Request only Boat (Eligible as of 16th April)	Man	KL1	KL2	KL3	KL4	C1	C2	KL1	KL2	KL3	VL2	VL3		
	Woman													
for 1st Booking Request only Other eligible items	Paddle	Footrests and pull bars						<Note>						
	Trestles	Rudders						*Transportation for training boats, spare boats and other equipment must be arranged by NOCs/NPCs.						
	Boat covers	Knee pad support												
	Seats	Ama (outrigger pontoon)												
	Life jackets	Double iato (spreaders)												
only Estimate Boats and Equipment (please write quantity)														
Estimate Boats and Equipment (submit by 16th April)														
for 1st Booking Request only Boat (Estimate as of 16th April)	Man	KL1	KL2	KL3	KL4	C1	C2	KL1	KL2	KL3	VL2	VL3		
	Woman													
for 1st Booking Request only Other estimate items	Paddle	Footrests and pull bars						<Note>						
	Trestles	Rudders						*Transportation for training boats, spare boats and other equipment must be arranged by NOCs/NPCs.						
	Boat covers	Knee pad support												
	Seats	Ama (outrigger pontoon)												
	Life jackets	Double iato (spreaders)												
D) Container Details (for Outside Freight Support Plan) (submit by 16th April)														
* In order to bring boats and equipment from the pre-games training camp, trailers are recommended due to the limitation of the space and the capacity of handling.														
Port of loading :														
No.	Size	Container Number	Container Type Shipper's Own Container (SOC) or Carrier's Own Container (COC)					Choose Delivery Window at the Venue (SFW)						
Container 1														
Container 2														
Container 3														
Shared container for Olympic and Paralympic ?														
E) Carry-out/Carry-in from/to the venue for Pre-Games Training Camp (submit by 16th April)														
Are you planning to Carry-out/Carry-in the boats from/to the venue for Pre-Games Training Camp?														
If chosen "YES"	Training Camp location:													
	Representative at pre-camp:													
	Who is the contact for carry-out/in operation at the Venue?													
	Name:													
	Contact (e-mail):													
	Carry-out date:													
	Date:													
	Carry-in date:													
	Date:													
	The date you prefer to start practice at the practice venue:													
If chosen "NO"	Quantity of boats you Carry-in:													
	Will you Carry-in the boats other than FSP boats? (Necessary to prepare for rack allocation)													
	When is your plan to start training at the training venue? :													
F) Remarks														
<p><Important></p> <p>Please note that the arrival schedule is subject to change due to the inclement weather or other elements.</p> <p><What to do></p> <p>1. Complete all required fields on this form</p> <p>2. Submit* this form to canoesprint_freight@tokyo2020.jp</p> <p>Submission Deadline</p> <p>* Deadline for Freight Support Plan (1st Booking Request) = 16th April, 2021</p> <p>* Deadline for non-Freight Support Plan containers (Final Booking) = 16th April, 2021</p> <p>* Deadline for E) Pre-camp information (Final Booking)= 16th April, 2021(all NOCs/NPCs must submit)</p> <p>Please note NOCs/NPCs that apply for FSP need to submit Booking Request Forms twice (form A&B) to Tokyo 2020.</p>														
Please type <input type="text"/> areas.												Please select <input type="text"/> areas.		
Tokyo 2020 confirmation														

(Form B)

Booking Request for Freight Support Plan & Containers Outside Freight Support Plan (Final Booking Request for FSP)												 		B
Tokyo 2020 - Canoe Sprint														
A) General Information														
NOC / NPC	NOC / NPC Name :													
	Address :													
	Representative :													
	Email Address :													
Do you wish to use the Freight Support Plan ?														
B) Freight Support Plan														
Please choose which route to use Freight Support Plan for boats <i>*In case return route changes after submission of booking request, please notify Prowave and Tokyo 2020 immediately.</i>														
Choose Route :														
Choose Delivery Window at the Venue (SFW):														
C) Equipment Details (for FREIGHT SUPPORT PLAN)														
only Qualified Boats and Equipment (please write quantity) for Final Booking Request (submit immediately right after the qualification at Szeged, Hungary)														
for Final Booking Request only Boat (Confirmed Qualified boats only)		K1	K2	K4	C1	C2	KL1	KL2	KL3	VL2	VL3			
	Men													
	Women													
for Final-Booking Request only Other eligible items	Paddle			Footrests and pull bars				<Note> *Transportation for training boats, spare boats and other equipment must be arranged by NOCs/NPCs.						
	Trestles			Rudders										
	Boat covers			Knee pad support										
	Seats			Ama (outrigger pontoon)										
	Life jackets			Double iato (spreaders)										
Remarks														
<Important> Please note that the arrival schedule is subject to change due to the inclement weather or other elements.														
<What to do> 1. Complete all required fields on this form 2. Submit* this form to 1. canoesprint_freight@tokyo2020.jp 2. kontakt@prowave.de Submission Deadline * Deadline for Freight Support Plan (Final Booking Request) = Immediately right after qualification in Szeged, Hungary														
Please type <input type="text"/> areas. Please select <input type="text"/> areas.														
Tokyo 2020 confirmation														
Please note NOCs/NPCs that apply for FSP need to submit the Booking Request Forms twice (form A&B) to Tokyo 2020.														

8. ITEM LIST TEMPLATE (if apply for Freight Support Plan)

<Canoe Sprint>		<u>*please submit this item list along with the Booking Request Form</u>					
<u>List of items to ship using Freight Support Plan</u>							
1st Booking Request or Final Booking Request:							
<u>Name of Delegation(NOC/NPC):</u>							
Hand over Date to Prowave (Year) / (Month) / (Date):							
<u>HUB to use (Szeged, Hungary / Duisburg, Germany) :</u>							
Detail							
No.	Item	Quantity	Unit Value (EUR)	Total Value (EUR)	Unit Weight (KG)	Total Weight (KG)	Remarks
1							
2							
3							
4							
5							
6							
7							
8							
9							
10							
11							
12							
13							
14							
15							
16							
17							
18							
19							
20							
							For Tokyo 2020 Use Only :

(Revised Mar.30)

9. ATTENTION

All NOCs/NPCs are required to pay attention to trucks and cranes in operation within the container sites. Please check the following caution notes carefully. Restricted areas will be set up while cranes are operating. Every person needs to follow the operator's safety instructions and avoid the interruption of the operation.

9.1 Crane Vehicle

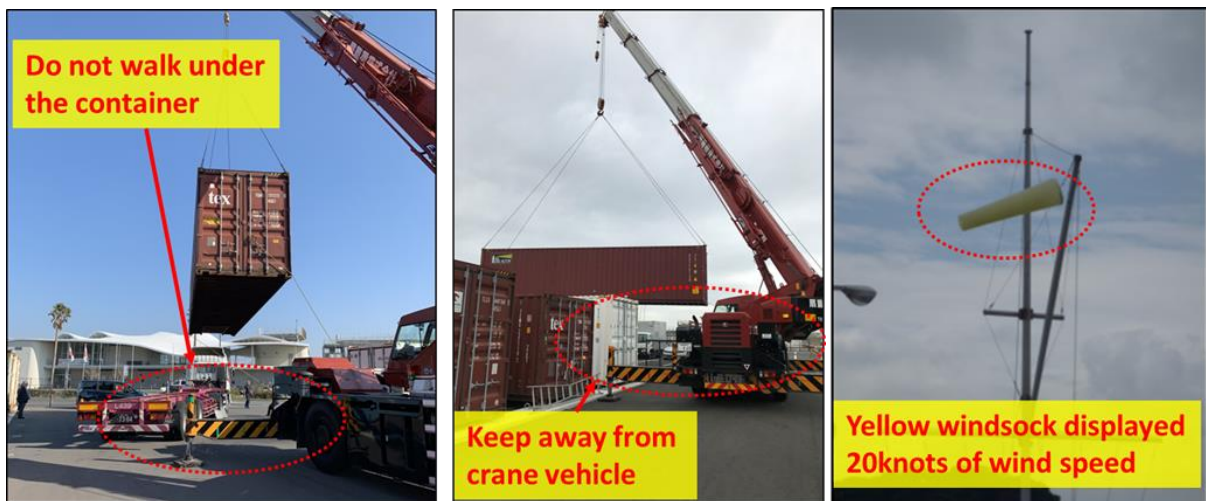
- A) Keep away from crane vehicle.
- B) Do not walk inside the outriggers of cranes.
- C) Do not walk under the container.
- D) Do not disturb the crane operator.

9.2 Truck

- A) Do not run in front of trucks.
- B) Do not leave boats and equipment in access ways to avoid the obstructions.

9.3 Other Notes

- A) Only authorized vehicles are able to access into the competition venue.
- B) Please dispose of garbage into the trash cans provided.
- C) In case the maximum wind speed exceeds 20 knots (10 meters), Tokyo 2020 might decide to suspend or postpone the crane operations.



9.4 Request for Cooperation for Fire Ants Habitats

To prevent the infestation of fire ants in Japan, Tokyo 2020 request NOCs/NPCs a maximum support and cooperation to implement the control measures on containers and cargo originating in or transiting through fire ant habitants (e.g. China, Taiwan, and the United States).

Please visit the Ministry of the Environment's website for more information on the IAS (Invasive Alien Species) ACT.

The invasive Alien Species Act: <http://www.env.go.jp/en/nature/as.html>

10. CONTACTS

- Submitting Booking Request Form (for 'Freight Support Plan', 'outside Freight Support Plan' and 'Carry out/in from/to the venue operation'): canoesprint_freight@tokyo2020.jp
- For Customs related inquiries: customs@tokyo2020.jp
- Tokyo 2020 Official Customs Broker (Yamato Global Logistics Japan):
canoe.yamato@y-logi.com
- Tokyo 2020 designated logistics partner (Prowave): kontakt@prowave.de